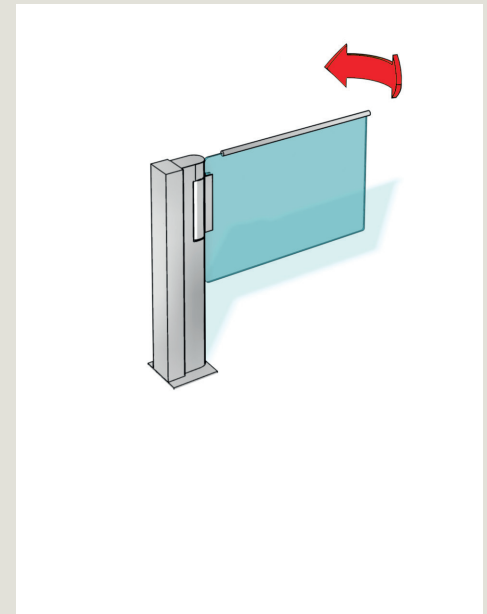


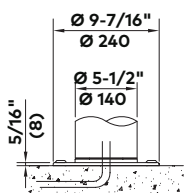
# HSD-L06

## Half-height swing doors

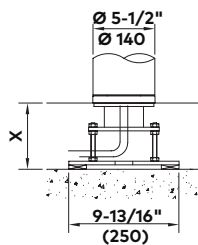
Standard units	HSD-L06
Construction	
Tubular column	Half column [W = 5-1/8" (130)/D = 3-9/16" (90)] as drive housing made of AISI 304 stainless steel.
Barrier element	Transparent polycarbonate door leaf with horizontal aluminum hand rail painted in RAL 9006.
Leaf radius	35-7/16" (900)
Leaf upper edge	35-7/16" (900)
Finish	Stainless steel satin finish.
Function	Type 2: Power-assisted motion, servo-positioning drive/electrically controlled in 2 directions. 90° opening in entrance and exit directions.
Electrical equipment	Control unit and power supply unit integrated into the housing.
Power supply	100–240 VAC 50/60 Hz.
Installation	Wall mounting/dowelled. Not suitable for outdoor installation.



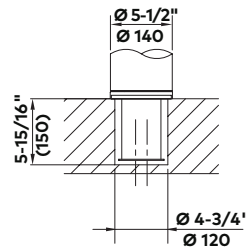
### Installation alternatives



**Dowelled on finished floor (standard)**



**With mounting plate on subfloor level**

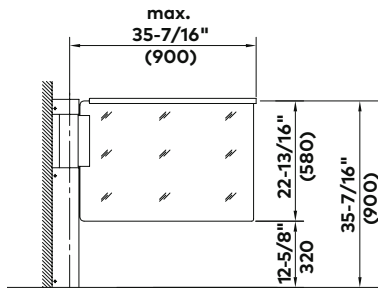


**Cast-in in finished floor level**

#### Note

Dimensions shown as inches followed by millimeters; for example, 1" (25).

## Elevation drawing



HSD-L06

## HSD-L06 options

### Construction

Special leaf width: minimum 25-9/16" (650).

### Function

Master for linking two units as a double swing door.

### Electrical equipment

Operating panels and frames or surface mount housing.