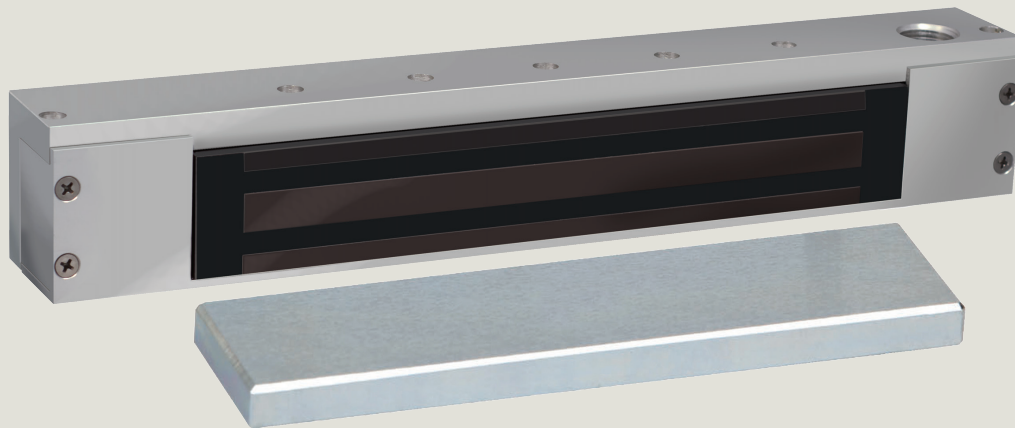


# RCI 171HD Magnetic Lock

## Designed for hazardous locations

For single out-swinging doors,  
push side mount



## List Pricing (CAD)

### Features

- Low projections from header. This will accommodate most door conditions without the need for filler plate or special bracket.
- Low energy consumption; 0.26 amp @ 24VDC 0.50 amp @ 12VDC. 24VDC furnished as standard voltage. 12VDC available upon request.
- 1200 lbs. holding force.
- Door position switch (DPS) standard feature.
- Built-in surge protection.
- Easy installation and maintenance.
- No pins, latches or moving parts to avoid failure that could impede safe egress in an emergency situation.
- Satin anodized aluminum finish.
- Hazardous Locations Door Holders:
  - Category – FDGF. Class I, Division 2 compliant.
  - Tested to UL228 - door closers-holders with/without integral smoke detectors.
  - File Number – E146590.
- Releasing Devices:
  - Category – SZNT.
  - Tested to ANSI/UL864 - control units and accessories for fire alarm systems.
  - File Number – S5020.

Model	Price (CAD)
171HD	\$2,550.00
For single out-swinging doors, push side mount.	
ZB171HD	\$2,725.00
For single in-swinging doors, pull side mount. Includes "Z" bracket inswing assembly kit. Specify voltage when ordering.	

Accessories	Price (CAD)
RCI AB179NR-258 1/2"H x 2-5/8"W x 14"L single angle bracket with no reveal.	\$360.00
RCI AB179R-118-158 1"H x 1"W x 14"L single angle bracket with 1/8" to 1-5/8" reveal.	\$170.00
RCI AB179R-58-1 1-1/2"H x 2"W x 14"L single angle bracket. with 5/8" to 1" reveal.	\$225.00
RCI FP178-12 1/2"H x 1-1/4"W x 14"L single filler plate.	\$150.00
RCI FP178-58 5/8"H x 1-1/4"W x 14"L single filler plate.	\$150.00

**Product Changes** — dormakaba Canada Inc. reserves the right to discontinue models and/or make changes at anytime in materials, parts, components, specification, etc., without notice and without incurring any obligations on models built prior to the change.

**Prices** — Orders are accepted with the understanding that they will be billed at prices in effect at the time of shipment, except when firm prices have been quoted. Prices are subject to change without notice.

© dormakaba 2018 Information on this sheet is intended for general use only. dormakaba reserves the right to alter designs and specifications without notice or obligation. Printed in Canada.

dormakaba Canada Inc.  
65 Struck Court  
Cambridge, Ontario  
Canada N1R 8L2  
1-800-265-6630  
sales\_RCI@dormakaba.com  
dormakaba.us

ZP171HDCAD-1018