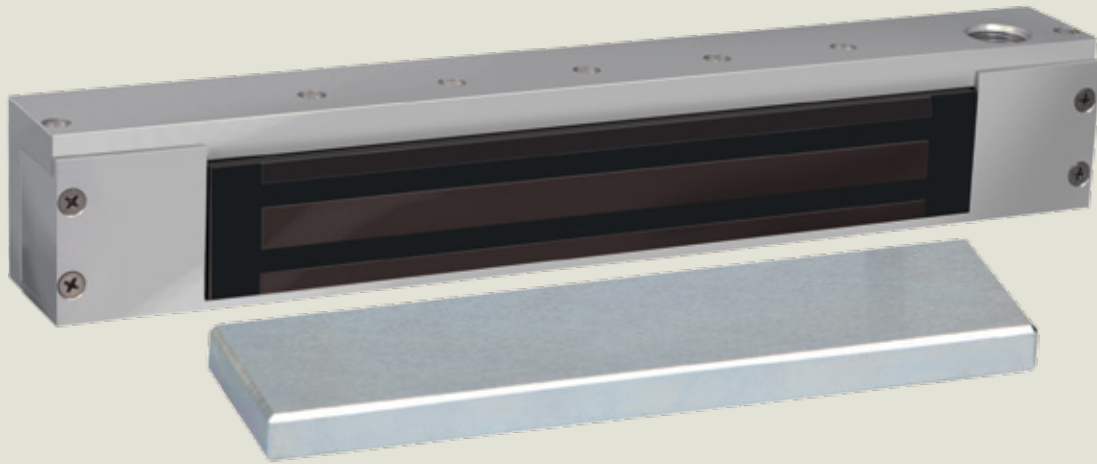


RCI 171HD Magnetic Lock

Designed for hazardous locations.
For single out-swinging doors,
push side mount



Specifically designed for hazardous locations, the RCI 171HD magnetic lock is a UL/ULC Listed magnetic lock that meets the requirements for Class I, Division 2 applications. The 171HD offers continuous monitoring capability for open/close status or attempted unauthorized entry. The fail-safe magnets offer the ability to securely lock fire exit doors, while also powering down when signaled to do so by an appropriate door control unit. Designed for easy installation and maintenance, the 171HD will accommodate most doors and frame conditions without requiring a filler plate or a special bracket.

Also available

RCI ZB171HD for single in-swinging doors, pull side mount.

Includes "Z" bracket inswing assembly kit.

Accessories

RCI AB179NR-258	1/2"H x 2-5/8"W x 14"L single angle bracket. with no reveal.
RCI AB179R-118-158	1"H x 1"W x 14"L single angle bracket. with -1/8" to 1-5/8" reveal.
RCI AB179R-58-1	1-1/2"H x 2"W x 14"L single angle bracket. with 5/8" to 1" reveal.
RCI FP178-12	1/2"H x 1-1/4"W x 14"L single filler plate.
RCI FP178-58	5/8"H x 1-1/4"W x 14"L single filler plate.

Features

- Low projections from header. This will accommodate most door conditions without the need for filler plate or special bracket.
- Low energy consumption; 0.26 amp @ 24VDC
0.50 amp @ 12VDC. 24VDC furnished as standard voltage. 12VDC available upon request.
- 1200 lbs. holding force.
- Door position switch (DPS) standard feature.
- Built-in surge protection.
- Easy installation and maintenance.
- No pins, latches or moving parts to avoid failure that could impede safe egress in an emergency situation.
- Satin anodized aluminum finish.
- Hazardous Locations Door Holders:
 - Category – FDGF. Class I, Division 2 compliant.
 - Tested to UL228 - door closers-holders with/without integral smoke detectors.
 - File Number – E146590.
- Releasing Devices:
 - Category – SZNT.
 - Tested to ANSI/UL864 - control units and accessories for fire alarm systems.
 - File Number – S5020.

Specifications

14"W x 1-3/4"H x 2"D (355mm x 45mm x 51mm)

Armature Plate: 10-3/4"W x 1-3/4"H x 5/8"D (273mm x 45mm x 16mm)

Magnetic Lock Mounting to Frame Figure 1

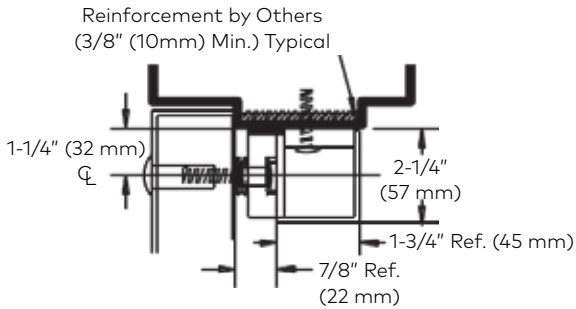


Figure 1A
Standard Installation

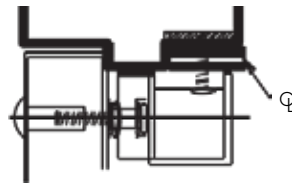


Figure 1B
With Series 178 Filler Plate

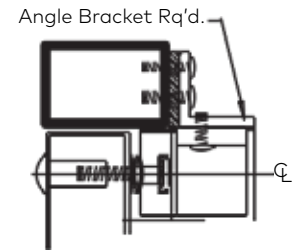


Figure 1C
With 179 Series Angle Bracket

Armature Mounting to Door(s) Figure 2

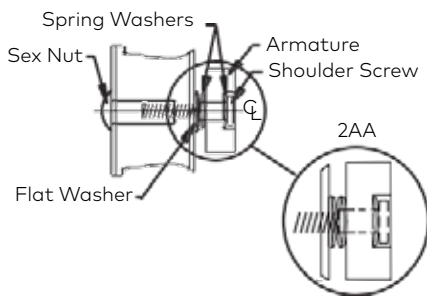


Figure 2A
Hollow Metal Door

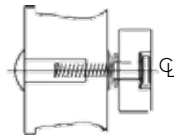


Figure 2B Wood Door

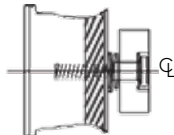


Figure 2C Reinforced Door

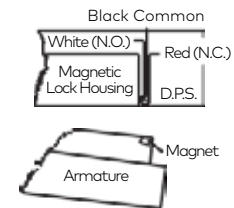


Figure 3

Wiring for D.P.S. (Door Position Switch).
Drawing Shows Door in Open Position

Electrical Specifications

Current Draw	0.50 AMPS @12VDC 0.26 AMPS @ 24VDC
Wire Color Code	Orange/Orange (12VDC) Red/Red (24VDC)
Holding Force	1200 LB (544 KG)

© dormakaba 2022 Information on this sheet is intended for general use only. dormakaba reserves the right to alter designs and specifications without notice or obligation.