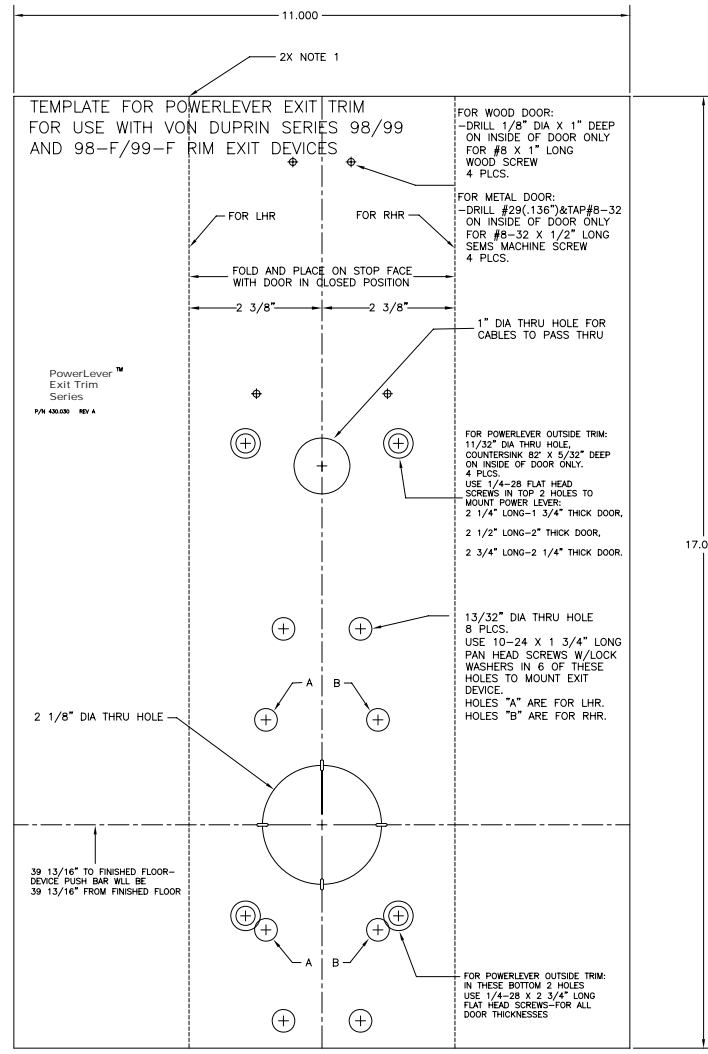


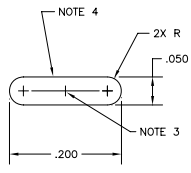
LIMITED RIGHTS IN DATA
 THIS DOCUMENT CONTAINS PROPRIETARY AND TRADE
 SECRET DATA OF THE MILITARY GROUP.
 IT IS NOT TO BE USED, REPRODUCED OR RELEASED IN
 WHOLE OR IN PART FOR ANY PURPOSE OTHER THAN
 THAT AUTHORIZED BY THE MILITARY GROUP.
 AUTHORIZATION MUST BE IN WRITING.

REV.	ECO #	REV. BY	CHKD BY	DATE
A	0763			01SEP00
B	0784	KCS	JEP	23FEB01

- NOTES
- 1) PERFORATE ALONG DASHED LINE TO AID FOLDING, APPROXIMATELY 10 PERFORATIONS PER INCH. PERFORATIONS TO BE WITHIN .005 OF PRINTED DASHED LINE.
 - 2) BLACK INK ON WHITE PAPER
 - 3) TO BE CENTERED ON 2 1/8" DIA AT THE 4 POINTS ON CIRCUMFERENCE AS SHOWN
 - 4) PERIMETER TO BE PERFORATED SO CAN PUNCH OUT
 - 5) TOLERANCES TO BE ±.005 UNLESS OTHERWISE SPECIFIED
 - 6) ALL TEXT AND DIMENSIONS SHOWN WITHIN THE 11 X 17 OUTLINE IS TO BE PRINTED



REFERENCE ONLY, NOT TO SCALE
DO NOT USE AS A DRILLING TEMPLATE
CALL 800-849-8324



REF. ASME Y14.5M-1994

MAB-HARRINGTON		805-D NEWTON CIRCLE	
LEXINGTON, KY 40511-1240		LEXINGTON, KY 40511-1240	
PHONE 606-855-6744		PHONE 606-855-6744	
TITLE	TEMPLATE, PL EXIT TRIM, VD 98/99	DR.	JEP
MATERIAL	70 LB WHITE PAPER	CHK.	KCS
SCALE	1:1	APP.	
SHEET	1 OF 1	SIZE	4.30.030
		REV.	B

PowerLever Exit Trim Series—For use with Von Duprin Series 98/99 & 98-F/99-F Rim Exit Devices

INSTALLATION NOTICE: Outside Back Plate Assembly (416000) Excess Stud Removal

Refer to the illustration figure 5, on page 8 of the PowerLever Installation Guide:

-Attached to the PowerLever Outside Cover Assembly is the Outside Back Plate Assembly, which has attached to it 8 internally threaded studs used to mount the Exit Device to the PowerLever. Although 8 studs are depicted and existing, only 6 studs are actually required for any given installation. The purpose of using 8 studs is to accommodate either a LHRB or a RHRB mounting scenario. All installation procedures will remain the same except as noted in the “Special Time Saving Consideration” statement below.

SPECIAL TIME SAVING CONSIDERATION (Modification of Back Plate Assembly):

The Design of the Outside Back Plate Assembly is such that it will accommodate both a RHRB and/or a LHRB installation. If elected, a shortcut is possible by removing the Back Plate Assembly from the back of the Outside Cover (held on by Qty. 3 #6-32 screws), then knocking out the 2 studs that will not be used for the given installation. The Back Plate Assembly is then re-installed to the Outside Cover with the 3 #6-32 screws. Use caution not to pinch the system cable or the solenoid lead wire. However, special consideration is required. Once the studs are knocked out, it will be impossible to use the Back Plate for the opposite handed installation. A hammer is required to knock out the studs which are press fitted to the plate. This will reduce the number of holes required to be drilled into the door, thus saving time.

Warranty Exception-Election of stud removal, as stated above, ***will not*** void the Mas-Hamilton Group, Inc. PowerLever Lock Series Limited Product Warranty

Reference:
RHRB – Right Hand Reverse Bevel
LHRB – Left Hand Reverse Bevel

P/N 467.041 Rev. A – 11APR01

