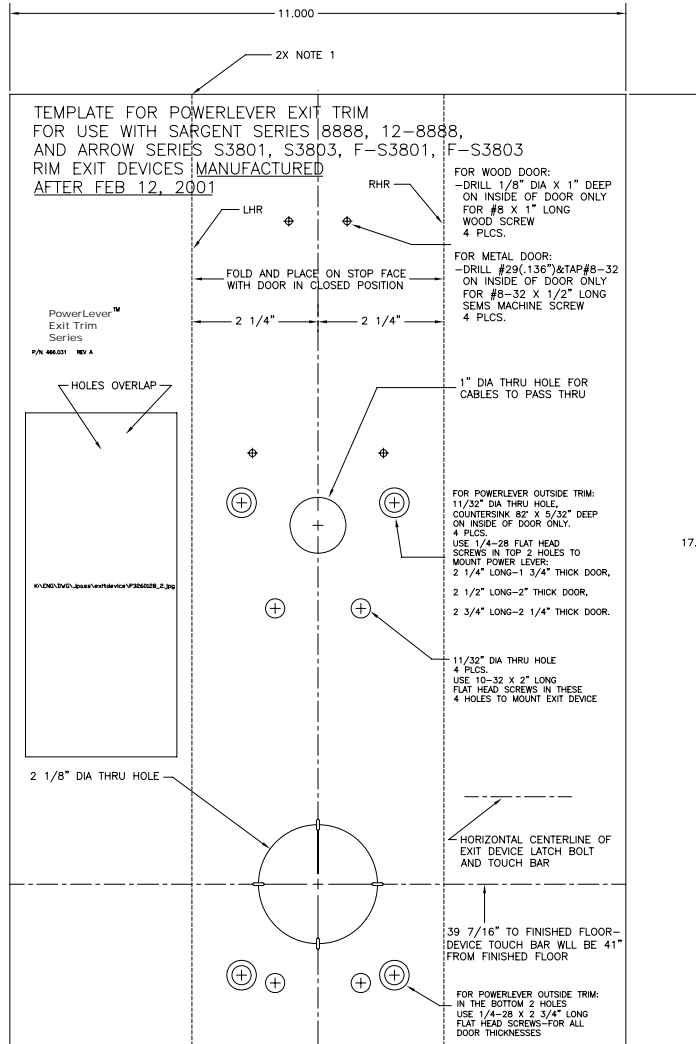


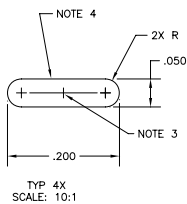
LIMITED RIGHTS IN DATA
 THIS DOCUMENT CONTAINS PROPRIETARY AND TRADE
 SECRET DATA OF THE MILITARY GROUP.
 IT IS NOT TO BE USED, REPRODUCED OR RELEASED IN
 WHOLE OR IN PART FOR ANY PURPOSE OTHER THAN
 THAT AUTHORIZED BY THE MILITARY GROUP.
 AUTHORIZATION MUST BE IN WRITING.

REV.	ECD #	REV. BY	CHKD BY	DATE
A	0791			08AUG01



- NOTES
- 1) PERFORATE ALONG DASHED LINE TO AID FOLDING, APPROXIMATELY 10 PERFORATIONS PER INCH. PERFORATIONS TO BE WITHIN .005 OF PRINTED DASHED LINE.
 - 2) BLACK INK ON WHITE PAPER
 - 3) TO BE CENTERED ON 2 1/8" DIA AT THE 4 POINTS ON CIRCUMFERENCE AS SHOWN
 - 4) PERIMETER TO BE PERFORATED SO CAN PUNCH OUT
 - 5) TOLERANCES TO BE ±.005 UNLESS OTHERWISE SPECIFIED
 - 6) ALL TEXT AND DIMENSIONS SHOWN WITHIN THE 11 X 17 OUTLINE IS TO BE PRINTED
 - 7) PICTURE WITH HALF TONES, APPROX 3 X 6, TO BE PRINTED IN THE AREA SHOWN

REFERENCE ONLY, NOT TO SCALE
DO NOT USE AS A DRILLING TEMPLATE
CALL 800-849-8324



REF. ASME Y14.5M-1994

M.A.B. HAZEN TICON		749 W. SHORT ST. LEWISTON, NY 40508 PHONE 608-350-4744	
TITLE	TEMPLATE PL EXIT TRIM	DR.	JEP 03APR01
MATERIAL	SARGENT 8888, NEW STYLE	CHK.	JEP 03APR01
SCALE	70 LB WHITE PAPER	APP.	JEP 03APR01
1:1	SHEET 1 OF 1	SIZE	466.031 A