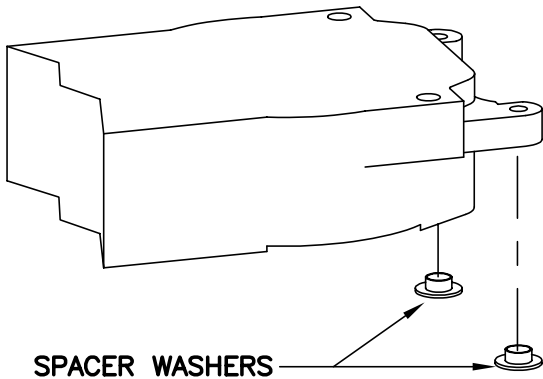


INSTALLATION INSTRUCTIONS

RTS 88 X 8820J CONVERSION BRACKET
FOR REPLACEMENT OF EXISTING OVERHEAD CONCEALED
CLOSER WITH DORMA RTS 88.

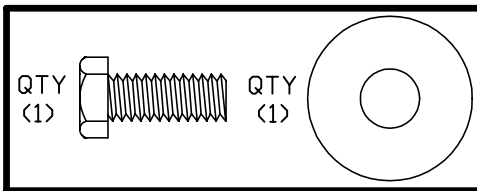
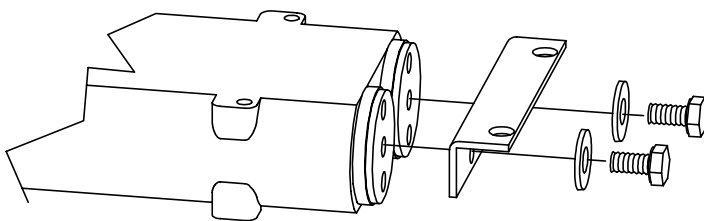


1 Remove spacer washers from closer body.



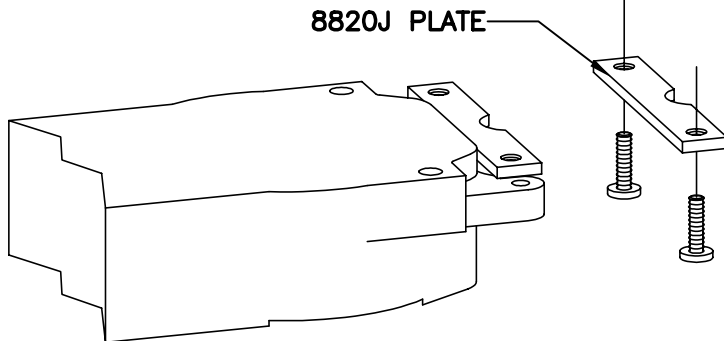
2 Attach angle bracket to closer body with 2 hex head 1/4-20 machine screws and flat washer.

NOTE: ANGLE BRACKET AS SUPPLIED BY DORMA MUST BE USED!

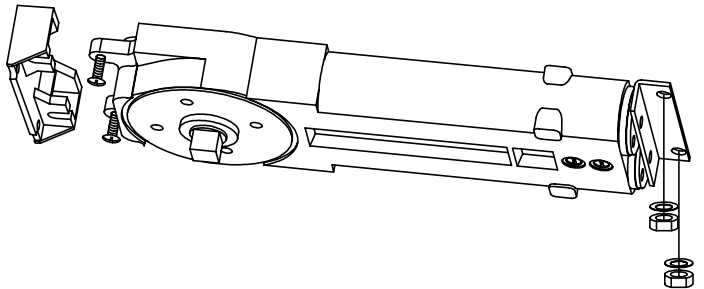
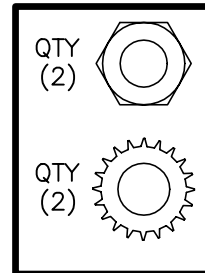
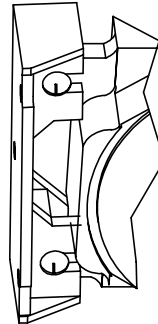


3 Install two pan head 1/4-20 screws into 8820J. make approximately 2 turns. Place bracket, with screws, on end of closer as shown.

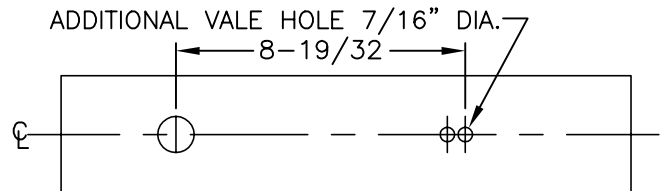
NOTE: NOTCH IN BRACKET SHOULD FACE SIDE JAMB.



4 Install closer with brackets into header by inserting mounting tabs into corner bracket. Then place end of closer with angle bracket over existing studs in header. Fasten with two 1/4-20 nuts and lock washers. Tighten two 1/4-20 pan head screws security.



5 Prepare cover plate for installation by drilling additional valve access hole as required. Install cover plate.



6 Check the condition of the arm in the top of the door. If there are any signs of wear in the spindle area, replace the arm.

7 Install door in normal manner.

Adjust closing speeds as follows:

Valve "A" - Controls closing speed from maximum opening angle to 0°. Clockwise turns decrease closing speed, counterclockwise turns increase closing speed.

Valve "B" - Increases closing speed from maximum opening angle to 20°, turn valve counterclockwise.

