

# Kaba Axessor® IP safe lock Functional Scope



## Motorized lock

- Patented motorized lock with automatic locking
- Sensor monitored deadbolt and motor
- Definable bolt open time
- Standard footprint
- 2 inputs (one potential 12V, one switch)
- 2 outputs
- Input/output polarity invertible
- 10,000 Audit Events
- External power supply optional

## Input unit

- High quality, robust metal input unit with USB interface
- High contrast LCD display
- 10 display languages (EN, FR, DE, NL, IT, ES, HU, PT, PL, TR)
- Battery operated (3 AA) Software

## eBox network module

- AES-256 data encryption
- 5 contact-controlled inputs
- 5 potential-free outputs
- Input/output polarity invertible
- Power supply 9 to 24 VDC
- LAN port 1 x 10/100 Mbps (RJ45)

## Software

- AS280-INSW installation software
- ASx83-SDK:
  - Software development package
  - Enables custom application
- AS284-NETW programming software:
  - Supports USB and LAN/WAN
  - Grouping and batch function
  - Audit reading
- Network and access security dongle and password protected
- Windows operating systems (32/64 bit) XP SP3 and latest versions

## Code functions

- 4 hierarchy levels: 1 master, 4 managers, 36 operators, 1 courier
- Code 45 and 46 can be selected for control of interior compartments
- Code 47 optional time code
- Code 48/49 for lock disabling/enabling
- One shot codes for Group 4
- Dual mode for group / user opening
- Optional dual manager mode for programming
- Individual code / group disabling
- Duress code can be selected, +/- 0..9
- Penalty after four incorrect codes

## Authorizations

- Master/manager can/cannot open lock
- Optional time lock override for master
- Time lock interruption for managers and operators - optional
- Manager cross access for user groups
- Optional time delay override for courier code

## Time functions

- Daylight Savings Time (DLST)
- 35 weekly locking periods
- 22 holiday and annual locking periods
- Immediate time lock [hh:mm]
- 8 time lock interruption periods
- Display of next opening time can be selected
- Remote disabling
- Non-return time delay

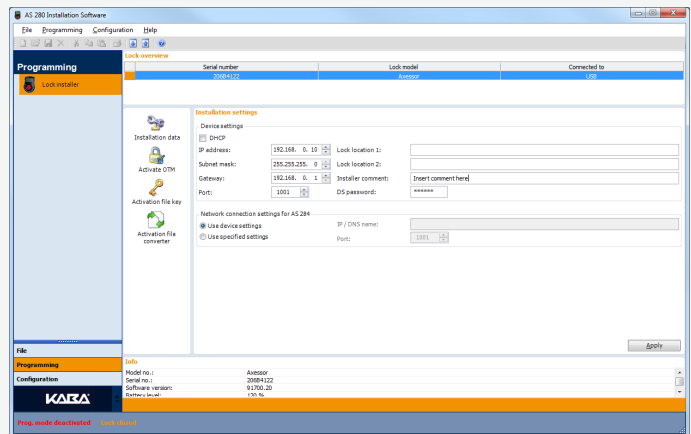
## Opening delay

- Definable Time delay and duress delay by Group/Time related time delay
- Time related dual mode
- Time related code disabling
- Time delay count up, down or off

## Approvals

- EN 1300 B, VdS class 2
- UL type 1
- CNPP a2p pending

# Great flexibility – security of investment



*Like all products of the Axessor series, the network lock Axessor IP features a USB 2.0 port directly on the input unit for connection to the software. Utilizing the eBox and AS284-NETW software any number of locks can be remotely managed and audited.*

*For specific needs, the KSSLP protocol or the SDK function library provides a software developer with very flexible integration into existing environments / systems.*

## Accessories

### External plug-in power supply units

Plug-in power supply unit for standalone operation. Direct connection to an Axessor® lock EU, 100–240 V/50–60 Hz/6 V.

Plug-in power supply unit for network operation. Connection to an eBox (EU, 100–240 V/50–60 Hz/12 V stabilized).

Power Box for standalone operation. Direct connection to an Axessor® lock, 9–24 VDC/6 VDC.

### Connection cable

55/120/200 cm cable lengths available

