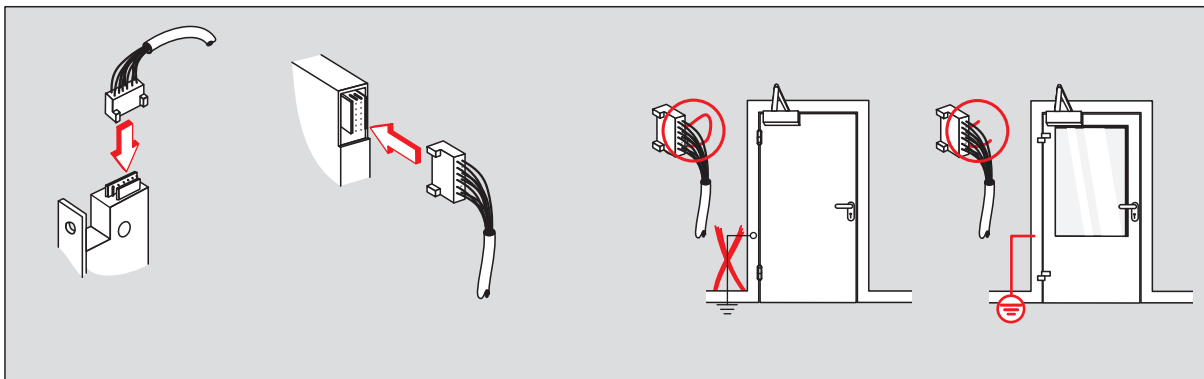


WN 058076-45532, 01/17



SVP-A (D)	Klemme SVP-S2x DCW	SVP 6xxx mit Zylinderkontakt
Kabelfarben	Funktion	
sw = schwarz	23	GND
br = braun	49	"Steuerfalle ein", NC
rs/gr = rosa/grau	43	"SVP entriegelt", NO
rt = rot	X11-	Drücker einkuppeln über GND-Kontakt Arbeitsstrom = NO / Ruhestrom = NC
ws = weiß	X11+	+ 12V DC oder + 24V DC (stabilisiert)
ge = gelb		"SVP entriegelt" und "Steuerfalle ein" und Zylinderkontakt, C
gn = grün		Zylinderkontakt, NO max. 100 mA, max. 30V DC
gr = grau	41	Sabotagelinie
rs = rosa	42	Sabotagelinie
rt/bl = rot/blau	24	"SVP verriegelt", NC
bl = blau	26	"Drücker betätigt", NO
vi = violett	27	"SVP verriegelt" und "Drücker betätigt", C

SVP-A (GB)	terminal SVP-S2x DCW	SVP 6xxx with cylinder contact
cable colours	function	
sw = black	23	GND
br = brown	49	"trip latch on", NC
rs/gr = pink/grey	43	"SVP unlocked", NO
rt = red	X11-	throw-in lever handle by GND contact faile secure = NO / faile save = NC
ws = white	X11+	+ 12V DC or + 24V DC (stabilized )
ge = yellow		"SVP unlocked" and "trip latch on" and cylinder contact, C
gn = green		cylinder contact, NO max. 100 mA, max. 30V DC
gr = grey	41	sabotage line
rs = pink	42	sabotage line
rt/bl = red/blue	24	"SVP locked", NC
bl = blue	26	"lever handle operated", NO
vi = violet	27	"SVP locked" and "lever handle operated", C

SVP-A (F)	borne SVP-S2x DCW	SVP 6xxx avec contact de cylindres
couleurs des câbles	fonction	
sw = noir	23	GND
br = brun	49	"pêne de commande actionné", NC
rs/gr = rosé/gris	43	"SVP déverrouillé", NO
rt = rouge	X11-	embrayer la béquille par GND courant à émission = NO / à rupture = NC
ws = blanc	X11+	+ 12V DC ou + 24V DC (stabilisé)
ge = jaune		"SVP déverrouillé" et "pêne de commande actionné" et contact de cylindres, C
gn = vert		contact de cylindres, NO max. 100 mA, max. 30V DC
gr = gris	41	ligne anti-sabotage
rs = rosé	42	ligne anti-sabotage
rt/bl = rouge/bleu	24	"SVP verrouillé", NC
bl = bleu	26	"poigné actionné", NO
vi = violet	27	"SVP verrouillé" et "poigné actionné", C

SVP-A (I)	morsetto SVP-S2x DCW	SVP 6xxx con contatto del cilindro
colori dei cavi	funzioni	
sw = nero	23	terra
br = marrone	49	"scrocco di comando inserito", NC
rs/gr = rosa/grigio	43	"SVP sbloccato", NO
rt = rosso	X11-	azionare la maniglia (impulso di terra) Corrente di riposo = NO / di lavoro = NC
ws = bianco	X11+	+ 12V DC / + 24V DC (stabilizzato)
ge = giallo		"SVP sbloccato" e "scrocco di comando inserito" e contatto del cilindro, C
gn = verde		contatto del cilindro, NO max. 100 mA, max. 30V DC
gr = grigio	41	linea di sabotaggio
rs = rosa	42	linea di sabotaggio
rt/bl = rosso/blu	24	"SVP bloccato", NC
bl = blu	26	"maniglia azionata", NO
vi = viola	27	"SVP bloccato" e "maniglia azionata", C

SVP-A (NL)	Klemm SVP-S2x DCW	SVP 6xxx med zylindercontact
Kabelkleur	Functie	
sw = zwart	23	GND
br = bruin	49	"stuurschoot in", NC
rs/gr = roze/grijs	43	"SVP ontgrendeld", NO
rt = rood	X11-	Deurkruk aankoppeln via GND-impuls Arbeidsstroom = NO / Ruststroom = NC
ws = wit	X11+	+ 12V DC / + 24V DC (gestabiliseerd )
ge = geel		"SVP ontgrendeld" en "trip latsch on" en zylindercontact, C
gn = groen		zylindercontact, NO max. 100 mA, max. 30V DC
gr = grijs	41	sabotageluis
rs = roze	42	sabotageluis
rt/bl = rood/blauw	24	"SVP vergrendelt", NC
bl = blauw	26	"deurkruk bedient", NO
vi = violet	27	"SVP vergrendelt" en "deurkruk bedient", C

Änderungen vorbehalten  
Subject to change without notice