

Hygiene Touch Solutions

Hands Free Foot Plate - for Patch Fitting Glass Doors

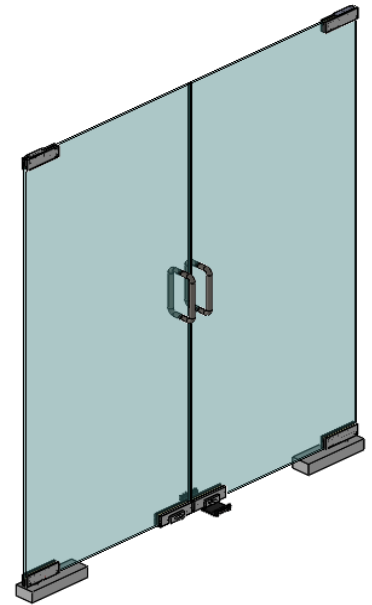


dormakaba offers solutions for patch fitting glass door.

In typical commercial setups and in public places glass door shutters are very common. When using these doors it is impossible to avoid touching the door hardware. Hygiene is of paramount importance and therefore hesitation to touch the door hardware of a glass door is understandable.

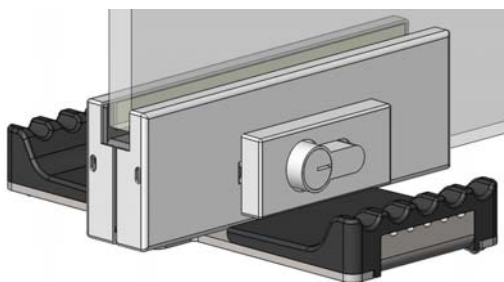
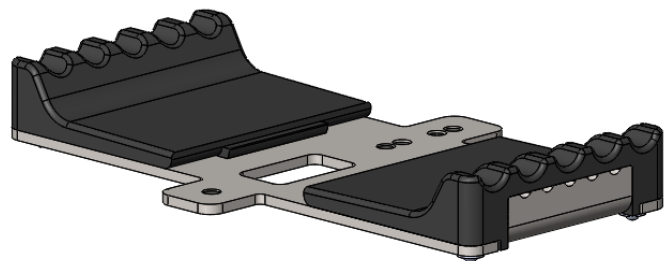
With a dormakaba hands free foot plate specially designed for patch fitting glass doors, operating the door becomes hassle free, convenient and hygienic.

Suitable for patch fitting glass door applications in educational institutions, offices, shopping malls, hospitals etc.



Features

- Touch less access solution for frameless internal glass door
- Sleek & smart retrofit design
- No additional glass cut outs required
- Gripping pad ensures no damage to shoe sole
- Unique plunger ball mechanism ensures load bearing & no slipping of the plates
- Hassle-free installation
- Glass door thickness 10 & 12mm
- Door capacity 80kg
- Material - SS 304 Grade
- Finish - SSS



Article Code : 9133697