

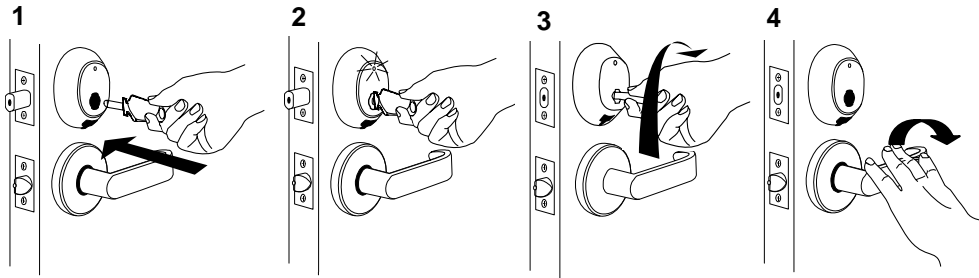


InSync® I

Lock Usage Instructions

Unlocking your door from the outside

1. Fully insert your RFID key into the lock port.
2. Wait until the GREEN light flashes once.
3. Rotate the key as you would a standard mechanical dead bolt.
4. Rotate the lever to open the door.

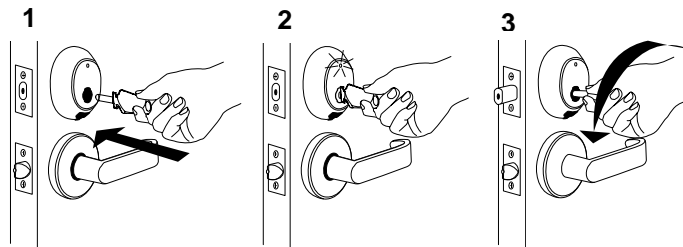


Locking and unlocking your door from the inside

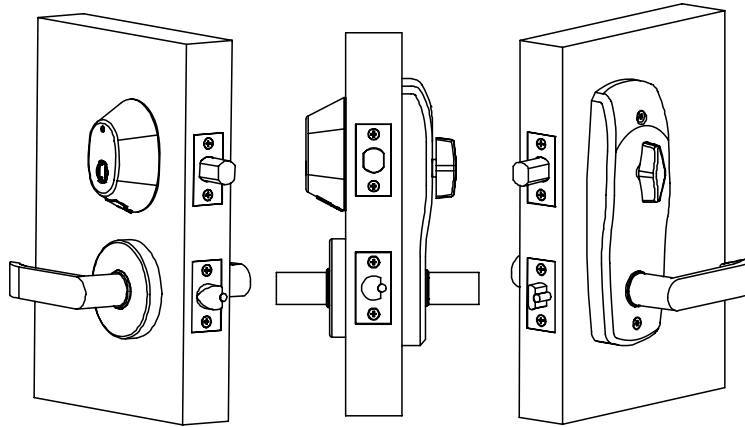
- To lock the door from the inside, rotate the thumb turn to lock the dead bolt.
- To unlock the door from the inside, rotate the inside lever to retract the latch and dead bolt simultaneously. Rotating the outside lever retracts the latch only.

Locking your door from the outside

1. Pull the door shut, then insert your key into the lock port.
2. Wait until the GREEN light flashes once.
3. Rotate the key to extend the dead bolt.



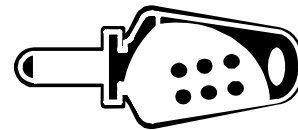
All information contained herein, including but not limited to product pricing and other intellectual property, is confidential and intended for the sole use of the addressee(s) so named. Any misuse of this confidential information contained herein may result in legal action by Computerized Security Systems dba SAFLOK and its parent company.



Frequently Asked Questions

1. How does my new InSync I lock work?

Your InSync I lock communicates unique and encrypted access codes to the lock via radio frequency (RF) signals.



2. What do I need to operate my lock?

To operate your lock, you will need an RFID key.

3. What kind of information is contained in my RFID key that enables it to operate the lock?

The barrel of each RFID key is encoded with a unique, encrypted access code.

4. What does it mean if the GREEN light flashes once and this is followed by six RED flashes?

This sequence signals that the battery is low. Please report this to management to avoid a potential lockout.

Note: Please report any other light signals to management to avoid a potential lockout.



A Member of the Kaba Group

For worldwide office locations and contact information, visit us at

www.saflok.com

USA·Canada

Phone: **877.272.3565**

Europe · Middle East · Africa

Phone: **33.1.30.13.04.04**

Asia

Phone: **86.10.5861.3561**

Manufactured under one or more of the following patents:

U.S.: 4,177,657; 4,411,144; 4,534,194; 4,890,870; 5,198,643;
5,477,041; 5,820,177; 5,986,564; 7,051,561; D494,841; D501,131
D512,899; D519,021; D531,629; D533,009; D533,047; D533,762;
D533,763; D535,629 CANADA: 1,252,854; 1,298,902
U.K. 2,010,375

Other U.S. and foreign patents pending

SAFLOK reserves the right to modify the characteristics and features of all products in this publication.
©2008 SAFLOK, all rights reserved.