

Door Closer Finishes

TS91 / TS92 / TS93

A range of finishes to suit your design



Door Hardware

When specifying dormakaba Door Closers you can choose between a number of different "finish" and cover options

Available in three different formats:

dormakaba Contur Design

- Available in Silver, Colour Coated, Stainless Steel
- TS91 267mm x 65mm x 47mm (silver and coloured only)
- TS92 281mm x 65mm x 47mm
- TS93 EN2-5 275mm x 60mm x 53mm
- TS93 EN5-7 285mm x 71mm x 62mm

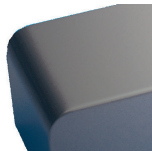
Full Square metal cover

- Available in Silver, Colour Coated, Stainless Steel, Polished Brass and Polished Chrome
- 312mm x 70mm x 55mm

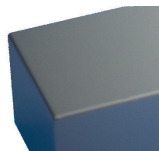
Full Softline metal cover

- Available in Silver, Colour Coated, Stainless Steel, Polished Brass and Polished Chrome
- 312mm x 70mm x 55mm

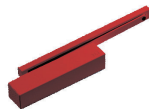
Full Softline metal cover
Silver



Full Square metal cover
Silver



Contour Design Cover
Colour Coated



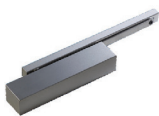
Contour Design Cover
Stainless Steel



Full Softline metal cover
Stainless Steel



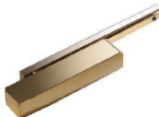
Full Square metal cover
Stainless Steel



Full Softline metal cover
Polished Brass



Full Square metal cover
Polished Brass



Full Softline metal cover
Colour Coated



General Features

- Unique DORMA cam-action technology
- Cam-action provides a low and rapidly decreasing opening resistance throughout the opening cycle enabling easy access for all users, especially the elderly, the young and those with disabilities.
- Cam action technology, along with the highly efficient mechanisms, assist in compliance with Approved Document M (ADM) in England and Wales / Section 3 in Scotland / Part R in Northern Ireland and BS8300 without compromising fire safety.
- Modular Slide Arm and Channel
- Adjustable sweep speed
- Adjustable latch speed
- Modular Channel system offering EMF Electromagnetic hold open or GSR Integral Door Co-ordinator options
- Successfully independently tested and CE Marked to BS EN1154
- CERTIFIRE Approved for fire doors (CF119)

TS93 Features

- EN2-5 or EN5-7 adjustable closing force
- Maximum door width 1250mm (EN2-5), 1600mm (EN5-7)
- Adjustable delayed action
- Adjustable 'Thinking' Backcheck
- This closer, when fitted at size EN3 (minimum for fire doors) will produce an opening force of less than 30N when fitted to doors 767mm wide or above

TS92 Features

- EN 1-4 adjustable closing force
- Maximum door width 1100mm
- This closer, when fitted at size EN3 (minimum for fire doors) will produce an opening force of less than 30N when fitted to doors 733mm wide or above

TS91 Features

- Fixed size EN3
- Maximum door width 950mm



CF119