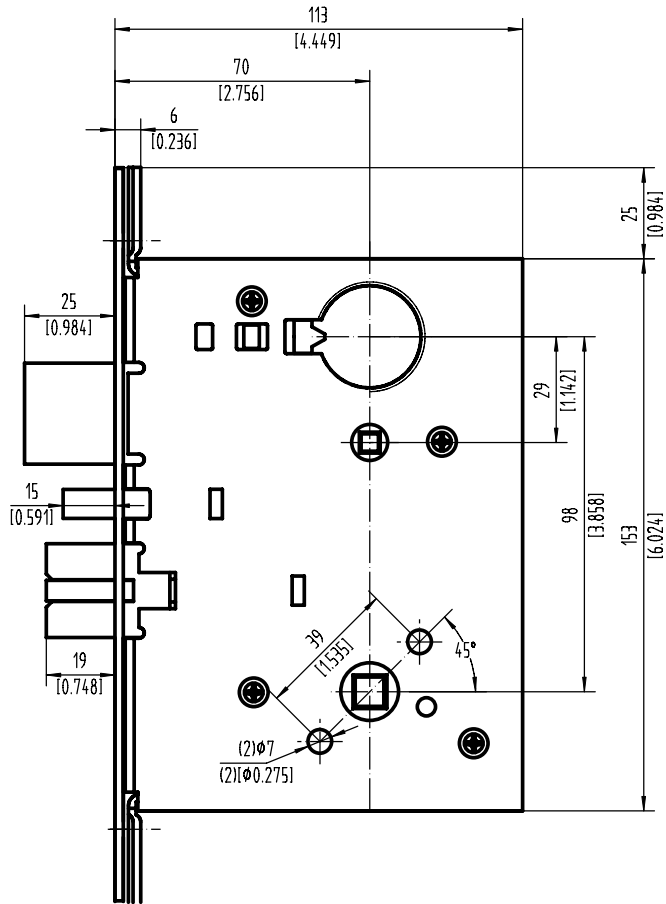
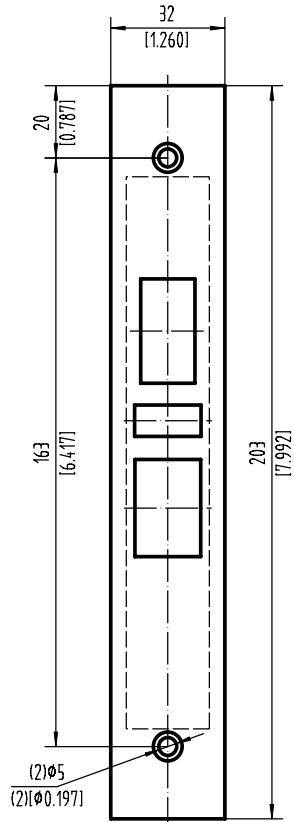


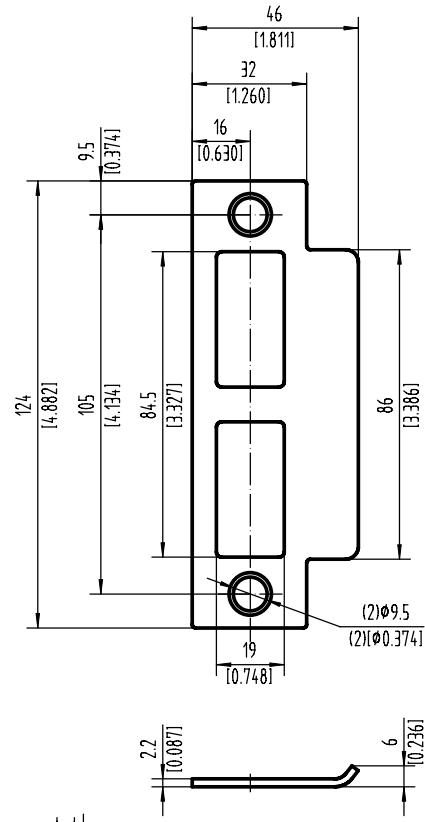
LOCK CASE



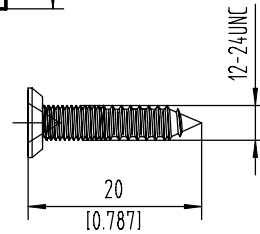
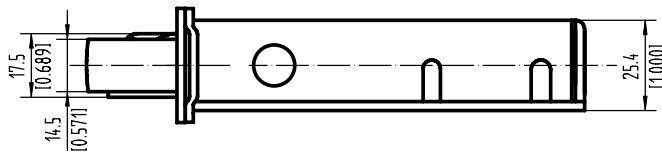
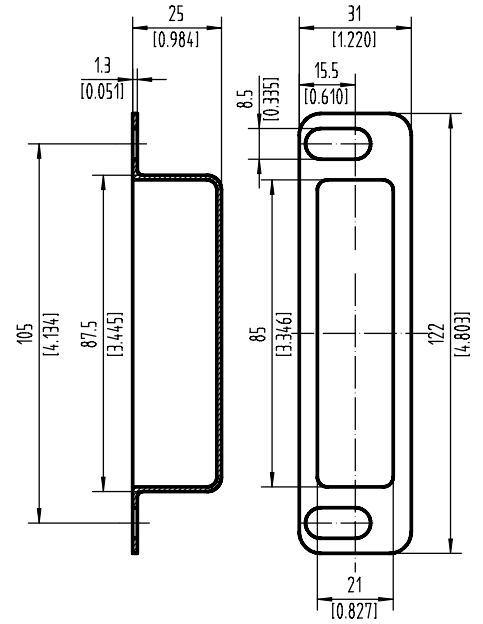
FACE PLATE



STRIKE



STRIKE BOX



For steel & woods doors Screw

NOTES:

1. DIMENSIONS ARE IN MM / [INCHES].
2. DO NOT SCALE DRAWING.
3. FOR #12-24 FHWS USE #16 (0.177") DRILL & TAP



DORMA Gulf Door Controls
P. O. BOX 17268

TEMPLATE NO. DL/DB 1000