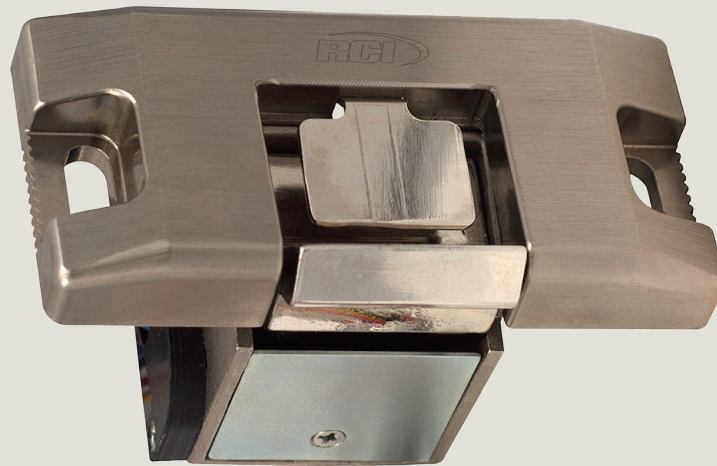


RCI VR166

Vertical Rod Strike









Simple locking solution for surface vertical rod exit devices having a Pullman style latch.

List Pricing (CAD)

Features

- A small footprint vertical rod strike to be used in single or double-door applications.
- Total footprint of the strike does not exceed 104 mm x 50 mm x 16 mm.
- Horizontal adjustability of 8 mm for frame and door variations.
- Solenoid activated.
- Designed and suited to a minimum 52 mm (2-1/16") backset of the top latch.
- UL294 Listed for Access Control Unit Accessory (6th Edition).
- UL1034 burglary-resistant Listed.

	Energy 210mA ¹ Field-Selectable 12/24VDC, 12-24VAC		Strength 1,500lb Static 70ft-lb Dynamic
	Warranty 5 Year Limited Warranty		Mode Fail-Secure
	Endurance 250,000 Cycles		Monitoring Optional Latch & Keeper Monitor Model Available

¹Max at 12VDC

Model	Price (CAD)
VR166	\$410.00
VR166LMKM	\$453.00

How To Order

VR166 x 32D
 LMKM - Latch and Keeper Monitor
Options

Example: **VR166LMKM x 32D**

Product Changes — dormakaba Canada Inc. reserves the right to discontinue models and/or make changes at anytime in materials, parts, components, specification, etc., without notice and without incurring any obligations on models built prior to the change.

Prices — Orders are accepted with the understanding that they will be billed at prices in effect at the time of shipment, except when firm prices have been quoted. Prices are subject to change without notice.

© dormakaba 2018 Information on this sheet is intended for general use only. dormakaba reserves the right to alter designs and specifications without notice or obligation. Printed in Canada.

dormakaba Canada Inc.
65 Struck Court
Cambridge, Ontario
Canada N1R 8L2
1-800-265-6630
sales_RCI@dormakaba.com
dormakaba.us

ZPVR166CAD-0119