

Wireless

## The new c-lever compact

### More than just a door handle

#### Smart control for your access

After presenting the access medium, a green signal appears on the digital light unit and you can operate the door as usual with the lever handle.

You can control access precisely for an almost unlimited number of users according to specific locations and time periods. You set the access rights and can then change them quickly and easily, in standalone or wireless mode.

#### Adapts to you

Digitalise your access with this new electronic door fitting c-lever compact while continuing to independently use the mechanical master key system. You can carry on using your lever handle and – depending on the installation situation – you can also keep the cylinder and lock.

RFID access media can be used for other applications that you already have in use in your organisation.

#### Aesthetically appealing and practical

The c-lever compact offers a stylish design combined with a wide range of functions. It is ideal for equipping inside doors quickly, efficiently and wirelessly.

Its innovative and extraordinary design means that it can be assembled upside down: a great benefit for doors in tight spaces, such as glass doors, or doors where the cylinder is located above the lever handle (Scandinavia, Asia).

Ideally suited for offices, administration areas and the retail sector, the c-lever compact will be available with a wireless function. Access rights can be conveniently adapted from a PC, wirelessly and in real time. This provides enormous advantages in terms of programming, maintenance and the highest level of security.

#### Advantages at a glance:

- Ideal solution for glass doors and inside doors
- Simple, wireless assembly – even upside down
- Award-winning and consistent product family with a unique variety of further components, such as digital and mechatronic cylinders and readers
- Supports NFC (Near Field Communication)

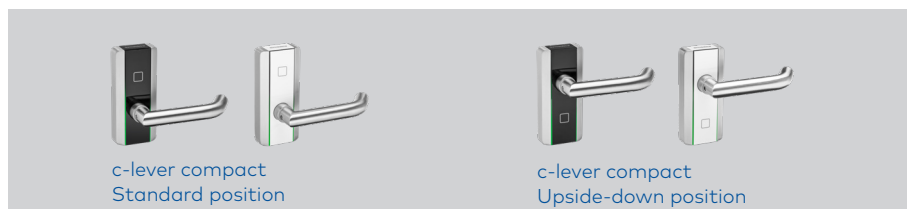
dormakaba Australia  
Head Office  
12-13 Dansu Court  
Hallam VIC 3803  
T: 1800 675 411  
info.au@dormakaba.com  
www.dormakaba.com.au

dormakaba New Zealand  
Head Office  
Building P, 61-69 Patiki Road  
Avondale, Auckland 1026  
T: 0800 436 762  
info.nz@dormakaba.com  
www.dormakaba.co.nz

# Features

## Sophisticated design

Building on its existing strengths, c-lever compact has been redesigned: incredibly simple assembly with only two screws, rapid conversion of mechanical door handles and a type that is particularly suitable for glass doors. Innovative engineering ensures that standard batteries provide sufficient power for up to 90,000 door movements.



## Easy planning

This electronic door fitting is independent of locks and cylinders. It is ideally suited to change to an electronic access system: replacing a mechanical lever handle expands your existing master key system into electronic access control.

## Easy assembly

Installation can be carried out on doors made of wood, glass or metal. The existing fixing holes on the door can generally be used, so that installation can be completed in minutes.

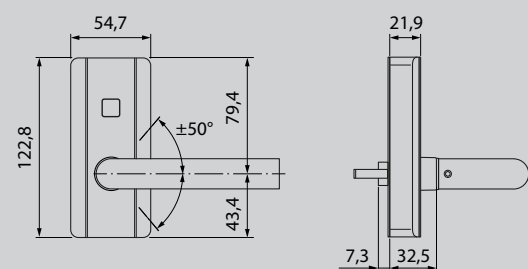
## Programming

The new c-lever compact is suitable both for single doors and as an element of a large master key system. Various programming options are possible:

- Manual programming: you don't need any software, you program directly at the relevant entrance using your master media.
- With programming device: whitelist programming on PC with Kaba evolo Manager (KEM) and transfer via programming device.
- With Kaba CardLink: authorisations are stored on the access medium. Users can pick up their authorisation from the terminal at any time and there is no need to reprogramme the doors concerned.
- With wireless function: authorisations can be transferred conveniently to the access components from your own desk.
- CheckIn operation: the Kaba evolo Manager Software offers the option for a special "CheckIn operation" which manages access for small hotels and guest houses. Access cards are individually programmed when guests arrive, using the desktop reader connected to the computer via USB.

## Important Kaba evolo features

- An unlimited number of access media can be managed
- Event memory for up to 2,000 door movements
- 15 configurable time profiles, each with 12 time windows
- 20 holiday periods and 64 special days
- Time-limited granting of user authorisations (validation)



c-lever compact, standard version. Type 2725

## Technical data

### Supported RFID Standards

- LEGIC (advant & prime)
- MIFARE (DESFire & Classic)

### Designs

- Standard, half

### Options

- Black or white cover

### Dimensions

- 54.7 x 122.8 x 21.9 mm (W x H x D)
- min. backset 30 mm, dependent on door and lock

### Power supply

- 2 x 1.5V, AAA batteries

### Environment/service life

- Temperature: -25 °C to +70 °C
- Protection class: IP54
- Humidity: 0 to 95 %, non-condensing
- Battery life at 20 °C: up to 90,000 cycles or up to 3 years

### Certificate (pending)

- Building hardware: EN 1906 application class 3
- Fire safety: DIN 18273 (tested in accordance with EN 1634-1)
- Emergency exit: EN 179 (in combination with appropriate lever handles and locks)

For further details and order information, please check the relevant Kaba evolo catalogue or system description.



**German Design Award**  
c-lever compact won in the category "Building and Elements" the special.