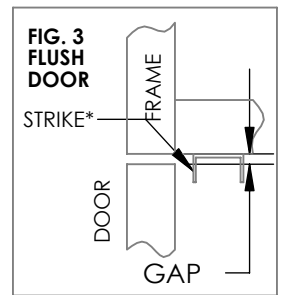
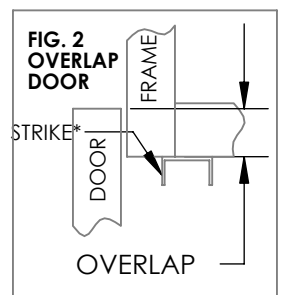
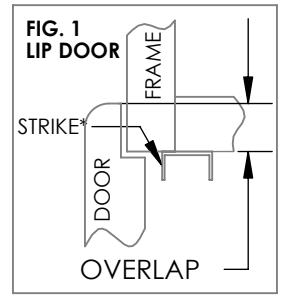
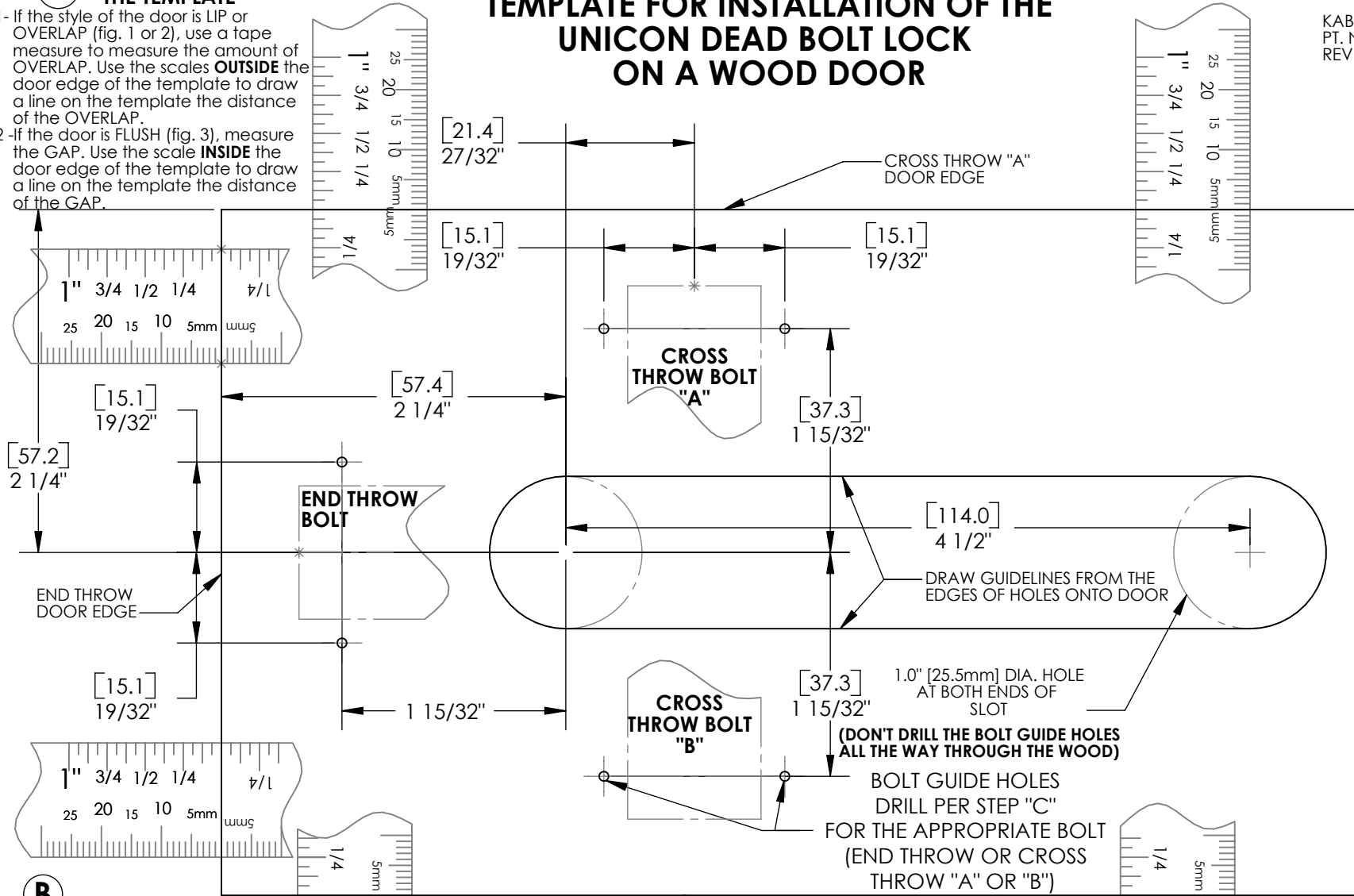


A MEASURING FOR THE TEMPLATE

- 1- If the style of the door is LIP or OVERLAP (fig. 1 or 2), use a tape measure to measure the amount of OVERLAP. Use the scales **OUTSIDE** the door edge of the template to draw a line on the template the distance of the OVERLAP.
- 2- If the door is FLUSH (fig. 3), measure the GAP. Use the scale **INSIDE** the door edge of the template to draw a line on the template the distance of the GAP.

TEMPLATE FOR INSTALLATION OF THE UNICON DEAD BOLT LOCK ON A WOOD DOOR

KABA MAS
PT. NO. 3066.026
REV. A 09/06



C PREPARING THE DOOR

- 1 - Center punch the bolt guide holes and the center of the two 1.0" [25.4mm] holes.
- 2 - Drill all holes with the appropriate bit, 1/16" [1.6mm] drill bit for soft wood, 5/64" [2mm] drill bit for hardwood. (**DON'T DRILL THE BOLT GUIDE HOLES ALL THE WAY THROUGH THE WOOD**)
- 3 - Using the 1.0" [25.4mm] drill bit, drill the hole at each end of the slot. (Drill halfway from each side to avoid splintering the wood).
- 4 - With the ruler draw two guidelines on the door connecting the holes.
- 5 - Saw out the slot along the guidelines.
- 6 - Use the file to smooth the edges and adjust the size of the opening.

B PLACING TEMPLATE ON THE INSIDE OF THE DOOR*

- 1 - Position the line drawn in step "A" at the bolt edge of the door.
 - 2 - Move the template along the the bolt edge to the desired position.
 - 3 - Tape in place.
- * - Positioning is based on assumed STRIKE mounting in figures.
(If mounting is different, adjust template position accordingly.)

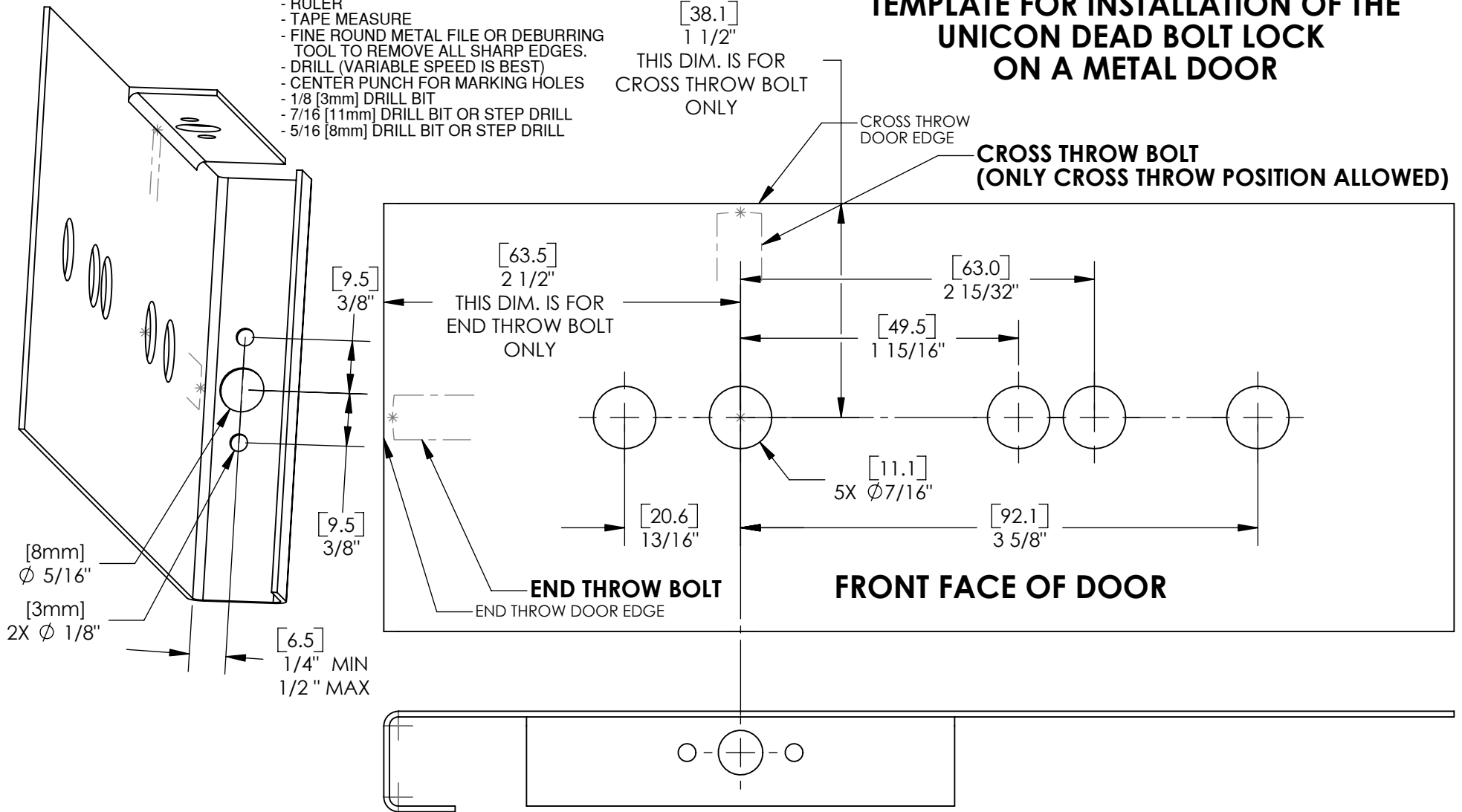
TOOLS REQUIRED

- PENCIL
- RULER
- TAPE MEASURE
- FINE CUTTING WOOD FILE
- DRILL (VARIABLE SPEED IS BEST)
- SCRIBE OR AWL FOR MARKING HOLES
- 1/16 [1.6mm] DRILL BIT FOR SOFT WOOD
- 5/64 [2.0mm] DRILL BIT FOR HARDWOOD
- 1.0" [25.4mm] WOOD BIT OR HOLE SAW
- KEYHOLE SAW, COPING SAW, OR JIG SAW

TOOLS REQUIRED

- PENCIL
- RULER
- TAPE MEASURE
- FINE ROUND METAL FILE OR DEBURRING TOOL TO REMOVE ALL SHARP EDGES.
- DRILL (VARIABLE SPEED IS BEST)
- CENTER PUNCH FOR MARKING HOLES
- 1/8 [3mm] DRILL BIT
- 7/16 [11mm] DRILL BIT OR STEP DRILL
- 5/16 [8mm] DRILL BIT OR STEP DRILL

TEMPLATE FOR INSTALLATION OF THE UNICON DEAD BOLT LOCK ON A METAL DOOR



A

PLACING TEMPLATE ON DOOR

- 1 - Position the bolt edge of the template on the bolt edge of the door.
- 2 - Move the template along the the bolt edge of the door to the desired position.
- 3 - Tape in place.

B

PREPARING DOOR FOR BOLT GUIDE

- 1 - Mark the three holes using the dimensions shown on the left side of this sheet.
- 2 - Drill the two small holes with a 1/8" [3mm] drill.
- 3 - Drill the center hole with a 5/16" [8mm] drill bit. (Bolt must slide freely in this hole.)
- 4 - Deburr all holes.

C

PREPARING THE DOOR FOR LOCK MOUNTING

- 1 - Center punch the five lock mounting holes.
- 2 - Drill all holes with the 7/16" [11mm] drill bit. (If a step drill is not used, a pilot hole may be required)
- 3 - Deburr all holes using a file or deburring tool.