



HSW EASY Safe

Secure hold even for
laminated safety glass

The new horizontal sliding wall holds even laminated safety glass, thanks to the proven Clamp&Glue technology – ensuring safety and easy installation.

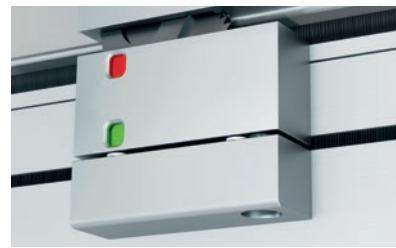
Contents



04 **Increased safety and design freedom**
Thanks to laminated safety glass and Clamp&Glue technology



05 **Easy installation**
With 3-in-1 multilock component



06 **Improved overview**
With lock status display



06 **Perfect symbiosis of technology and design**
With concealed door closers

Standards	
Wind load	<ul style="list-style-type: none"> • Air permeability class 2 in accordance with EN 12151 • Frame deflection class B2 in accordance with EN 12151 • Repeated pressure/suction in accordance with EN 12151 • Safety test class 1 (+/- 60°C) in accordance with EN 12151 • Test procedure in accordance with EN 12151 • Classification based on DIN EN 12151
Endurance strength	<ul style="list-style-type: none"> • Class 3 in accordance with EN 12151 for sliding doors > 100 kg • Class 3 in accordance with EN 12151

07 **Technical details**
Standards

HSW EASY Safe

For permanent safety

Safe application, elegant design. The improved horizontal sliding wall.

Outstanding strengths of the HSW EASY Safe system:

- The use of laminated safety glass (LSG) increases the level of safety and also expands the creative possibilities
- A visible status display uses a clear color system to indicate the status of the top

locking device in the pivoting sliding panel. This gives a better overview and even more security.

- Double brush seals in the top and bottom door rails reduce drafts to a minimum



Image video on request



Proven hold for maximum safety

Laminated safety glass for ensuring greater safety



Hassle-free installation thanks to proven Clamp&Glue technology

The fixing process for the HSW EASY Safe is very simple. The special adhesive is fed through the injection hole into the adhesive channel and distributes itself evenly. The panel can be installed after a drying time of only 15 minutes.

Creative freedom with permanent safety

Thanks to the proven Clamp&Glue technology, the HSW EASY Safe enables the use of laminated safety glass. The use of films within the laminated safety glass makes it possible to use the horizontal sliding wall as an individual design element, thereby setting new standards in design and functionality.

Impressive added value:

- Laminated safety glass not only makes the use of HSW EASY Safe an attractive option, but also one that is particularly secure
- The proven Clamp&Glue technology enables easy bonding whilst providing a secure hold for the fitting and the glass
- Special films in the laminated safety glass provide creative freedom in a variety of ways along with additional functions such as sun, noise or privacy protection

Simplicity on hand – and foot

The multilock with three locking options



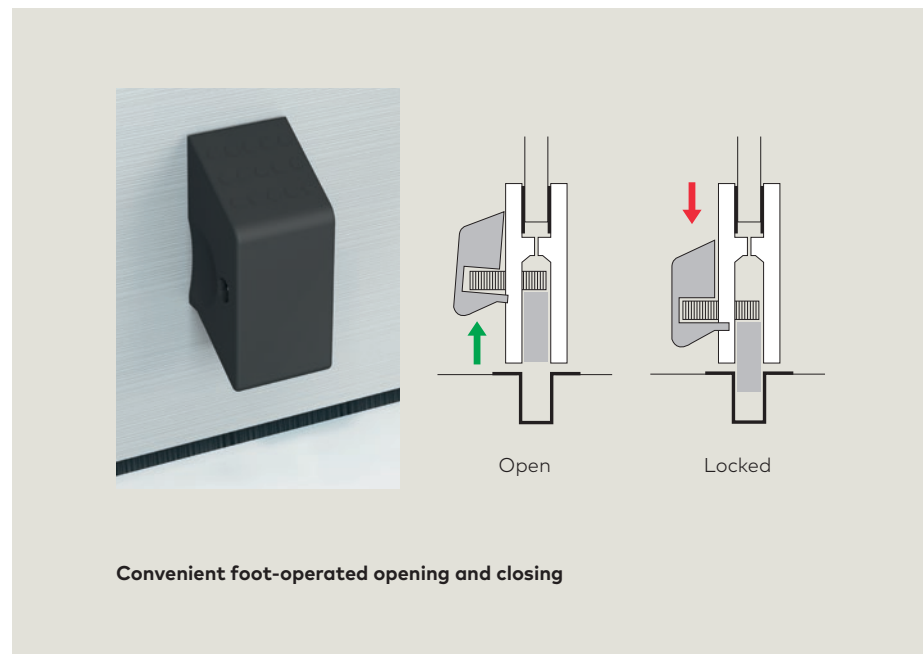
The new multilock system opens up a new world of simplicity

The multilock unites three locking options in one compact component.

- O1**
Face mounted slide bolt
- O2**
Cylinder lock
- O3**
End mounted slide bolt

Usefulness and simplicity provide clear benefits:

- The bottom door rail provides three options for secure locking: face mounted slide bolt, end mounted slide bolt or cylinder lock
- Maximum convenience in application provided by the foot-operated locking options of both the face mounted and the end mounted floor bolts – from easy to hassle-free



A smart way to greater convenience and security

Greater clarity and easier locking



The locking status at a glance

Security and convenience in one: the top door locking device clearly shows the locking status of the door panel on the status display. This quickly provides the user with a feeling of reassurance and security.

Status display



Sliding function

Locked

Locked

Open

Door function

Open

Locked

Locked



The concealed door closer – invisible and hassle-free

The perfect symbiosis of technology and design: In the pivoting/sliding panel of the HSW EASY Safe, the door closer ITS 96 2-4 is fully integrated into the top door rail and therefore remains out of sight.



Fewer drafts ensure even greater comfort

Innovative double brush seals in the top and bottom door rails provide proper containment isolation and noticeably reduce drafts to a minimum. The vertical brush seals that may optionally be used (available for retrofitting) can be mounted along the entire height of the panel and create additional sealing – for noticeably greater comfort.

Safety and reliability

Horizontal sliding walls from dormakaba

These combine high flexibility, elegant transparency, easy installation and convenient operation in a single system.

All this is provided with a high level of safety, as all the necessary standards are of course met.

Standards

Wind load	<ul style="list-style-type: none"> • Air permeability class 2 in accordance with EN 1026/12207 • Frame deflection class B2 in accordance with EN 12210 • Repeated pressure/suction class 1 (+/- 200 Pa) in accordance with EN 12211/12210 • Safety test class 1 (+/- 600 Pa) in accordance with EN 12211/12210 • Test procedure in accordance with EN 12211 • Classification based on DIN EN 14351-1
Endurance strength	<ul style="list-style-type: none"> • Class 3 in accordance with DIN EN 1527, corresponds to 25,000 cycles for suspended sliding doors > 100 kg • Class 3 in accordance with DIN EN 1191, corresponds to 20,000 cycles for door function for pivoting double-action panel, pivoting double-action sliding panel and single-action door
Impact test	<ul style="list-style-type: none"> • Class 5 in accordance with DIN EN 13049 (simulation and impact loads)
Corrosion test	<ul style="list-style-type: none"> • Class 4 in accordance with DIN EN 1670
EPD (Environmental Product Declaration)	<ul style="list-style-type: none"> • Environmental Product Declaration in compliance with ISO 14040

dormakaba UK & Ireland

E: info.gb@dormakaba.com

Wilbury Way, Hitchin
Hertfordshire
SG4 0AB

T: +44(0)1462 477600

F: +44(0)1462 477601