



## **HSW EASY Safe**

Secure hold even for  
laminated safety glass

The new horizontal sliding wall holds even laminated safety glass, thanks to the proven Clamp&Glue technology – ensuring safety and easy installation.

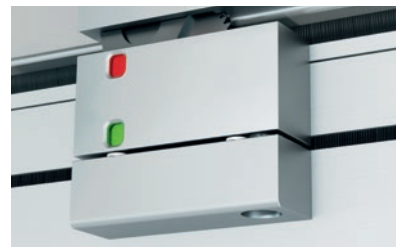
# Contents



**04** **Increased safety and design freedom**  
Thanks to laminated safety glass and Clamp&Glue technology



**05** **Easy installation**  
With 3-in-1 multilock component



**06** **Improved overview**  
With lock status display



**06** **Perfect symbiosis of technology and design**  
With concealed door closers

Standards	
Wind load	<ul style="list-style-type: none"> <li>• Air permeability class 2 in accordance with EN 12151</li> <li>• Frame deflection class B2 in accordance with EN 12151</li> <li>• Repeated pressure/suction in accordance with EN 12151</li> <li>• Safety test class 1 (+/- 60°C) in accordance with EN 12151</li> <li>• Test procedure in accordance with EN 12151</li> <li>• Classification based on DIN EN 12151</li> </ul>
Endurance strength	<ul style="list-style-type: none"> <li>• Class 3 in accordance with EN 12151 for fixed sliding doors &gt; 100 kg</li> <li>• Class 3 in accordance with EN 12151 for sliding doors &gt; 100 kg</li> </ul>

**07** **Technical details**  
Standards

# HSW EASY Safe

## For permanent safety

**Safe application, elegant design. The improved horizontal sliding wall.**

### **Outstanding strengths of the HSW EASY Safe system:**

- The use of laminated safety glass (LSG) increases the level of safety and also expands the creative possibilities
- A visible status display uses a clear color system to indicate the status of the top

locking device in the pivoting sliding panel. This gives a better overview and even more security.

- Double brush seals in the top and bottom door rails reduce drafts to a minimum



Image video on request



## Proven hold for maximum safety

### Laminated safety glass for ensuring greater safety



#### Hassle-free installation thanks to proven Clamp&Glue technology

The fixing process for the HSW EASY Safe is very simple. The special adhesive is fed through the injection hole into the adhesive channel and distributes itself evenly. The panel can be installed after a drying time of only 15 minutes.

#### Creative freedom with permanent safety

Thanks to the proven Clamp&Glue technology, the HSW EASY Safe enables the use of laminated safety glass. The use of films within the laminated safety glass makes it possible to use the horizontal sliding wall as an individual design element, thereby setting new standards in design and functionality.

#### Impressive added value:

- Laminated safety glass not only makes the use of HSW EASY Safe an attractive option, but also one that is particularly secure
- The proven Clamp&Glue technology enables easy bonding whilst providing a secure hold for the fitting and the glass
- Special films in the laminated safety glass provide creative freedom in a variety of ways along with additional functions such as sun, noise or privacy protection

# Simplicity on hand – and foot

## The multilock with three locking options



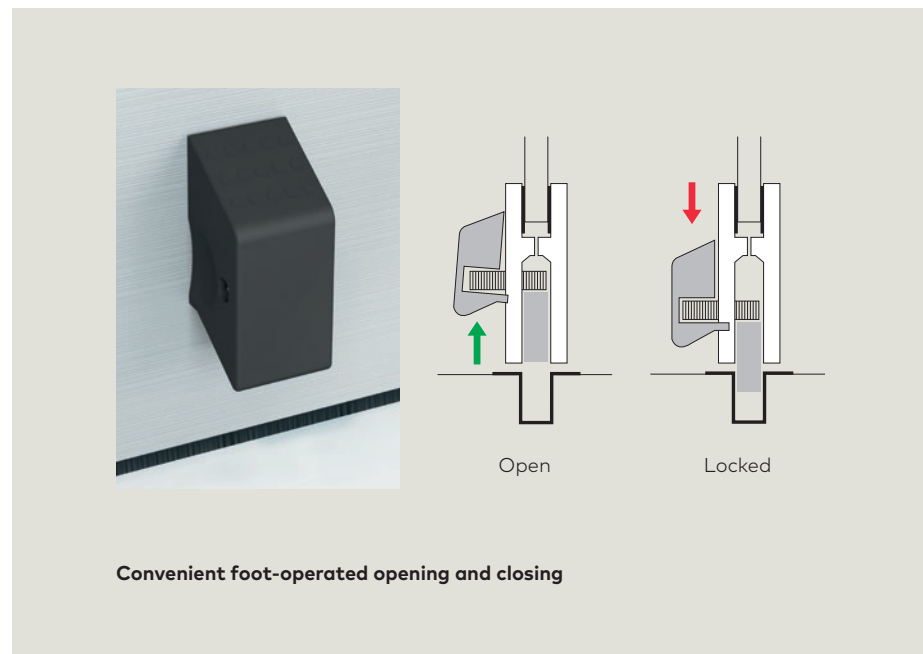
### The new multilock system opens up a new world of simplicity

The multilock unites three locking options in one compact component.

- O1**  
Face mounted slide bolt
- O2**  
Cylinder lock
- O3**  
End mounted slide bolt

### Usefulness and simplicity provide clear benefits:

- The bottom door rail provides three options for secure locking: face mounted slide bolt, end mounted slide bolt or cylinder lock
- Maximum convenience in application provided by the foot-operated locking options of both the face mounted and the end mounted floor bolts – from easy to hassle-free





# A smart way to greater convenience and security

## Greater clarity and easier locking



### The locking status at a glance

Security and convenience in one: the top door locking device clearly shows the locking status of the door panel on the status display. This quickly provides the user with a feeling of reassurance and security.

Status display



Sliding function

Locked

Locked

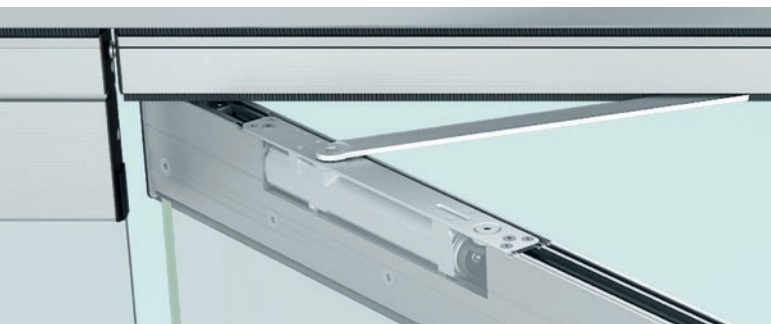
Open

Door function

Open

Locked

Locked



### The concealed door closer – invisible and hassle-free

The perfect symbiosis of technology and design: In the pivoting/sliding panel of the HSW EASY Safe, the door closer ITS 96 2-4 is fully integrated into the top door rail and therefore remains out of sight.



### Fewer drafts ensure even greater comfort

Innovative double brush seals in the top and bottom door rails provide proper containment isolation and noticeably reduce drafts to a minimum. The vertical brush seals that may optionally be used (available for retrofitting) can be mounted along the entire height of the panel and create additional sealing – for noticeably greater comfort.

# Safety and reliability

## Horizontal sliding walls from dormakaba

These combine high flexibility, elegant transparency, easy installation and convenient operation in a single system.

All this is provided with a high level of safety, as all the necessary standards are of course met.

---

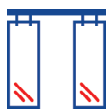
### Standards

---

Wind load	<ul style="list-style-type: none"> <li>• Air permeability class 2 in accordance with EN 1026/12207</li> <li>• Frame deflection class B2 in accordance with EN 12210</li> <li>• Repeated pressure/suction class 1 (+/- 200 Pa) in accordance with EN 12211/12210</li> <li>• Safety test class 1 (+/- 600 Pa) in accordance with EN 12211/12210</li> <li>• Test procedure in accordance with EN 12211</li> <li>• Classification based on DIN EN 14351-1</li> </ul>
Endurance strength	<ul style="list-style-type: none"> <li>• Class 3 in accordance with DIN EN 1527, corresponds to 25,000 cycles for suspended sliding doors &gt; 100 kg</li> <li>• Class 3 in accordance with DIN EN 1191, corresponds to 20,000 cycles for door function for pivoting double-action panel, pivoting double-action sliding panel and single-action door</li> </ul>
Impact test	<ul style="list-style-type: none"> <li>• Class 5 in accordance with DIN EN 13049 (simulation and impact loads)</li> </ul>
Corrosion test	<ul style="list-style-type: none"> <li>• Class 4 in accordance with DIN EN 1670</li> </ul>
EPD (Environmental Product Declaration)	<ul style="list-style-type: none"> <li>• Environmental Product Declaration in compliance with ISO 14040</li> </ul>

---

# Our products



## Interior Glass Systems

System solutions made from glass for a wide range of everyday and office applications



## Mechanical Key Systems

Systems that enable access rights and key control to all rooms within the premises



## Lodging Systems

Hotel locks and locking systems as well as access management solutions for holiday homes



## Electronic Access & Data

Electronic access control and workforce management for efficient access management, security and data collection



## Entrance Systems

Automated access solutions for convenient access to buildings



## Door Hardware

Solutions for residential or commercial projects



## Safe Locks

Security locks for preventing unauthorized access to goods, valuables, information or hazardous substances



## Services

Tailor-made services and customized maintenance for long-term functional integrity of access and security solutions

