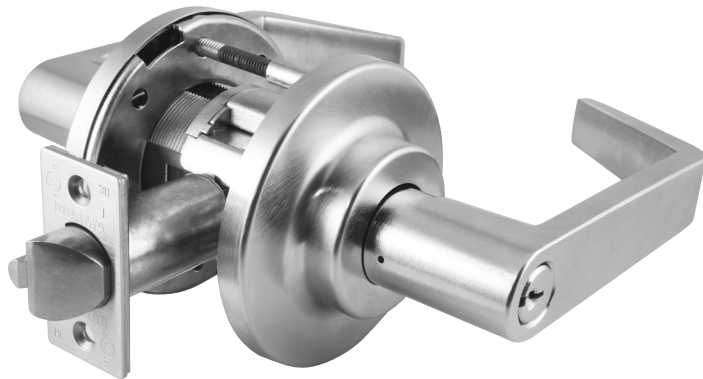


# RCI Locksets



## C800 Series Grade 1 Heavy-Duty Cylindrical Locksets

Provides exceptional security, enhanced aesthetics and rugged dependability.



Energy  
290mA @ 12VDC  
145mA @ 24VDC



Strength  
ANSI/BHMA A156.2



Warranty  
2 Year Limited Warranty



Mode  
Fail-Safe & Fail-Secure  
Options Available



Fire-Rated  
3-Hour Fire-Rated



Door Type  
Designed For Wood  
And Hollow Metal  
Doors

- Easy to install in all swinging doors with ANSI/BHMA Standard A156.115 preparations for cylindrical locks
- Designed for wood and hollow metal doors
- Fail-safe (EL) and fail-secure (EU) options available
- Easily adjustable to accommodate doors from 1-3/4"–2-1/4" thick without spacers (1-3/8"–1-5/8" with spacers PC8DS1). Consult the factory for other thicknesses
- Non-handed for simple installation (excluding LF or LV handed levers)
- Lock is through-bolted for additional strength and security
- Cast stainless steel latch retractor with roller bearings for exceptionally smooth operation and superior strength and durability
- Lock chassis constructed of steel, stainless steel and zinc components for superior strength and corrosion resistance
- Stainless steel latch bolt for superior strength
- Auxiliary deadlocking latch bolt for strength and durability
- Premium PVD (physical vapor deposition) finishes for consistent durable color on 605, 606, 612, 613 and 619
- Available in: 24VDC (145mA) & 12VDC (290mA)
- Request-to-exit signaling switch: 250VAC, 1A, 22AWG wire leads on lever locks
- Certified to ANSI/BHMA standard A156.2, Series 4000 Grade 1
- Tested to 3.5-million cycles by an independent laboratory
- Meets A117.1 accessibility code and ADA requirements for barrier-free accessibility
- UL/cUL – UL 10C Positive Pressure
- All C800 Series locks are Listed 3-hour fire rated
- Locks with 1/2" throw latch bolts are listed for A label and lesser class doors, 4'0" x 8'0" maximum per leaf
- California State Reference Code (formerly title 19, California State Fire Marshal standard), all levers with returns, return to within 1/2" (12 mm) of door face



# RCI Locksets

## How To Order

Function		Cylinder Type <sup>1</sup>		Finish <sup>2</sup>		Latch Bolts <sup>5</sup>		Strike Options		Lip Length		Keying Options <sup>5</sup>	
Fail-Secure	80EU	S	-Sargent 10 Line KIL (less cylinder)	626	-Satin Chrome (Standard)								
		D	-Conventional Cylinder	625	-Bright Chrome								
Fail-Safe	80EL	L	-Less Cylinder	619PVD	-Satin Nickel								
		C	-SFIC	613PVD	-Dark Oxidized Satin Bronze								
C8		J	-Less SFIC	612PVD	-Satin Bronze								
		T	-Temporary SFIC	606PVD	-Satin Brass								
		R	-Schlage FSIC (less core)	605PVD	-Bright Brass	AM	-Antimicrobial Coating <sup>3</sup>				5001	1316	
Request to Exit	RX	LR	C	-3-1/2" Dia.	5	-12VDC	TX	RH	-Right Hand	134	-1-3/4"	-2-1/4"	
		LC	D	-3-1/2" Dia. stamped, LOCK	8	-24VDC	-Security Screws	LH	-Left Hand	138	-1-3/8"	-1-5/8"	
		LG	E	-3-1/2" Dia. stepped rose									
		LT	F	-3-1/2" Dia. stepped rose stamped, LOCK									
		LF <sup>6</sup>											
		LV <sup>6</sup>											

<sup>1</sup>Consult factory for other cylinder options.  
<sup>2</sup>For split finishes, consult factory. Specify hand.  
<sup>3</sup>Available on 626 finish only. Consult factory for other finishes.  
<sup>4</sup>Door Thickness Range: 1-3/4"-2-1/4" without spacers, 1-3/8"- 1-5/8" with spacers.  
<sup>5</sup>See next page for options  
<sup>6</sup>Specify handing when ordering LF or LV levers  
**NOTE:** Consult factory for lead times on other options

### Standard models include:

- C8 80EL D LR E 626 5 10252 134 5001 1316
- C8 80EL D LR E 626 8 10252 134 5001 1316
- C8 80EL RX D LR E 626 5 10252 134 5001 1316
- C8 80EL RX D LR E 626 8 10252 134 5001 1316
- C8 80EU D LR E 626 5 10252 134 5001 1316
- C8 80EU D LR E 626 8 10252 134 5001 1316
- C8 80EU RX D LR E 626 5 10252 134 5001 1316
- C8 80EU RX D LR E 626 8 10252 134 5001 1316

# RCI Locksets

## Latch Bolts

Latch Throw	Latch Type	Face
3/4" Throw Latch	18	5 - All Other Functions
1/2" Throw Latch	10	0 - C810, C840, C844
2-3/8" Backset	1	0 - 1" Face, Square Corner
2-3/4" Backset	2	1 - 1" Face, 1/4" Radius Corner
3-3/4" Backset	3	2 - 1-1/8" Face, Square Corner
5" Backset	5	

## Keying Options

### Standard Keyways

Keyway	Keying
OBIT	-O-Bitted -Construction Master Keyed
CMK	-Master Keyed
MKD	-Master Keyed
NSK	-Non-Stock Keyed
KA4	-Keyed Alike, Sets of 4
KA2	-Keyed Alike, Sets of 2
KD	-Keyed Different
SC	-Schlage C
SE	-Schlage E
D100	-DORMA SKC
CA	-Corbin 60
CD	-Corbin 59A1
CE	-CorbinRusswin L4
RA	-Russwin 981
RB	-Russwin D1
GA	-Sargent LA
SF	-Schlage F
WA	-Weiser E
YA	-Yale 8
YG	-Yale GA

Retrofit Keyways Available  
O-Bitted Only

### IC Keyways

Keyway	Keying
TMP	-Temporary Construction Core
MKD	-Combined (Master Keyed)
BA	-Best A
BB	-Best B
BC	-Best C
BD	-Best D
BE	-Best E
BF	-Best F
BG	-Best G
BH	-Best H
BJ	-Best J
BK	-Best K
BL	-Best L
BM	-Best M
BQ	-Best Q
D100	-DORMA SKC (7-pin Core Only)
BLK	-Black Construction Core
BLU	-Blue Construction Core
GRN	-Green Construction Core

Specify color if required to match existing project

## Lever Designs

