

Kaba Mas  
X0 Series  
X-10/CDX-10/  
DKX-10/DKXL-10  
Price List

Rev. C  
March 2019



# Limited Warranty

Kaba Mas LLC ("Kaba Mas") warrants to the original purchaser that the product(s) shall be free of defects in material and workmanship for a period of two (2) years from the date of manufacture by Kaba Mas, the X-10 High Security Lock, beginning with serial number X10X001003252014ARM (March 25, 2014), This warranty applies provided there is compliance with all installation/operating instructions supplied by Kaba Mas and, provided further, that the product has been subject to normal use without any misuse, negligence, modification, or the occurrence of any accidental damage.

KABA MAS MAKES NO OTHER WARRANTY WITH RESPECT TO THE PRODUCT, EXPRESSED OR IMPLIED, INCLUDING WITHOUT LIMITATION ANY WARRANTY AS TO SUITABILITY OF THE PRODUCT FOR ANY PARTICULAR PURPOSE OR USE OR THE MERCHANTABILITY THEREOF AND SHALL NOT BE LIABLE FOR ANY LOSS OR DAMAGE SUSTAINED THROUGH BURGLARY, THEFT, ROBBERY, FIRE OR OTHER HAZARD. THIS LIMITED WARRANTY IS IN LIEU OF ALL OTHER WARRANTIES OR CONDITIONS EXPRESSED OR IMPLIED BY LAW AND/OR CUSTOM.

In the event of a defect in materials or workmanship covered by this warranty, the purchaser shall return, at purchaser's expense, the product to Kaba Mas for repair or replacement. Repair or replacement shall be at the election of Kaba Mas. The purchaser's sole remedy shall be the repair or replacement of the product and under no circumstances shall Kaba Mas be liable to the purchaser or any other person for any consequential, incidental, economic, direct, indirect, general or special damages arising out of any breach of warranty. In no event shall Kaba Mas's liability exceed the original cost of the product.

This warranty and remedies set forth above are exclusive and in lieu of all others, oral or written, expressed or implied. No dealer, distributor, agent or employee is authorized to make any modification or addition to this warranty.

Kaba Mas EXPRESSLY DISCLAIMS ANY WARRANTY OF NON-INFRINGEMENT PROVIDED UNDER KRS 355.2.312, UCC §2-312, OR SIMILAR LAW. KABA MAS SHALL NOT INDEMNIFY NOR BE RESPONSIBLE FOR ANY DAMAGES ARISING OUT OF A CLAIM THAT THIS PRODUCT INFRINGES ANY PATENT.

Some states do not allow the exclusion or limitation of implied warranties or limitation of liability for incidental or consequential damages, so the above limitation or exclusion may not apply to you.

## **NOTICE**

Installation of the product with any unapproved accessory item or product may invalidate the Kaba Mas, LLC Limited Product Warranty.

# Terms & Conditions of Sale

## Terms and Conditions

All sales will be subject to the terms and conditions set forth herein, and any terms and conditions contained in any orders contrary to these terms and conditions will be null and void. Kaba Mas reserves the right to immediately and without further notice discontinue the selling of products to any customer that does not fully comply with these terms and conditions. Customer may not assign any rights or obligations without prior written consent of Kaba Mas.

## Products and Prices

All prices of the products are set forth in the List Price Book. Kaba Mas reserves the right to amend such prices from time to time, and to discontinue the production of any product, or to change the design, function and finish thereof, without prior notice to the customer.

## Credit Issues

Kaba Mas retains a purchase money security interest in all goods and materials which have been or are hereafter acquired by customer with credit granted by Kaba Mas ("Collateral"). Upon any default by customer, Kaba Mas shall have the rights of a secured party under the Uniform Commercial Code as adopted by the Commonwealth of Kentucky, as amended upon any default by customer. Kaba Mas may require customer to assemble the Collateral at a place designated by Kaba Mas. Customer shall reimburse Kaba Mas for all costs (including reasonable attorney's fees) incurred in collecting any amounts due to Kaba Mas or executing its interest hereunder. In addition to any other right or remedy hereunder, Kaba Mas shall have at all times the right to offset any obligation of customer to Kaba Mas against any obligation of Kaba Mas to customer. If in Kaba Mas' sole judgement any doubt arises at any time as to the ability of the customer to pay for the products, or if the customer at any time is past due in payment of any amount owing to Kaba Mas, Kaba Mas may (without liability and without prejudice to any remedies, and regardless of any schedule of shipment or payment to the contrary), delay production, postpone any shipment or stop any product in transit until Kaba Mas shall have received payment in full of all amounts, whether or not then due, owing to it by the customer. In case of any such postponement, the price of the products affected shall be the price in effect on the date of final shipment. Payment terms are Net 30 days unless otherwise specified. Any action or proceeding brought by customer of Kaba Mas arising out of these terms shall be brought solely in a court of competent jurisdiction located in Fayette County, Kentucky.

## Warranty

Customer shall forever indemnify, defend and hold harmless Manufacturer from and against any and all losses, damages, costs (including, without limitation, attorney fees and court costs), expenses, claims, liabilities, obligations and judgements related to the product or the sale or use thereof to the extent not covered by Kaba Mas' warranty, including without limitation, by reason of any unauthorized warranties or representations with respect thereto. Customers shall promptly notify Kaba Mas of all charges, complaints or claims concerning the product, whether or not covered by Kaba Mas' warranty, and shall fully cooperate with Kaba Mas in investigating and resolving the same. The customer shall not repair, replace, modify or tamper with any product for warranty purposes unless the written consent of Kaba Mas is first obtained.

## Taxes

Any taxes, duties, levies or other charges now hereafter imposed directly or indirectly on Kaba Mas or required to be collected directly or indirectly by Kaba Mas by any taxing authority in connection with the sale, delivery, use or consumption of the products, including, without limitation, any sales, documentary, use, excise, purchase, turnover and import taxes, consular fees and customs duties shall be for the account of the customer, and the customer shall on demand forthwith pay to Kaba any such tax, levy or charge.

## Promotion of Products

The customer shall sell and promote the products in a manner which will enhance the image and good will of Kaba Mas, its customer and the products. The use of Kaba Mas' trademarks and name is strictly prohibited without prior written consent of Kaba Mas.

# Terms & Conditions of Sale

## Continued

### **Minimum Orders**

Minimum order amount per shipment is \$100.00 net.

### **Order Acknowledgements**

All Kaba Mas orders will be acknowledged in writing within three (3) business days after receipt of all information pertinent to the order. It is the responsibility of the customer to check all acknowledgements in order to ascertain that they conform to their purchase order. All estimates of dates of delivery are made by Kaba Mas in good faith, and are not guaranteed.

### **Cancellations/Changes**

Requests for cancellations or changes must be received by Kaba Mas within 5 business days of order acknowledgement date. Kaba Mas reserves the right to impose a restocking fee, as a percentage of the value of the merchandise, should a cancellation or change be made after production has begun.

### **Claims**

Claims for shortages or errors in packaging must be made to Kaba Mas in writing within ten (10) business days after receipt of shipment.

### **Returned Merchandise**

Returns will not be accepted without prior written approval by Kaba Mas and without a Returned Goods Authorization Number issued by Kaba Mas' Customer Service Department. All returns are subject to a restocking charge. Purchaser must provide invoice number and information regarding original date of shipment with all returned goods. Electronic components sold under the Parts Program are not returnable under any circumstances.

### **Shipments**

All products shall be shipped FCA factory and shall be deemed the property of the customer when accepted by the carrier. Unless otherwise agreed in writing, the choice of carrier shall be at Kaba Mas' sole discretion. A service fee of \$25.00 (net) will be applied to all orders drop shipped at the request of the customer.

### **Force Majeure**

Kaba Mas shall be excused for any delay in performance hereunder and shall not be responsible for any loss or damage caused by acts of God; accident or casualty; war or warlike activities; insurrection or civil commotion; supply, labor, engineering, or transportation difficulties; acts of any government (with or without valid jurisdiction); strikes; blockades; boycotts, lockouts or any other causes, whether or not similar in nature to those specified herein, beyond Kaba Mas' control. The provision as regards strikes, blockades, boycotts and lockouts shall apply irrespective of whether Kaba Mas itself is the subject or instigator of such a measure. Performance by Kaba Mas hereunder shall be suspended during the continuance of any such measure..

# FF-L-2740B

X-10™



### High-Security Lock

Model/Power	Description	LIN (Lock Identification Number)	List Price
X10X	Standard OEM, Distributor, Self-Powered	X10XXXXXXXXXX	\$1,841.00

### Housing/Display

RD	Round	xxxxRDxxxxxxxx	Add to List no add
----	-------	----------------	-----------------------

### Bolt

XXT	Dead Bolt, 10-32.5 (2X) Tapped Holes	xxxxxXTxxxxx	standard
-----	--------------------------------------	--------------	----------

### Relocker/Case Cover

Z	Standard	xxxxxxxZxxxxx	no add
---	----------	---------------	--------

### Door Measurement

A	.92" (23.37 mm) Door	xxxxxxxxxAxxxx	no add
B	1.06" (26.92 mm) Door	xxxxxxxxxBxxxx	no add
C	1.13" (28.7 mm) Door	xxxxxxxxxCxxxx	no add
D	1.17" (29.72 mm) Door	xxxxxxxxxDxxxx	no add
E	1.25" (31.75 mm) Door	xxxxxxxxxExxxx	no add
F	1.38" (35.05 mm) Door	xxxxxxxxxFxxxx	no add
H	2.06" (52.32 mm) Door	xxxxxxxxxHxxxx	no add
K	2.25" (57.15 mm) Door	xxxxxxxxxKxxxx	no add
M	4.50" (114.3 mm) Door	xxxxxxxxxMxxxx	standard
N	10.0" (254 mm) Door	xxxxxxxxxNxxxx	add \$320.00

### Country Code

E	United States	xxxxxxxxxExxx	Add to List no add
---	---------------	---------------	-----------------------

### Dial Label

Z	Standard	xxxxxxxxxxxZxx	no add
---	----------	----------------	--------

### Install

1	Distributor/Government (Individual)	xxxxxxxxxxxx1x	no add
---	-------------------------------------	----------------	--------

### Packaging

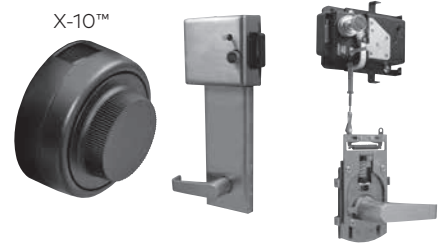
A	Distributor/Government (Individual)	xxxxxxxxxxxxxA	no add
---	-------------------------------------	----------------	--------

**X-10 locks packed (10) per master carton**



# FF-L-2890C

## High Security Pedestrian Door Lock Type II



Model	Description	LIN (Lock Identification Number)	List Price
DKXL	Cylindrical Grade 1 Life Safety Device	DKXLxxxxxxxx	\$4,295.00
<b>Finish</b>			
A	US26D (Standard)	xxxxAxxxxxxxx	no add
<b>Handing</b>			
1	Lock Assembly RH	xxxxx1xxxxxxxx	no add
2	Lock Assembly LH	xxxxx2xxxxxxxx	no add
B	Type II 24V Solenoid Release - Storeroom Function (SI or LI)	xxxxxxBxxxxxx	\$100.00
D	Type II 24V Solenoid Release - Storeroom Function (NI)		
<b>O/S Handle</b>			
SI	Prepped for Small Format Interchangeable Core, US26D ADA Lever*	xxxxxxxSIxxxxx	\$8.00
NI	Prepped for Standard K/L Cylinder, SC1 KWY, US26D ADA Lever*	xxxxxxxNIxxxxx	no add
LI	Prepped for Large Format Interchangeable Core, US26D ADA Lever*	xxxxxxxLIxxxxx	\$8.00
*cores / cylinders not included			
<b>Backset</b>			
A	2 3/4" Deadlatch US26D Inswing/ Inswing STC Door (for use with #1 and #3 CD Strike)	xxxxxxxxxAxxx	no add
B	3 3/4" Deadlatch US26D Outswing Only (for use with #2 and #9 CD Strike)	xxxxxxxxxBxxx	\$20.00
C	5' Deadlatch US26D Outswing STC Door (for use with #2 and #9 CD Strike)	xxxxxxxxxCxxx	\$40.00
<b>Strike Plate</b>			
1	4 7/8" ANSI Strike US26D	xxxxxxxxx1xx	no add
<b>I/S Handle</b>			
A	ADA Lever US26D	xxxxxxxxxAx	no add

<b>CD Strike</b>			
1	#1 Strike Kit F/CDX-10 (for use with 2¾" Deadlatch)	xxxxxxxxxxxx1x	no add
2	#2 Strike Kit F/CDX-10 (for use with 3¾" and 5" Deadlatch)	xxxxxxxxxxxx2x	no add
3	#3 Strike Kit F/CDX-10 (for use with 2¾" Deadlatch)	xxxxxxxxxxxx3x	no add
9	#9 Strike Kit F/CDX-10 (for use with 3¾" and 5" Deadlatch)	xxxxxxxxxxxx9x	no add
<b>Options</b>			
Z	For Future Use	xxxxxxxxxxxxZ	no add



**When ordering, must include Part Number 521026**

Example: DKXLA1SIA1A1A12/521026

# FF-L-2890C

High Security Pedestrian Door Lock  
Type IV



**DKX-10**

**Type IV (PDLAP)**

**Part #**

521026/511052

**Description**

Includes X-10, CDX base plate (521031)  
Type 2 strike, F9300 fire-rated rim exit device,  
strike and electrified outside lever trim

**List Price**

\$5,970.00

**Accessory**

**Part #**

515110

**Description**

RCI F0162X32D, Fire-rated surface mount  
electronic strike 12/24 VAC/DC

**List Price**

\$599.00



**CDX-10**

**Type VI**

**NOTE: to order the CDX-10 please specify strike using the information below**

**Part #**

**Description**

**List Price**

For mounting specify (includes plate and strike):

521025/521030	Strike Type 1	\$2,384.00
521025/521031	Strike Type 2	\$2,384.00
521025/521032	Strike Type 3	\$2,384.00
521025/521033	Strike Type 9	\$2,384.00

CDX-10™



**NOTE: All DKX-10 and DKXL-10 devices are configured to operate with all FF-L-2740B approved devices.  
Contact Kaba Mas for more details.**



# X-10 Parts

<b>Accessories</b>	<b>Display Stand</b>	<b>List \$ Per</b>
104035	Display Stand for X-10	\$93.00
527075	X-10 Mounted on Display Stand	\$1987.00
<b>Part #</b>	<b>X-10 LCD Assembly (IC)</b>	<b>List \$ Per</b>
507081	Contents: LCD Endcap Assembly, Type 2, Non-Backlit (1)	\$170.00
527081	Contents: LCD Endcap Assembly, Type 2, Backlit (1)	\$188.00
<b>Part #</b>	<b>X-10 Cable Assembly for up to 4.5" Door (UA)</b>	<b>List \$ Per</b>
527100	Contents: Cable Assembly, Flex Wall thk. 4.5 (1)	\$103.00
	Ground Contact (1)	
	Tube Retainer (1)	
	Screw - FH 2 - 56 X .188, TORX, UC (1)	
<b>Part #</b>	<b>X-10 Cable Assembly for up to 2.25" Door (UA)</b>	<b>List \$ Per</b>
521011	Contents: Cable Assembly, Flex Wall thk. 2.813 (1)	\$99.00
	Ground Contact (1)	
	Tube Retainer (1)	
	Screw - FH 2 - 56 X.188, TORX, UC (1)	
<b>Part #</b>	<b>X-10 Instruction Pack</b>	<b>List \$ Per</b>
527002	Contents: Change Key (1)	\$34.00
	Mounting Template (1)	
	X-10 Operating Instructions (1)	
	X-10 Installation Instructions (1)	
	X-10 Quick Reference Guide (1)	
<b>Part #</b>	<b>X-10 Change Key</b>	<b>List \$ Per</b>
107061		\$13.00
<b>Part #</b>	<b>X-10 Lock Mounting Kit</b>	<b>List \$ Per</b>
524002	Contents:	\$54.00
	Saw Blade 52 teeth/inch (1)	
	Saw Handle (1)	
	Hexkey, 5/64 Long (1)	
	Tube Deburr Stone (1)	
	Vise Clamp (1)	
	Hub Gauge (1)	
	Lubricant, Tube Lubriplate Grease (1)	
	Screw - PH 8/32 X 5/16 (4)	
	Screw - Case 1/4 - 20 X .38 (4)	
	Screw - Case 1/4 - 20 X .31 (4)	
	Insulator, Tape M85-89 (1)	
	Zebra Connector Housing (1)	
	Zebra Connector, SPL (1)	
	Cable Retainer (3)	
	Spindle Screw - PH 6.32 X .395 (1)	
<b>Part #</b>	<b>X-10 Hub Assembly (GC)</b>	<b>List \$ Per</b>
504067	Contents: Hub Assembly (1)	\$14.00

# X-10 Parts

<b>Part #</b> 504085	<b>X-10 Dial-Retaining Rings (C-Clips)</b> Replacement Clips used w/ Hub (50)	<b>List \$ Per</b> \$104.00
<b>Part #</b> 504068	<b>X-10 Dial (HC)</b> Contents: X-10 Dial (1)	<b>List \$ Per</b> \$26.00
<b>Part #</b> 524004	<b>X-10 4.5" Spindle Assembly with Mounting Screw (EC)</b> Contents: Spindle Assembly, W-THK 4.5 (1)	<b>List \$ Per</b> \$29.00
<b>Part #</b> 104017	<b>X-10 Tube Kit (MA)</b> Contents: Inner Tube 4.5 (1) Outer Tube 4.5 (1)	<b>List \$ Per</b> \$60.00
<b>Part #</b> 9810004	<b>Lubricant</b> Contents: Lubricant (1)	<b>List \$ Per</b> \$1.70
<b>Part #</b> 521000	<b>X-10 Coverion Kit for 10" Thick Door</b> Contents: Spindle w/ screw, Cable Assembly, Tube - Inner, Outer	<b>List \$ Per</b> \$407.00
<b>Part #</b> 521017	<b>X-10 Sealed Lock Case Assembly, Bolt, Tapped (AC)</b> Contents: Lock Case Assembly (1) with 4.5" cable	<b>List \$ Per</b> \$1,373.00
521019	Contents: Lock Case Assembly (1) with 2.813" cable	\$1,369.00
521009	Contents: Lock Case Assembly (1) without cable	\$1,271.00
<b>Part #</b> 507084	<b>X-10 Generator</b> Contents: Generator, Non-Backlit (1)	<b>List \$ Per</b> \$114.00
<b>Part #</b> 504075	<b>X-10 Dial Ring Assembly (no LCD) (DC)</b> Contents: Dial Ring (1) Spindle Tube Retainer (1) Spindle Tube Holder (1) Screw - BH, 4-40 X .156, Comb. Drive (2) Washer, SPL. flat, .185 ID X .360 OD (2)	<b>List \$ Per</b> \$48.00
<b>Part #</b> 507085	<b>X-10 Dial Ring Cover Assembly (CC)</b> Contents: Generator Clutch Assembly, PCB (1) Dial Ring Cover Assembly (1) Screw - PH 8/32 X 5/16 (2) Gear Plate Assembly (1) Screw - SEMS, 6/32 X .313, Plain (3) Gear Drive, 94ET/48P, 15IT/30P (1) Gear, Comb, 14/53T, 48P (1) Screw - PH 4/40 X 5/32 (2) Screw - PH, 4/40 X .375, CRBH, Type 1 (2)	<b>List \$ Per</b> \$176.00

**NOTE: Minimum order amount per shipment is \$100.00 net.**

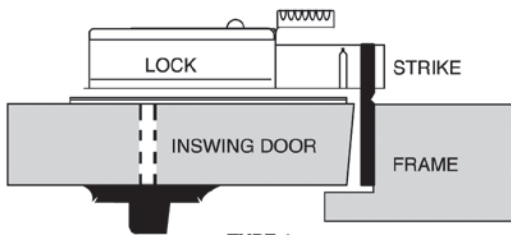
# CDX-10

## Strikes/Plates

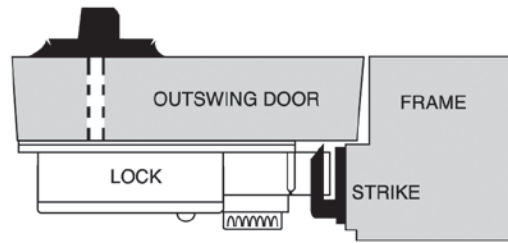
### CDX-10 (FF-L-2890B) APPLICATIONS

Part #	CDX Strike type	List \$ Per
114003	<b>CDX Strike type 1</b> Contents: Strike Type 1 (1)	\$22.00
114004	<b>CDX Strike type 2</b> Contents: Strike Type 2 (1)	\$48.00
114005	<b>CDX Strike type 3</b> Contents: Strike Type 3 (1)	\$42.00
114006	<b>CDX Strike type 9</b> Contents: Strike Type 9 (1)	\$71.00
114024	<b>Mounting Plate</b> Contents: Mounting Plate (1)	\$110.00
115034	<b>Base Plate</b> Contents: Base Plate (Inside Container Door) (1)	\$89.00

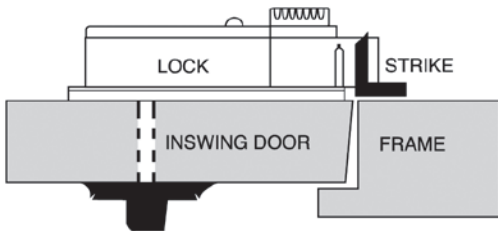
**NOTE: Minimum order amount per shipment is \$100.00 net.**



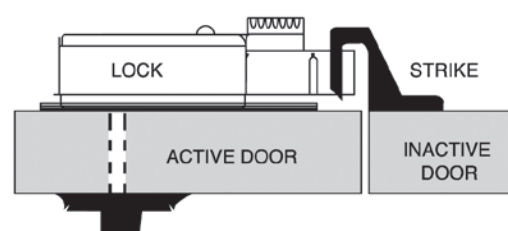
**TYPE 1**  
**Part# 114003**



**TYPE 2**  
**Part# 114004**



**TYPE 3**  
**Part# 114005**



**TYPE 9**  
**Part# 114006**

# Technical Training

<b>Part #</b>	<b>Course Description</b>	<b>Duration</b>	<b>Class Fee</b>	<b>Minimum Class Size</b>
X0910-0900	X-10 Installation/Operation (at Kaba Mas)	1 day	\$275/person	6
X0910-0900	X-10 Installation/Operation (Off-site)	1 day	\$275/person	6

\* Course fee plus expenses

**ALL CLASS FEES ARE NET PRICE EITHER PER DAY OR PERSON**

**X-10 off-site training must be prearranged by Kaba Mas distributor.**

**Note: Expenses are defined as instructor's travel (airfare/mileage), lodging, meals, transportation, and shipping training materials.**

# Product Weights & Measures

## X-10

Single box	4 lbs.	10" x 7 1/4" x 4 1/4"
10-Pack box	40 lbs.	22" x 15" x 11"
6-Pack box	24 lbs.	12 1/2" x 12 1/2" x 12 1/2" (OEM)

## CDX-10

Single box	9 lbs.	12" x 9 1/4" x 6"
5-Pack box	45 lbs. or 63 lbs.	19" x 16" x 12 1/2" (Gov't)

## DKX-10

Single box	25lbs. (DKX) 9 lbs. (CDX)	DKX 5 1/2" x 10 1/2" x 5 1/2" CDX 12" x 9 1/4" x 6"
------------	---------------------------	--

Kaba Mas LLC  
1051 Newtown Pike, Ste. 150  
Lexington KY 40511  
T: 859 479 1329