



Classification: Public

dormakaba TouchGo
Wetzikon, March 2020

dormakaba TouchGo
Opens doors with just a touch
In care and nursing homes

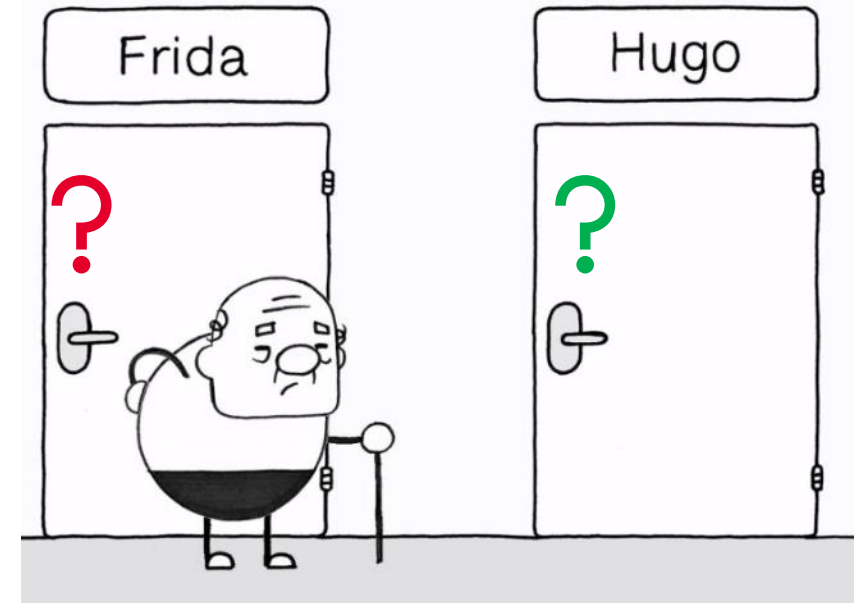
dormakaba 

Customer needs



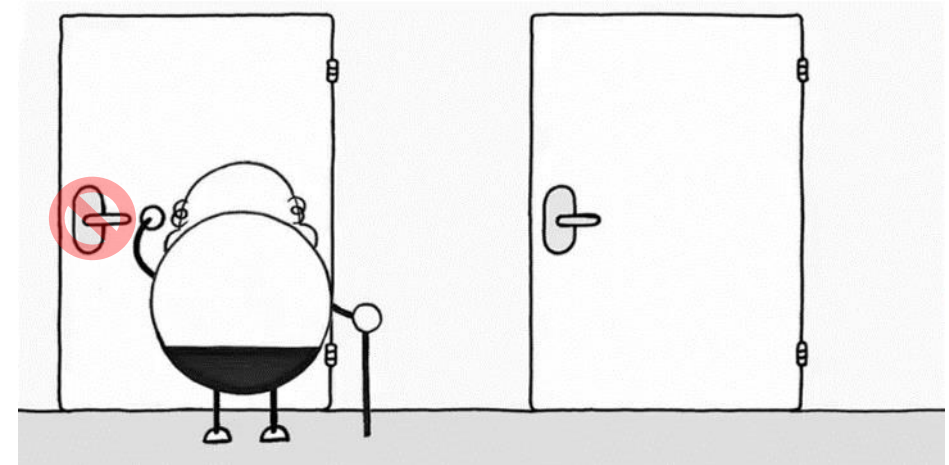
Customer needs (1)

- In addition to their illness, the residents of a nursing and dementia home are often dependent on a walker-rollator, walking stick or wheelchair and have no hand free. They are fully occupied with being able to move around independently, but often this is not possible.
- They often do not recognize their own room and do not find their way around. This means stress for them and the care staff.

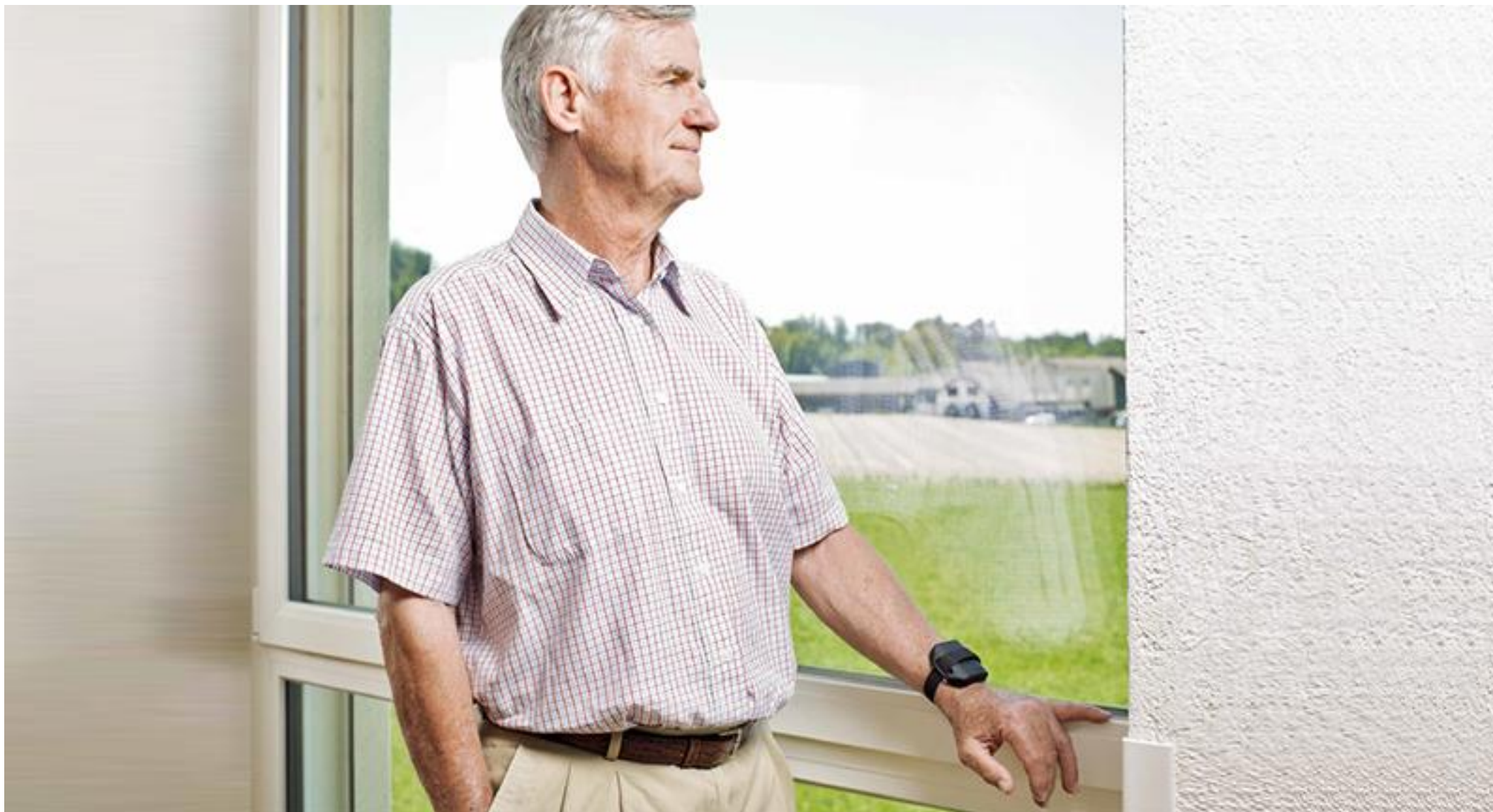


Customer needs (2)

- At night, when it is dark and the residents are in bed, their sleep is disrupted: doors are tried at random – other residents suffering from dementia open the wrong bedroom doors.
- Unfortunately, misunderstandings, theft and mix-ups are part of everyday life. Residents have to cope with their anxieties: fears about their privacy, their security, their identity, and their personal belongings.



TouchGo - the solution



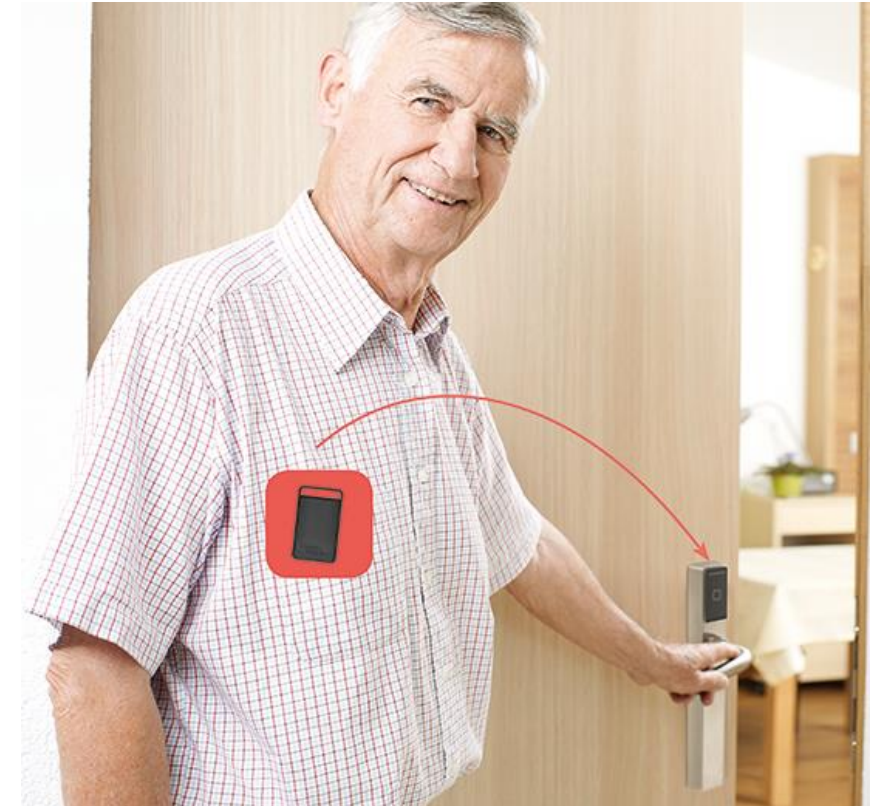
The solution (1)

- Doors can only be opened from outside when valid access rights are given, but they always remain open from the inside. The residents are not locked in.
- The nursing staff has to report fewer incidents and has more time for care. They are relieved in their everyday work - living together is more relaxed.
- All accesses are controlled - and easy to program.



The solution (2)

- TouchGo is based on our RCID (Resistive Capacitive Identification) technology, which uses the body's natural electrostatics to transfer access rights to the door handle.
- The user's access authorization is checked by simply touching the door handle and the door is released in seconds.
- The access medium may be carried up to 5 - 10 cm away from the body, e.g. in a bag, jacket, wheelchair, belt or on the wrist.



TouchGo - the assortment



The range - the E110 line



E110 version

- c-lever pro - high-quality electronic door fitting E110 with TouchGo function
- Up to 100 users can be programmed
- Optical and acoustic signaling (red / green) for «access" or «access denied
- Can be installed on all standard locks, indoor and outdoor
- Selectable transponders: TouchGo key fob in black or white, bracelet or card holder
- Simple on-site programming with the TouchGo programming master transponder

The range - the E310 line

Programming:



E310 version

- c-lever pro - high-quality electronic door fitting E310 with RFID and RCID recognition (hybrid)
- Up to 1000 users can be programmed
- Seamless integration into the dormakaba standalone and online environment
- Can also be integrated into other access systems through RFID
- Easy on-site programming with the programming master or access administration via your dormakaba system software

The c-lever pro electronic door fitting



Facts

- Fits all common mortise locks – both inside and outside areas
- Ideal for doors with increased organizational and safety requirements
- Award-winning design
- Environmental product declaration
EPD: [click here](#) for more



Options

- The option with TouchGo solves a wide range of needs in terms of access for retirement and dementia homes
- Emergency opening
- Increased burglary protection
- Protection against dust and water

More about the c-lever pro: [click here](#)

The c-lever pro fitting - design award winning

Iconic Award

The c-lever pro received the best of best in the category "Product"

German Design Award

The c-lever pro received in the Category "Building and Elements" the Special Award



TouchGo - the programming



Programming (1)

E110: manual programming

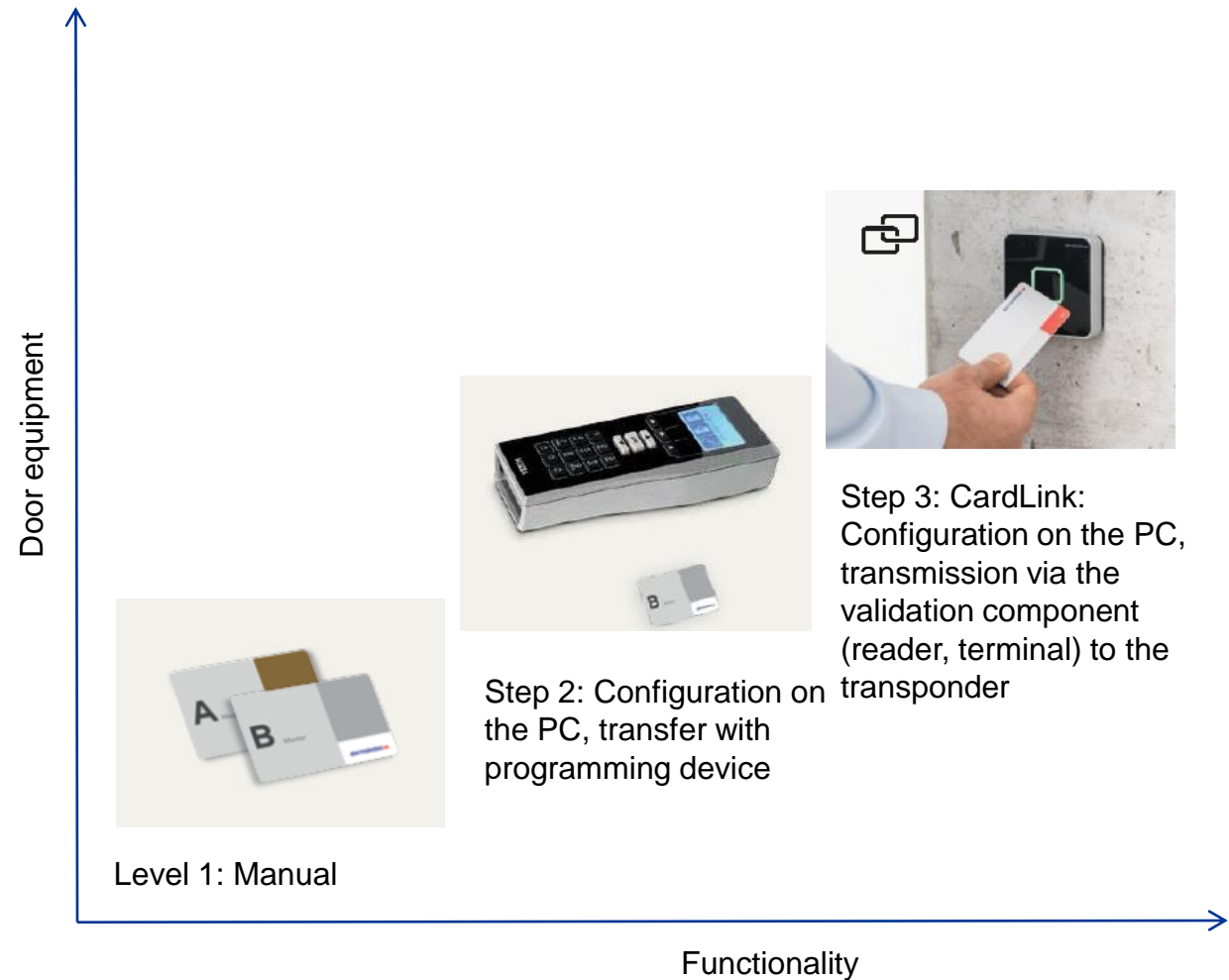
- Quick and easy on-site programming with the master transponder directly at the door
- Practical, as the c-lever pro fitting is a standalone component without external cabling
- No system solution (software) necessary
- For simple installations with few changes in access rights



Programming (2)

E310: automated programming possible

- Step 1: on-site, manual programming with the master transponder directly at the door
- Stage 2: Management via the system software on the PC, media programming with the desktop reader and transfer of the configuration data to the door with the programming device
- Stage 3: PC programming, transmission to the update reader, which passes on the new access data to the transponders when they are held up to the update-reader; the transponders pass the data on to the c-lever pro when held to the door.



Programming (3)

Our following software systems can be used for programming TouchGo:

- evolo Manager - KEM
- exos 9300
- MATRIX Pro
- MATRIX One
- EACM
- b-comm



TouchGo - Advantages at a glance



TouchGo - the advantages for our users



- Free hands, the hand is the key
- More security
- More privacy
- Selective access - helps the organisation
- Uncomplicated to operate
- More satisfaction and less stress for residents, nursing staff and home management

TouchGo - the advantages for Care Home and Facility Managers



- Flexibility - a solution for practically every door
- Practical - important rooms can be equipped with TouchGo, while for other doors a solution from the evolo range can be selected, for example for the main entrance, therapy or staff rooms, medicine cabinets, etc.
- You keep an overview of the accesses
- More time for the patients
- Easy to administer

TouchGo - the advantages of the product

The c-lever pro with TouchGo function is compatible with the entire evol range

- Can be integrated - whether standalone, wireless or online operation, even mechanical components can be integrated and administered
- Wireless - the components run on battery, so there is no need for extensive cabling
- Expandable - new components can be added at a later stage
- Scalable - your system can grow or change as needed
- Flexibility - a solution for practically every door
- High safety and a high quality product
- The proven dormakaba service & support



TouchGo - Your contact



Would you also like to get to know dormakaba TouchGo?

We look forward to hearing from you.

Your dormakaba contact partner is available for your questions.

For further information see:

<https://www.dormakaba.com/touchgo-care-en/contact>

Thank you very much.

dormakaba AG - Mühlebühlstrasse 23 – 8620 Wetzikon
Switzerland

dormakaba 

Disclaimer

This communication contains certain forward-looking statements including, but not limited to, those using the words “believes”, “assumes”, “expects” or formulations of a similar kind. Such forward-looking statements are made on the basis of assumptions and expectations that the company believes to be reasonable at this time, but may prove to be erroneous. Undue reliance should not be placed on such statements because, by their nature, they are subject to known and unknown risks, uncertainties and other factors which could lead to substantial differences between the actual future results, the financial situation, the development or performance of the company or the Group and those either expressed or implied by such statements. Such factors include, but are not limited to:

the general economic conditions / competition from other companies / the effects and risks of new technologies / the company’s continuing capital requirements / financing costs / delays in the integration of the merger or acquisitions / changes in the operating expenses / currency and raw material price fluctuations / the company’s ability to recruit and retain / qualified employees / political risks in countries where the company operates / changes in applicable law / and other factors identified in this communication

Should one or more of these risks, uncertainties or other factors materialize, or should any underlying assumption or expectation prove incorrect, actual outcomes may vary substantially from those indicated. In view of these risks, uncertainties or other factors, readers are cautioned not to place undue reliance on such forward-looking statements. Except as required by applicable law or regulation, the company accepts no obligation to continue to report or update such forward-looking statements or adjust them to future events or developments. It should be noted that past performance is not a guide to future performance. Please also note that interim results are not necessarily indicative of the full-year results. Persons requiring advice should consult an independent adviser.

This communication does not constitute an offer or an invitation for the sale or purchase of securities in any jurisdiction.

dormakaba®, dorma+kaba®, Kaba®, Dorma®, Ilco®, La Gard®, LEGIC®, Silca®, SAFLOK®, BEST®, phi® etc. are registered trademarks of the dormakaba Group. Due to country-specific constraints or marketing considerations, some of the dormakaba Group products and systems may not be available in every market.