

- NOTES:
 1- USE DIMENSIONS FROM DIAGRAM A TABLE TO ADJUST BACK-SET POSITION ACCORDING TO LOW AND HIGH BEVEL DOOR EDGE.
 2- DIMENSIONS ARE SYMMETRICAL ABOUT ϕ UNLESS OTHERWISE NOTED.
 3- REFER TO SPECIFIC TOLERANCES TABLE FOR DIMENSIONS MARKED WITH #
 4- DEPTH MEASURED FROM THE FRONT OF DOOR, ON THE CENTER LINE ϕ .
 5- THIS HOLE ONLY FOR LOCK MODELS WITH CABLE WIRES THROUGH THE DOOR.

SPECIFIC TOLERANCES	
DISTANCES	$\pm .030$ [$\pm .75$]
HOLES ϕ	$\phi \pm .010$ [$\pm .25$]
DIMS MARKED #	$+ .030 / - .000$ [$+ .75 / - .00$]

REVISIONS					
REV	ECN	DESCRIPTION	FAIT PAR MADE BY	VERIF PAR CHK'D BY	DATE
1	15518	ORIGINAL RELEASE	P.P.	C.D.	30SE 2015
2	16312	ADDED E-PLEX 7900 TO THE TITLE BLOCK	C.B.	C.D.	20SE 2017

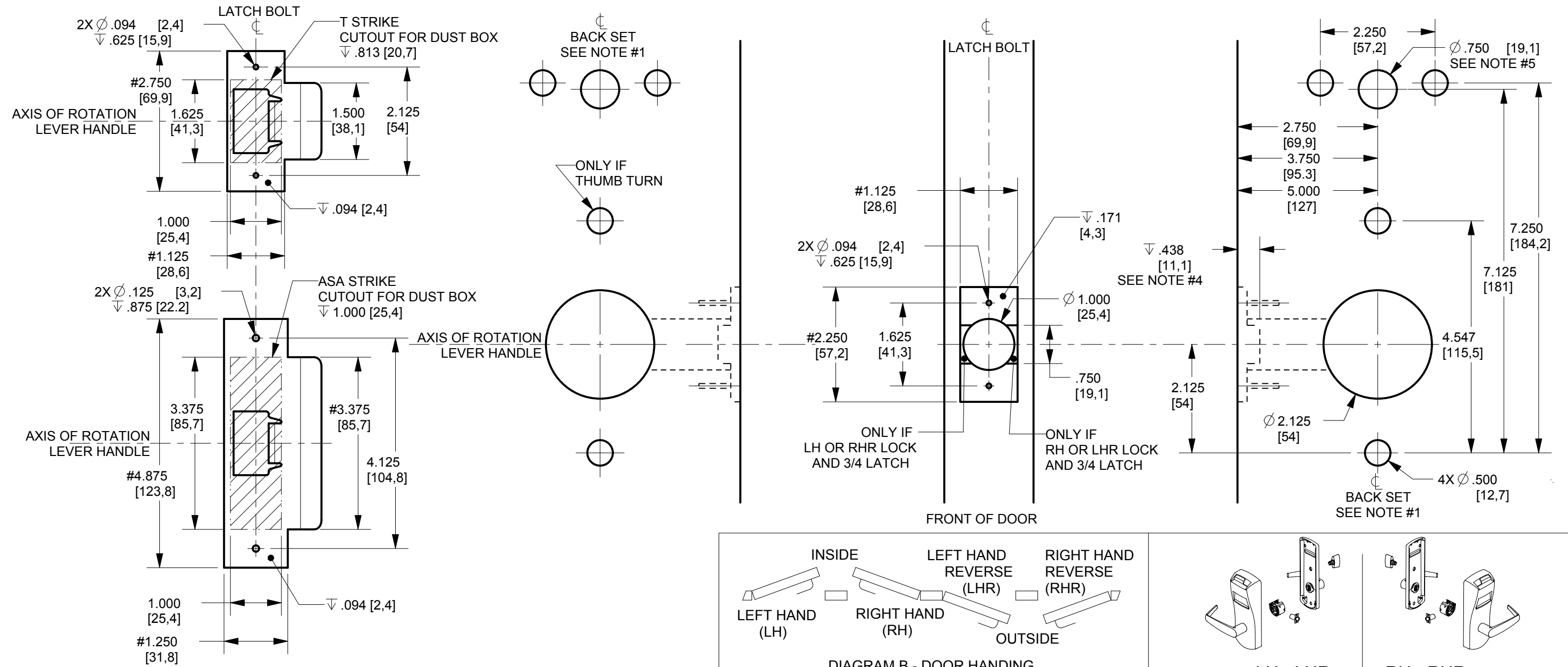
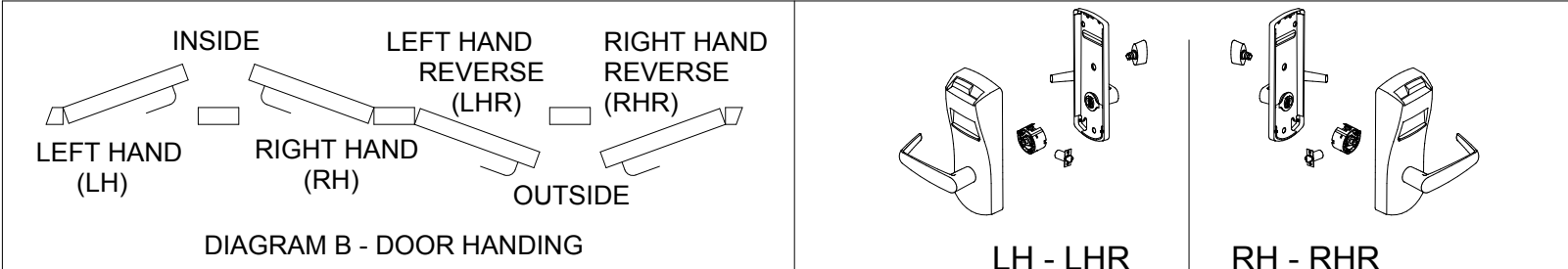


DIAGRAM A - BACK SET AJUSTEMENT FOR 3 BEVEL DOOR

DOOR THICKNESS DIMENSION X	BACK SET AJUSTEMENT DIMENSION Y
1.25 (31,8mm)	.032 (0,81mm)
1.50 (38,1mm)	.039 (1,00mm)
1.75 (44,5mm)	.046 (1,17mm)
2.00 (50,8mm)	.052 (1,32mm)
2.25 (57,2mm)	.059 (1,50mm)
2.50 (63,5mm)	.065 (1,65mm)
2.75 (69,9mm)	.072 (1,83mm)

Diagram A shows a cross-section of a door edge with a 2.750 STANDARD BACK-SET and a REFERENCE line. Dimensions X and Y are indicated for the bevel edge.



LE MATERIAU ET LA FINITION DE CETTE PIECE DOIVENT RESPECTER LES DIRECTIVES ENVIRONNEMENTALES; REFERENCE AU STANDARD D'INGENIERIE DE KABA ES-073.
 MATERIAL AND FINISH OF THIS PART TO COMPLY WITH ENVIRONMENTAL DIRECTIVES; REFERENCE TO KABA'S ENGINEERING STANDARD ES-073.

	7301, Decarie Boul Montreal, QC Canada H4P 2G7 www.kaba-ilco.com	
	Q660,660i,760,770,790,76,79,E-PLEX 2000, POWER-PLEX 2000 & E-PLEX 7900 LOCK SERIES DOOR PREPARATION DRAWING CYLINDRICAL UNIT - 2-3/4" BACKSET	
DIMENSIONING AND TOLERANCING AS PER AMERICAN SOCIETY OF MECH ENGINEERS ASME Y14.5-1994	DIMENSIONS CRITIQUES CRITICAL DIMENSIONS PROJECTION 3iem ANGLE THIRD ANGLE PROJECTION NE PAS MESURER SUR LE DESSIN DO NOT SCALE DRAWING	SANS AUTRES SPECIFICATIONS, LES DIMENSIONS SONT POUCES (millimètres) ET S'APPLIQUENT APRES FINITION. UNLESS OTHERWISE SPECIFIED, DIMENSIONS ARE INCHES (millimeters) AND APPLY AFTER FINISH.
CE DOCUMENT EST LA PROPRIETE STRICTE DE KABA. LES DONNEES QUI IL CONTIENT NE PEUVENT ETRE COPIEES OU DIVULGUEES A UNE TIERCE PARTIE SANS LE CONSENTEMENT ECRIT DE KABA. CE DOCUMENT DEVRA ETRE RETOURNE SUR DEMANDE A KABA. THIS DOCUMENT IS PROPERTY OF KABA. THE DATA CONTAINED IS PROPRIETARY AND SHALL NOT BE COPIED OR DISCLOSED TO A THIRD PARTY WITHOUT WRITTEN CONSENT OF KABA. THIS DOCUMENT WILL BE RETURNED TO KABA UPON DEMAND. UNE VERSION FRANCAISE DE CE DOCUMENT EST DISPONIBLE SUR DEMANDE.	TOLERANCES: THIS DRAWING HAS SPECIFIC TOLERANCES, SEE NOTES CE DESSIN A DES TOLERANCES SPECIFIQUES, VOIR LES NOTES	DRESSINE PAR: P.PRIEUR 05N001 DRAWN BY: CONCU PAR: C.DOUCET 05N001 DESIGNED BY: VERIFIE PAR: - VERIFIED BY: APPROUVE PAR: - APPROVED BY: MATERIAU / MATERIAL: NOT APPLICABLE FINITION / FINISH: NOT APPLICABLE TRAITEMENT THERMIQUE / HEAT TREATMENT: NOT APPLICABLE
B	IP-514989 SEE VIEWS	IP-514989 PG SHT 1 DE OF 1