

- NOTES:
 1- USE DIMENSIONS FROM DIAGRAM A TABLE TO ADJUST BACK-SET POSITION ACCORDING TO LOW AND HIGH BEVEL DOOR EDGE.
 2- DIMENSIONS ARE SYMMETRICAL ABOUT CL UNLESS OTHERWISE NOTED.
 3- REFER TO SPECIFIC TOLERANCES TABLE FOR DIMENSIONS MARKED WITH #
 4- DEPTH MEASURED FROM THE FRONT OF DOOR, ON THE CENTER LINE CL .
 5- THIS HOLE ONLY FOR LOCK MODELS WITH CABLE WIRES THROUGH THE DOOR.

SPECIFIC TOLERANCES	
DISTANCES	$\pm .030$ [$\pm .75$]
HOLES \varnothing	$\varnothing \pm .010$ [$\pm .25$]
DIMS MARKED #	$+ .030/- .000$ [$+ .75/- .00$]

REVISIONS					
REV	ECN	DESCRIPTION	FAIT PAR MADE BY	VERIF PAR CHK'D BY	DATE
1	15518	ORIGINAL RELEASE	Z.S.	C.D.	30SE 2015
2	16312	ADDED E-PLEX 7900 TO THE TITLE BLOCK	C.B.	C.D.	20SE 2017

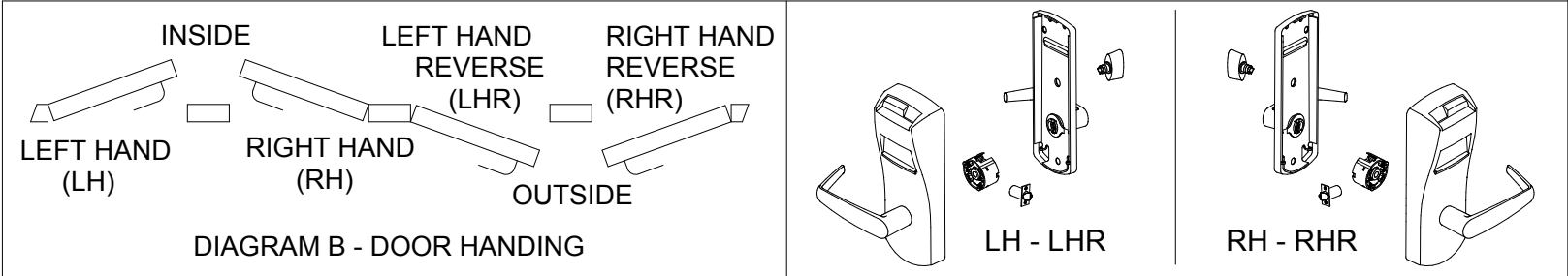
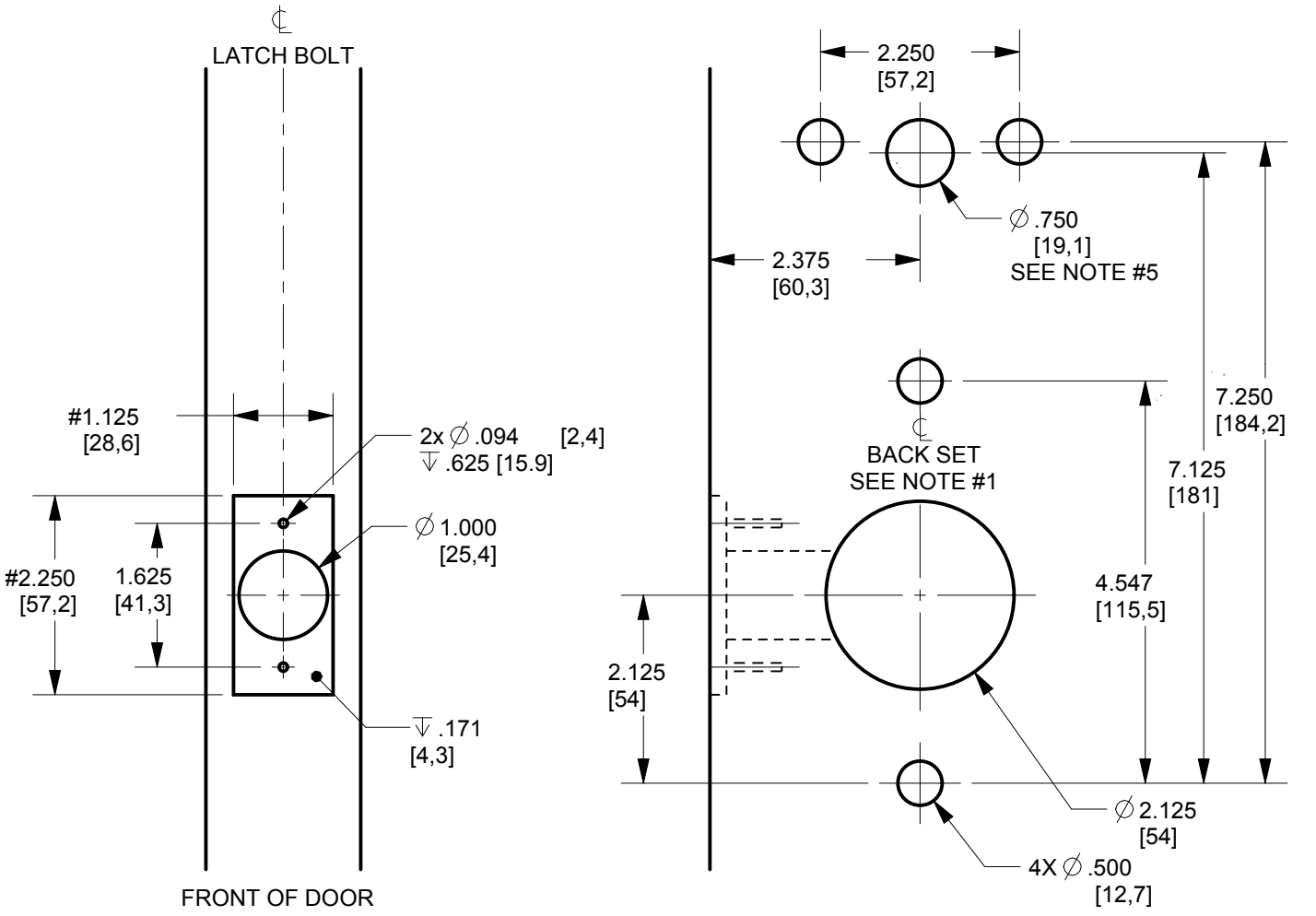
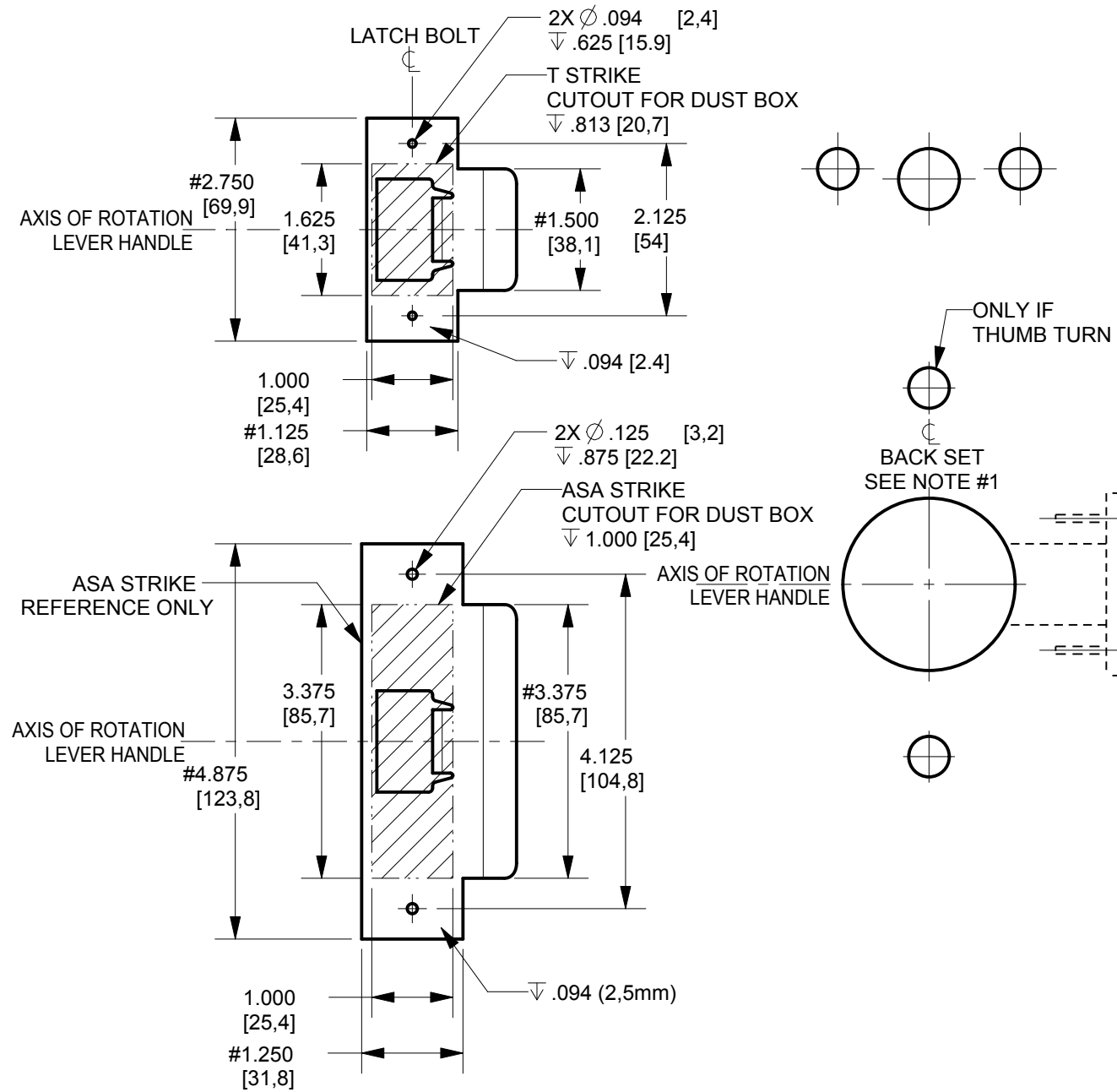


DIAGRAM A - BACK SET AJUSTEMENT FOR 3 BEVEL DOOR

DOOR THICKNESS DIMENSION X	BACK SET AJUSTEMENT DIMENSION Y
1.25 (31,8mm)	.032 (0,81mm)
1.50 (38,1mm)	.039 (1,00mm)
1.75 (44,5mm)	.046 (1,17mm)
2.00 (50,8mm)	.052 (1,32mm)
2.25 (57,2mm)	.059 (1,50mm)
2.50 (63,5mm)	.065 (1,65mm)
2.75 (69,9mm)	.072 (1,83mm)

- SYMBOLS:
 ∇ DEEP
 \square COUNTERBORE
 CL CENTER LINE
 \varnothing DIAMETER
 \triangleleft NOT TO SCALE

LE MATERIAU ET LA FINITION DE CETTE PIECE DOIVENT RESPECTER LES DIRECTIVES ENVIRONNEMENTALES; REFERENCE AU STANDARD D'INGENIERIE DE KABA ES-073.
 MATERIAL AND FINISH OF THIS PART TO COMPLY WITH ENVIRONMENTAL DIRECTIVES; REFERENCE TO KABA'S ENGINEERING STANDARD ES-073.

XXX	DIMENSIONS CRITIQUES CRITICAL DIMENSIONS	SANS AUTRES SPECIFICATIONS, LES DIMENSIONS SONT POUCES (millimètres) ET S'APPLIQUENT APRES FINITION. UNLESS OTHERWISE SPECIFIED, DIMENSIONS ARE INCHES (millimeters) AND APPLY AFTER FINISH.	DESSIN PAR: DRAWN BY: P.PRIEUR	13AU04		7301, Decarie Boul Montreal, QC Canada H4P 2G7 www.kaba-ilco.com
	PROJECTION 3iem ANGLE THIRD ANGLE PROJECTION		CONCU PAR: DESIGNED BY: A.TOLEDANO	13AU04		
	NE PAS MESURER SUR LE DESSIN DO NOT SCALE DRAWING		VERIFIE PAR: VERIFIED BY: -	-	660,660i,760,770,790,76,79,E-PLEX 2000 POWER-PLEX 2000 & E-PLEX 7900 LOCK SERIES DOOR PREPARATION DRAWING CYLINDRICAL UNIT - 2-3/8" BACKSET	
	DIMENSIONING AND TOLERANCING AS PER AMERICAN SOCIETY OF MECH ENGINEERS ASME Y14.5-1994	TOLERANCES:	APPROUVE PAR: APPROVED BY: -	-	FORMAT NO PIECE / PART NO: NO DESSIN / DRAWING NO:	
	CE DOCUMENT EST LA PROPRIETE STRICTE DE KABA. LES DONNEES QUIIL CONTIENT NE PEUVENT ETRE COPIEES OU DIVULGUEES A UNE TIERCE PARTIE SANS LE CONSENTEMENT ECRIT DE KABA. CE DOCUMENT DEVRA ETRE RETOURNE SUR DEMANDE A KABA.	THIS DRAWING HAS SPECIFIC TOLERANCES, SEE NOTES	MATERIAU / MATERIAL		B ECH SCALE SEE VIEWS PG SHT 1 DE OF 1	
	THIS DOCUMENT IS PROPERTY OF KABA. THE DATA CONTAINED IS PROPRIETARY AND SHALL NOT BE COPIED OR DISCLOSED TO A THIRD PARTY WITHOUT WRITTEN CONSENT OF KABA. THIS DOCUMENT WILL BE RETURNED TO KABA UPON DEMAND.	CE DESSIN A DES TOLERANCES SPECIFIQUES, VOIR LES NOTES	FINITION / FINISH			
	UNE VERSION FRANCAISE DE CE DOCUMENT EST DISPONIBLE SUR DEMANDE.		TRAITEMENT THERMIQUE / HEAT TREATMENT			