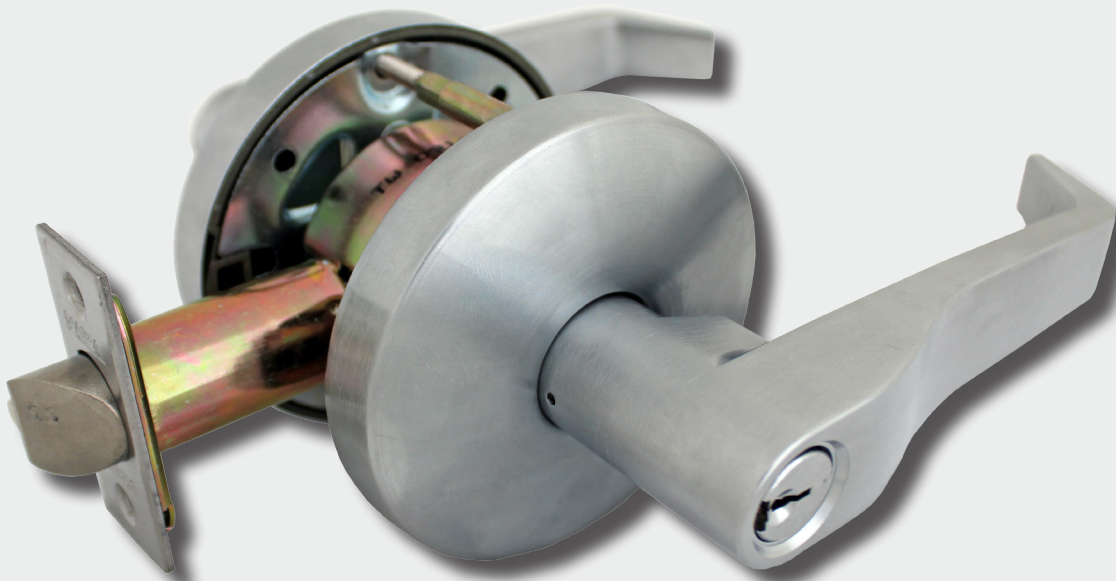


KL Series, with A Lever *key in lever*



The Kaba KL Series has had its lever design enhanced to now meet the requirements of AS1428.1 Design for Access and Mobility. The new KL Series with A Lever provides a stylish and practical solution for projects needing to comply with this standard.

The Kaba KL Series is supplied with an 85mm rose and 70mm backset as standard.

Fire Rating

The KL Series key in lever lock is fire rated and complies with Australian Standard AS1905-1-2005 Part 1.

Door Thickness

KL Series locks are suitable for doors 35mm minimum to 46mm maximum thickness.

Backset

Standard 70mm (60mm available in selected functions), 95mm or 127mm extensions available as accessory.

Keying

Supplied in C4 6 pin, individually keyed with 2 keys per lock. Suitable for master keying and restricted systems.

Finishes

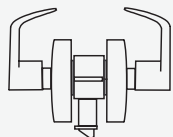
Satin Chrome Plate SCP

Standard Features

- Non-handed field reversible for left or right handed doors
- Meets requirements of AS1428.1
- ANSI Grade 2
- Fire Rated
- 52mm cylindrical chassis
- 85mm diameter rose
- 13mm stainless steel latchbolt
- Heavy duty spring return
- Anti-twist stud fixing
- Rebate kit available in 13mm
- Clutching option available on function KL53 and KL70



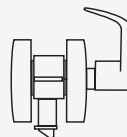
KL Series, with A Lever functions



KL10 PASSAGE SET

OUTSIDE
Lever is always free.

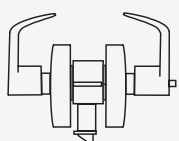
INSIDE
Lever is always free for immediate exit.



KL25 EXIT LOCK

OUTSIDE
Blank plate outside.

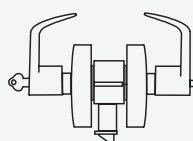
INSIDE
Lever is always free for immediate exit.



KL40 PRIVACY SET

OUTSIDE
Opened by lever when unlocked. Pushing button on inner lever locks the outer lever. Screwdriver or similar tool will release lever in case of emergency. "Kick-off" is a standard feature.

INSIDE
Lever is always free for immediate exit.

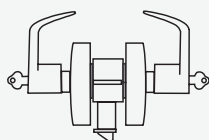


KL53 ENTRANCE SET

OUTSIDE
Pushing button on inner lever locks outer lever. Turning key releases button leaving lever unlocked. Secondary feature: Rotating turn button to horizontal position locks outer lever. Key will now only retract latchbolt.

VANDAL RESISTANT CLUTCHING LEVER (OPTIONAL).

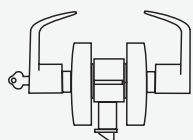
INSIDE
Lever is always free for immediate exit.



KL66 DOUBLE CYLINDER SET

OUTSIDE
Full turn with key in locks or unlocks both levers.

INSIDE
Full turn with key in locks or unlocks both levers.

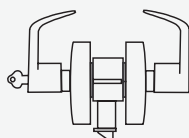


KL70 CLASSROOM SET

OUTSIDE
Full turn with key in outer lever locks or unlocks outer lever only.

VANDAL RESISTANT CLUTCHING LEVER (OPTIONAL).

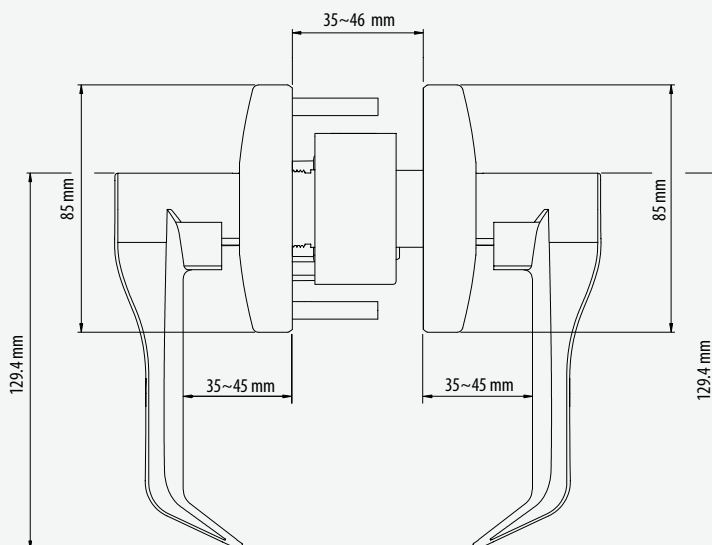
INSIDE
Lever is always free for immediate exit.



KL80 STOREROOM SET

OUTSIDE
Lever is always fixed. Key retracts latchbolt only.

INSIDE
Lever is always free for immediate exit.



Product Code

Description

KL10ASCP70	KL Series Passage set, A Lever - 70mm SCP
KL25ASCP70	KL Series Exit lock, A Lever- 70mm SCP
KL40ASCP70	KL Series Privacy set, A Lever - 70mm SCP
KL53ASCP70	KL Series Entrance set, A Lever - 70mm SCP
KL53CASC70	KL Series Entrance set, Clutching A Lever - 70mm SCP
KL66ASCP70	KL Series Double Cylinder set, A Lever - 70mm SCP
KL70ASCP70	KL Series Classroom set, A Lever - 70mm SCP
KL70CASC70	KL Series Classroom set, Clutching A Lever - 70mm SCP
KL80ASCP70	KL Series Storeroom set, A Lever - 70mm SCP