



Axessor CIT

Ultimate flexibility

Axessor® CIT is the ideal safe lock for security on all safes, ATM's and other security products. Combining all the essential features of a secure multi user standalone safe lock, a networked lock and One Time Code lock, the Axessor CIT offers the greatest versatility in its portfolio. The Axessor CIT caters and adapts to your business requirements today and in the future; allowing customers to use the functions they require now and activate others later as your business and security requirements change.

One Time Code

The one time code (OTC) modes offers two options, the integrated ICS - Interactive Code System algorithm as well as the simple OTC - One Time Combination function. Operation in ICS or OTC mode is completely key-less. The lock is virtually linked to the management software by the proprietary algorithm and the opening and closing codes exchanged between the lock and the software. The more sophisticated and patented ICS

mode includes a programmable code expiry time, duress notification function and power level monitoring for battery and external power supply.

Multi-mode operation

If 1 + 1 equals more than 2, then this is surely true for parallel mode in the Axessor CIT. Depending on the requirements, the normal bank mode operation can be backed up by an emergency opening using one time code operation e.g. while lock is in a time locking period. Other combinations of how the different operating modes can be combined are possible. Lock opening can still be restricted to one time code or bank mode operation only.

Standard (Bank) Mode

The standard mode allows the lock to operate either as a standalone multiple user lock offering an expanded scope of features or a networked safe lock at any time later by adding the optional ebox.

Advantages at a glance:

- Modular and flexible
- Multiple operating modes; Standalone mode, Net-workable, OTC One Time Code.
- Patented Motorised lock with automatic locking
- Ergonomic and robust keypad
- AES-256 Encryption
- Dynamic User and Time Functions
- Comprehensive code management features
- Approvals; EN1300 B, VDS Class 2, UL and CNPP a2p pending.

dormakaba Australia
 Head Office
 46-52 Abbott Road
 Hallam VIC 3803
 T: 1800 675 411
info.au@dormakaba.com
www.dormakaba.com.au

dormakaba New Zealand
 Head Office
 Building P, 61-69 Patiki Road
 Avondale, Auckland 1026
 T: 0800 436 762
info.nz@dormakaba.com
www.dormakaba.co.nz

Software

AS 280 installation software

Allows the network settings to be configured in the Axessor and is carried out via the USB connector on the input unit. The software is protected by a USB dongle and password.

AS 283 SDK software development package

Enables custom applications

AS 284 management/programming software

Supports batch programming and flexible authorisations, allows the software to efficiently manage networked locks ranging from a few to hundreds

AS274 OTC management software

Supports One Time Code Management - Multi-Client server software

Network and access security dongle - password protected

One Time Codes	Yes
Network capable	Yes
Master code	1, can / cannot open Time lock interruption
Manager codes	4, changeable authorisation
User codes	36, four groups
Courier code	1, open or time delay override
Special codes	One time codes for ICS and OTC modes, interior compartment code, time code, one shot code, locking and unlocking code
Dual Mode	Yes, any two codes, same or different user group codes
Weekly locking periods	35
Holiday locking periods	22
Time lock interruption	Yes, 8 programmable
Time delays	8, two per group
Time-dependent functions	3 for group 1 and 2
Non-return time delay	Yes
Selectable display for time delay counting	Yes
Local connection	USB
Event memory	10 000 entries

Ideal solution for:

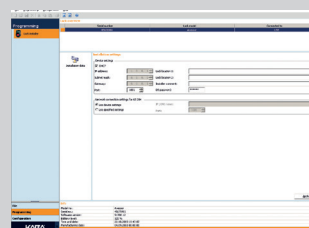
- Banks
- Cash in transit
- Retail stores



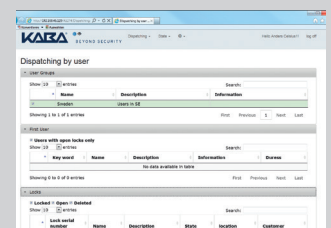
Axessor CIT lock with ebox unit



Multi-mode operation
- Bank and CIT modes



AS284 Lock management software



AS274 One Time Code management software