

The branch groove is also a registered brand mark.

Secured by Design



Police Preferred Specification

pextra+ Even more protection

In the pextra+ lock cylinder system, key security (key and cylinder are patented) is significantly increased by a key profile produced with a special milling procedure which, greatly hinders manipulation. pextra+ is the premium lock cylinder system for serrated keys and is suitable for sophisticated master key systems with maximum security requirements.

Function

- A specially designed keyway in the cylinder has tumbler pin pairs arranged both vertically and horizontally, and these must form a positive fit with the key to reach the shear plane required for opening.
- Burglary protection is significantly increased through the use of hardened elements and drilling protection pins.
- Horizontally arranged locking elements and an overlapping profile increase keying code protection significantly.
- The special centering pin prevents the cylinder from being opened by the bumping method (certified).

Profile and Active Pin

The new, improved and patented branch groove is manufactured on CNC controlled machine tools for highest accuracy. The branch groove cannot be copied on conventional key milling machines. The optional active probe (blocking) pin verifies the presence of the branch groove in the key. If the original branch groove is not milled on the key, the blocking pin prevents the key from being completely turned in the lock cylinder in both directions.

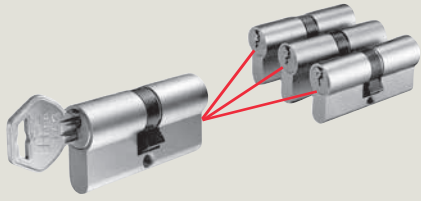
Flexibility

pextra+ is available in Euro profile as well as in Nordic, Union and Australian oval profiles. The pextra+ system can be used all types of mechanical locks enabling true master key systems for all enclosures and devices on a site.

Your advantages at a glance

- Double, single and thumbturn profile cylinders with 5, 6 and 7 pins
- Full range of cylinder locks for furniture, key switches, elevator control, padlocks, camlocks and many more
- All cylinder types can be integrated into master key systems
- Profile families for flexible master key system capacity
- International certifications
- Patent protection until 2032
- Protection against the bumping method
- Key blanks are not available in commercial trade
- Replacement keys available only from dormakaba or authorised dealers
- Dealer profiles are available for authorised partners
- Authorised dealers are trained to pin cylinders and produce replacement keys locally
- Personalised key coinage for authorised dealers
- Security card for proof of ownership for duplicate keys
- TrendKey and metal clip versions available
- Coloured key clips for organisation
- Transponder clip for Kaba digital and electronic access systems
- OEM cylinders available on request

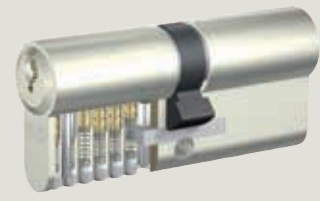
More than mechanical security



The self changing or 1,2,3 system (SUZ) changes the keying in the cylinder by simply using the next key. Lost keys can be 'locked out' without changing the lock cylinder. pextra+ has a unique, wide range of special function options that sets pextra+ in a class of its own.



The key override system (BSZ) is ideal for situations where access is required if a key is inserted in the cylinder on either side. Perfect for nursing homes or schools.



Increased pulling protection (LAM) with reinforcement of the cylinder housing by steel shims, meets the requirements of EN1303 Attack Resistance Grade 2. "LAM" Cylinders offer even more protection against burglary by tearing the cylinder out of the lock.

pextra+ cylinders can do more than just lock doors

dormakaba pextra+ lock cylinders are available with some 20 additional special functions which provide additional security and convenience for a wide range of applications.

Special functions at a glance

- Additional picking protection
- Barrel pulling protection
- Cylinder blind on one side
- Key override from both sides
- Cam with relative movement
- Freewheel cam for gear operated and panic locks
- Emergency key override system
- Cylinder with occupied indicator
- Housing reinforced with steel shims against pulling for EN1303 attack resistance grade 2
- Personnel key
- Shear break-off against snapping
- Side locking elements
- Self changeable cylinder with one or two change keys
- Weather protection cap against filth and moisture
- Sea water resistant barrel
- Wear resistant barrel
- Cogwheel cams with 10 or 18 teeth

Mechanical cylinders for all applications

Cylinders are available in many profiles and lock types which are available in serial and master key system cylinders.

- Euro profile double, single and thumbturn cylinders
- Nordic oval profile cylinders
- Union oval profile cylinders
- Australian oval profile cylinders
- Rim cylinders for surface mounted door locks
- Screw-in cylinders
- Furniture and cabinet locks
- Camlocks
- Key switch cylinders
- Elevator control cylinders
- Padlocks
- Bible cylinders
- Portal double and single cylinders
- Window and door handles
- Key deposits and key storage

International Certificates

- EN1303 Key Related Security Grade 4 for cylinders with 5 pins; Grade 6 for cylinders with 5 pins with the optional blocking pin and cylinders with 6 and 7 pins
- EN1303 Attack Resistance Grade 2 with appropriate door furniture or steel reinforcement shims
- DIN18252 grade 71 for 5 pins or grade 82 for 6 and 7 pin cylinders
- VdS B, BZ and master key systems for 5 and 6 pin cylinders

Subject to changes without prior notice. ©2020 dormakaba. Date 01/2020

Any questions? We would be happy to assist you and look forward to hearing from you.