

Dust and Weather Protection Cap SSW, for Europrofile Cylinders



Application:

The dust and weather cap protects the cylinder insert from filth and moisture penetration into cylinders subject to adverse weather conditions. The cover is pushed apart when inserting the key into the cylinder springs back in place over the keyway after the key has been retracted.

Specification:

The cover is made of brass and is chemically nickel plated
 Only available for Europrofile cylinders
 Can be supplied on both sides of double cylinders
 May be used with security door furniture without anti-pulling rosettes.

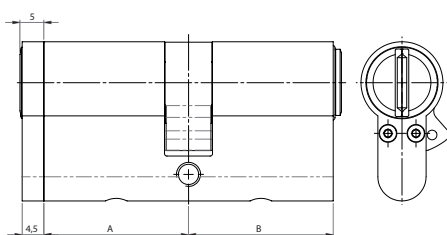
Please note:

- In the order code please specify which side is to be equipped with the cap.
- The special emergency key ZSL.GF.AK840 is required for cylinders equipped with the dust and weather cap.
- It is recommended to remove the cap when using the change key „U“ for the construction key systems BAZ and BAZ3.
- Round key bow type RR cannot be used with this option.

Available for these Systems:

Premier Systems:	6 Kaba penta	7 Kaba quattro pluS	12 Kaba gemini pluS
Patent expired systems	4 Kaba quattro S	2 Kaba gemini S	
Old systems	3 Kaba quattro ¹⁾	1 Kaba gemini ¹⁾	
Dealer systems	5 Kaba experT ²⁾	19 Kaba maTriX ²⁾	
Old dealer system		9 Kaba gemini T ²⁾	

Lengths Available for all standard lengths
 The dust cap itself is 4.5 mm long



Available for these Cylinder Types:			
Europrofile Cylinders			
DZ	Double cylinder	DKZ	Thumbturn double cylinder
DZ25	Double cylinder short	DKZ25	Thumbturn double cylinder short
HZ	Single cylinder		

Available with these cylinder function options:					
BAZ	Construction key	BAZ3	Construction key 3	GF.AK840	Special emergency key
DF	Duplo function		Special Cams	KT	Electrical contact pin
FZG	Freewheel cam for gear operated (panic) locks			BL	Blind on one side
RB	Relative cam movement				

Available with these cylinder security options:				
DIN.ZS	DIN18252 certified: pulling protection		DIN	Drilling protection
VDSB.ZS	VdS certified: Pulling and drilling protection		VDSB	Drilling protection
LAM	Pulling protection with steel shims in housing		ST	Steel housing

Order Code System

System Code.Cylinder Type.Length(function)+Length(function).Surface finish.Option

Example:

6.DZ.30SSW+40.NI = penta.double cylinder.30 weather cap+40.nickel plated

Please note that certain options, finishes and dimensions may be subject to extended factory lead times. Please contact our office via email on sales.uk@kaba.com or telephone (0) 870 000 5625.

¹⁾ Kaba gemini and Kaba quattro are only offered for existing master key systems.

²⁾ Kaba experT, Kaba maTriX and Kaba gemini T are only sold to authorized dealers.