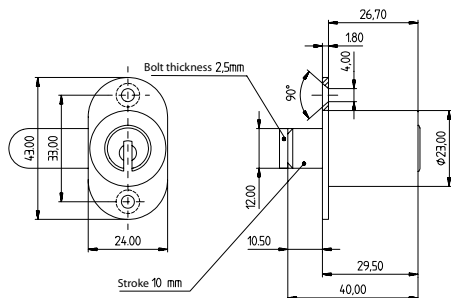


Push cylinder special configurations

DRZ.75-4-020, GTS.75-4-020



Specification:

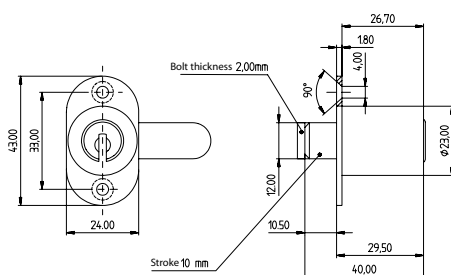
Configuration for Svboda office furniture:
Like the standard configuration, but with a 2.5mm thick cam
("Svboda" cam designation)
Figure shows a right hinged door, cam drawing 81-4-029

Order Code System

System Code.Cylinder.Type.finish.Option.Hinge side

Example:

6.DRZ.74-4-020.NI.SVOBODA.RE = penta.push cylinder.74-4-020.nickel plated.Svboda style cam.right hinges



Specification:

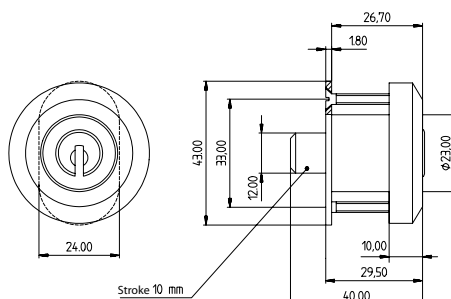
Configuration for Hali and Bene office furniture
Like the standard configuration, but with a cam 2 mm thick
("Hali" cam designation)
Figure show a left hinged door, cam drawing 81-4-029

Order Code System

System Code.Cylinder.Type.finish.Option.Hinge side

Example:

6.DRZ.74-4-020.NI.HALI.LI = penta.push cylinder.74-4-020.nickel plated.Hali/Bene style cam.left hinges



Specification:

Glass door configuration, Type GTS
Lock cylinder as in the standard configuration, but assembled.

Specification:

Housing supplied in solid natural brass with nickel plating
Rosette 86-4-008
Connection screw M4x24 mm

Order Code System

System Code.Cylinder.Type.finish.

Example:

6.GTS.74-4-020.NI = penta.glass door cylinder.74-4-020.nickel plated

Please note that certain options, finishes and dimensions may be subject to extended factory lead times. Please contact our office via email on sales.uk@kaba.com or telephone (0) 870 000 5625.

¹⁾ Kaba gemini and Kaba quattro are only offered for existing master key systems.

²⁾ Kaba expert, Kaba maTriX and Kaba gemini T are only sold to authorized dealers.