

# Central Locking Cylinders

## ZVZ.XIII



### Application:

Lock cylinder for furniture locks which lock all desk and cabinet drawers.

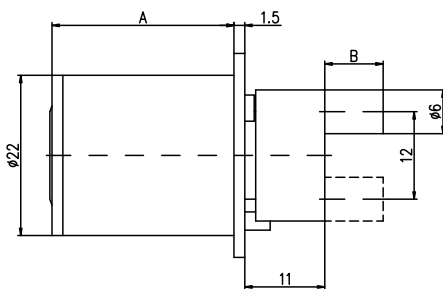
### Specification:

Housing supplied in solid natural brass with nickel plating  
 Reversible key made from nickel silver  
 Cam rotation 180°, key rotation 360°  
 Zinc plated steel mounting plate  
 Plastic cam for pin length 8mm  
 Brass cam for pin length 15mm and above

### Included with the cylinder:

2 reversible keys (See "Special Functions and Keys" for key options)  
 Plastic key clip in dark red for Kaba penta, in dark blue for all other systems  
 Security Card for ownership registration and ordering duplicate keys  
 Installation and Maintenance Instructions

<b>Premier Systems:</b>	<b>6</b> Kaba penta	<b>7</b> Kaba quattro pluS	<b>12</b> Kaba gemini pluS
Patent expired systems	<b>4</b> Kaba quattro S	<b>2</b> Kaba gemini S	
Old systems	<b>3</b> Kaba quattro <sup>1)</sup>	<b>1</b> Kaba gemini <sup>1)</sup>	
Dealer systems	<b>5</b> Kaba experT <sup>2)</sup>	<b>19</b> Kaba maTriX <sup>2)</sup>	
Old dealer system		<b>9</b> Kaba gemini T <sup>2)</sup>	

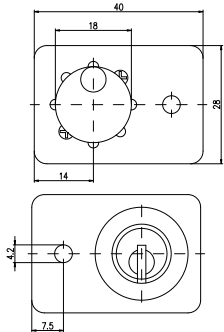


A = Cylinder length in mm  
 B = cam pin length in mm

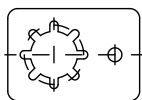
**Lengths** Body length (A) 25mm  
 Cam pin length (B) 8, 15, 37 and 40mm

### Options (See „Special Functions and Keys“ for details)

BAZ	Construction key	BAZ3	Construction key 3
BS19	Mounting plate type BS 19	BENE	Mouting plate type 75-4-011 for Bene



Mounting plate, Type BS 19



### Accessories

Order Code	Drawing No.	Description
ROSETTE.1008A.*	1008A-25	Slide on rosette for furniture cylinder Ø 22 mm, available in all surface finishes (* specify surface finish code at the end of the order code)

### Standard Surface Finishes

NI - Nickel plated	MS - Brass natural	
--------------------	--------------------	--

### Optional Surface Finishes

BH - brown light	MP - Brass polished	CR - Chrome standard
BM - brown medium	MSA - Brass antique	CRM - Chrom dull
BD - brown dark		CRP - Chrome polished
NIC - chemically nickel plated		
GO - gold plated		

Mounting plate, Type 75-4-011 for XIII BENE

### Order Code System

System Code.Cylinder.Type.Surface finish. Cam pin length.Mounting plate option

Example:

6.ZVZ.XIII.NI.15 = penta.central lock cylinder.XIII.nickel plated.15mm cam pin

Please note that certain options, finishes and dimensions may be subject to extended factory lead times. Please contact our office via email on sales.uk@kaba.com or telephone (0) 870 000 5625.

<sup>1)</sup> Kaba gemini and Kaba quattro are only offered for existing master key systems.

<sup>2)</sup> Kaba experT, Kaba maTriX and Kaba gemini T are only sold to authorized dealers.