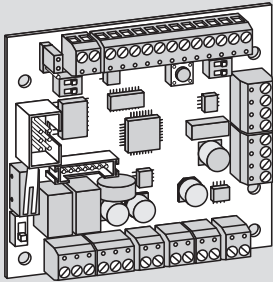


WN 057200 45532
10/08

SVP-S 22 DCW® / LON



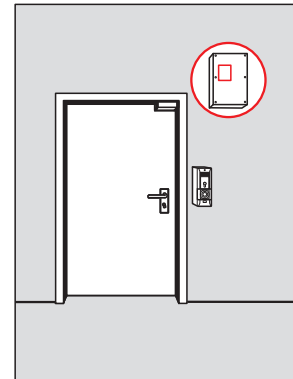
Elektrostatisch gefährdete
Bauelemente

Static sensitive devices

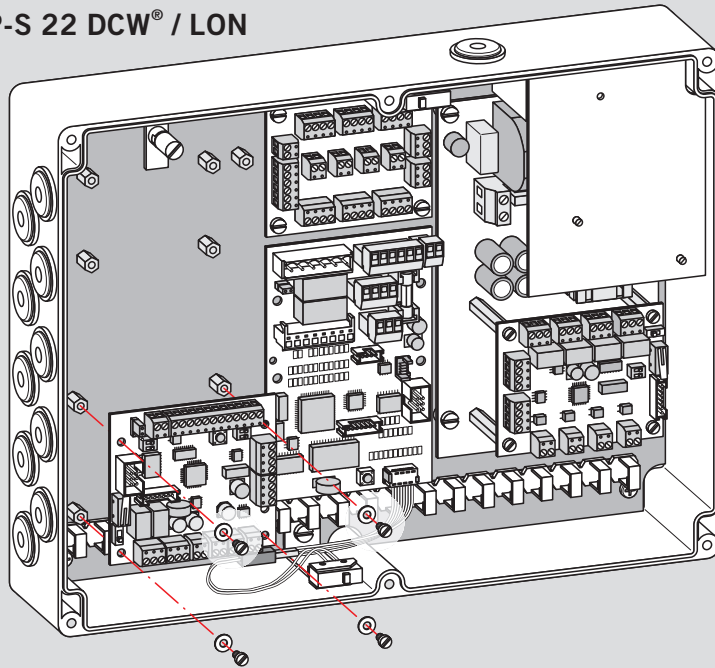
Circuits sensibles à
l'électricité statique

Elementi costruttivi sensibili
all'elettricità statica

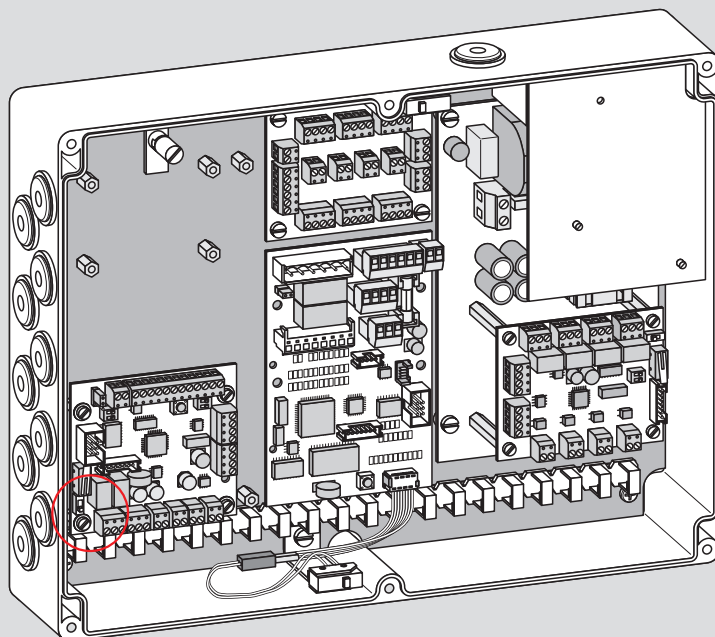
Elektrostatisch gevoelige
componenten



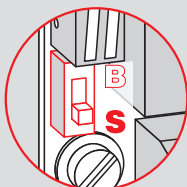
RZ-TMS + SVP-S 22 DCW® / LON

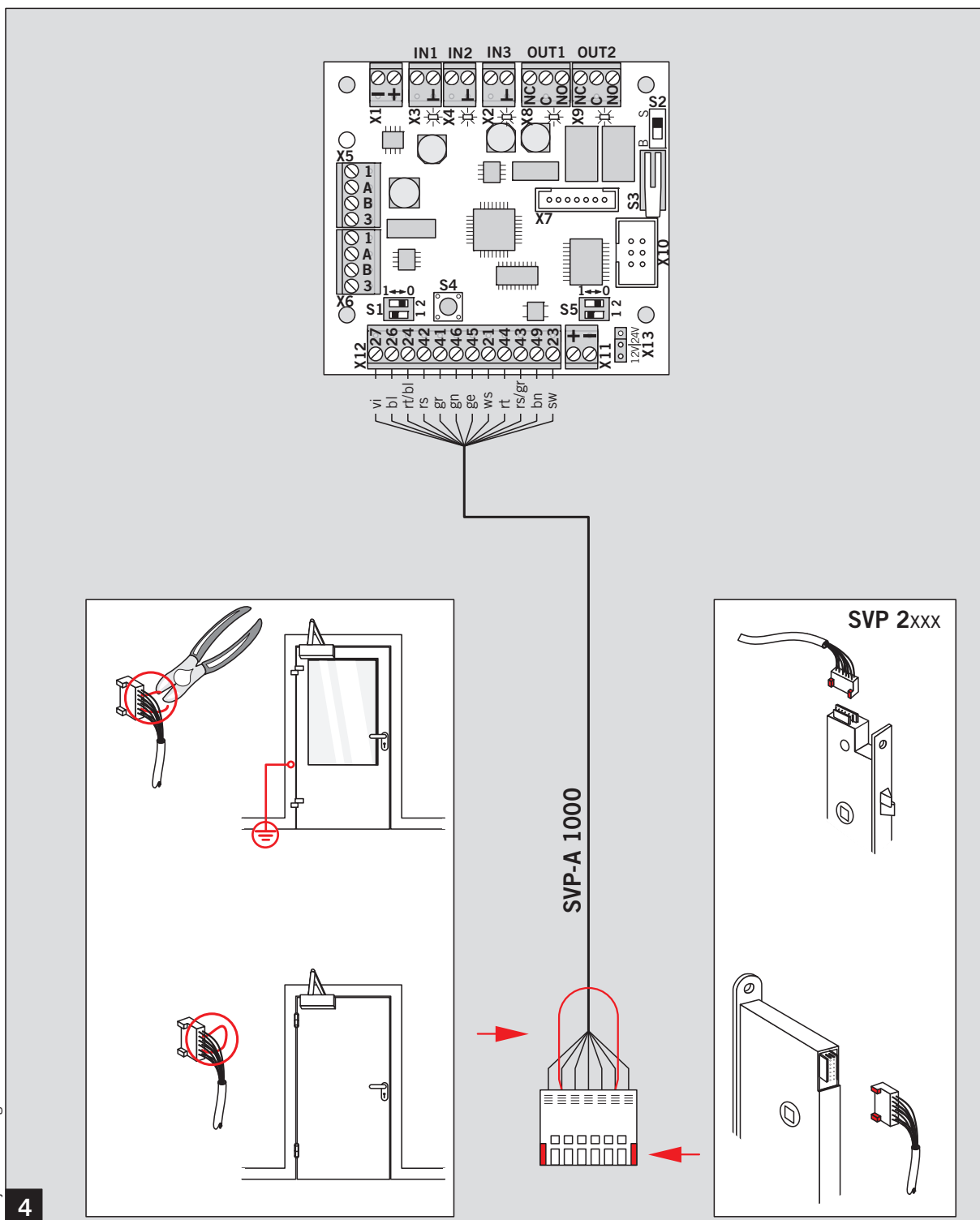
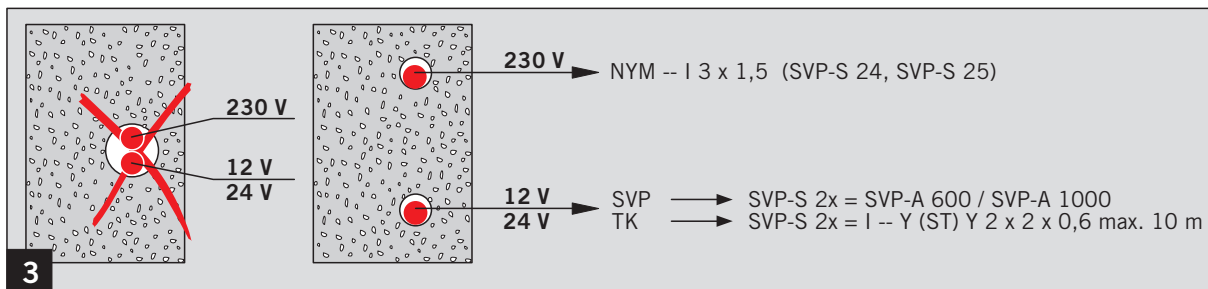


1



2





Änderungen vorbehalten
Subject to change without notice