

DORMA EMDE is an All-in-One delayed egress lock with a built-in sensor that detects pressure applied to outward swinging doors.

Built-in sounder, voice, and CCTV monitoring combinations make this ideal for applications requiring loss prevention, life safety, and traffic control. The EMDE series is unique in that there is no need to replace existing door hardware making this an easy and affordable delayed egress solution.

DORMA Solutions

- 1200 lb (540 kg) holding force
- All-in-one delayed egress lock
- Built in **sensor** detects when pressure is applied to outward swinging doors—no need to replace existing door hardware
- Field selectable 15 or 30 second release delay with field selectable 0 to 3 second nuisance delay
- Provision for IBC, SBC, NFPA101, UBC, BOCA or NBC of Canada compliance
- Unique highly visible **Red/Green** light panel indicates status of door (local)
- Available with built-in sounder, voice, and CCTV monitoring combinations
- Camera comes with BNC and RCA video outputs
- Includes KS817 keyswitch for reset and override, 15 second building code sign; base unit includes external sounder
- Built-in bond alert (BA) sensor feature indicates that the door is closed and bonded
- Built-in sounder, voice, and discreet CCTV monitoring
- Field selectable to meet a variety of building codes
- Dry contact SPDT and DPDT relays provided for local and/or remote monitoring
- Autosensing voltage from 12 to 24 VDC
- Spanish and French voice modules available

How to Order EMDE Series

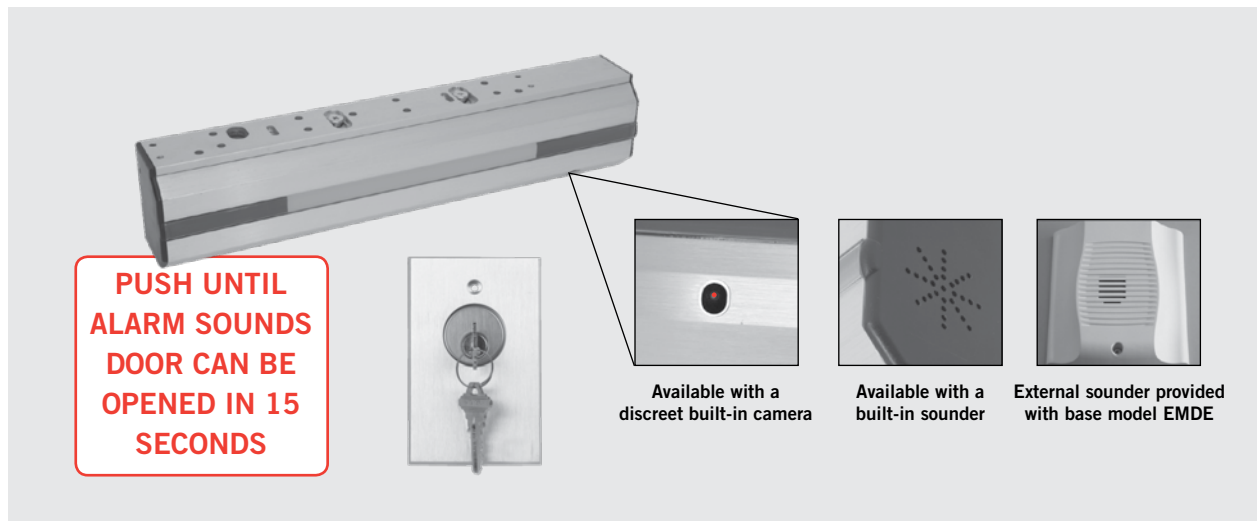
Options (VI/VC Models Only)		Finish
Voice Module, French —	VMF	628 — Clear Anodized Aluminum
Voice Module, Spanish —	VMS	
EMDE	SE	628
Delayed Egress Electromagnetic Lock Series	EMDE	
	SE	— Delayed Egress w/External Sounder
	SI	— Delayed Egress w/Built-In Sounder
	VI	— Delayed Egress w/Built-In Voice
	SC	— Delayed Egress w/Built-In Camera
	VC	— Delayed Egress w/Built-In Camera and Voice
Model		

Listings & Approvals

- UL/CUL listed under their continuing reinspection programs and conforms to standards UL 10C and GWXT positive pressure fire testing, 1-1/2 hour fire rated
- ANSI/BHMA 156.24, Grade 1 pending
- CSFM pending
- Contributes to U.S. Green Building Council, LEED® MR Credits 2.1 4.1, 4.2, and 5.1

Optional Accessories

- Spacers
- Angle bracket
- L bracket
- Filler bars
- Power supply
- Spanish and French voice modules
- 30 second building code sign



Specifications	EMDE
Housing Dimensions	Base Unit: 2-1/8" D x 2-7/8" H x 10-13/16" L (54 mm x 73 mm x 275 mm) Base Unit with Voice/Sound Unit: 2-1/8" D x 2-7/8" H x 11-3/4" L (54 mm x 73 mm x 299 mm) Base Unit with External Sounder: 2-1/8" D x 2-7/8" H x 14" L (54 mm x 73 mm x 355 mm) (including 1/4" (6 mm) mounting bracket)
Armature Plate Dimensions	5/8" D x 2-3/8" H x 7-7/16" L (16 mm x 60 mm x 189 mm)
Voltage	Auto sensing voltage 12/24 VDC Tolerance $\pm 10\%$
Power/Current Requirements	Camera Unit: Max 0.79 A @ 12 VDC Max 0.39 A @ 24 VDC Voice/Sounder Unit: Max 0.66 A @ 12V DC Max 0.33 A @ 24 VDC Base Unit with external sounder: Max 0.61 A @ 12 VDC Max 0.32 A @ 24 VDC
Holding Force	1200 lb (540 kg) pounds
Operating Temperature	Not for use in outdoor environments. Circuit board operating temperature 14° F to 140 °F (-10° C to 60° C)

NOTE: This product is intended for use with Special Locking Arrangements which are installed in accordance with the manufacturer's installation and operation instructions, the Life Safety Code, NFPA 101 of the National Fire Protection Association and the local authority having jurisdiction. Power for this unit is to be provided by a Listed Class 2 power supply when designated as a Special Locking Arrangement (FWAX). DORMA recommends frame reinforcement and our filtered, regulated DC voltage PS500 Series power supplies.

Function	Function Descriptions
Nuisance Delay	Accommodates accidental triggering with settings of 0 to 3 seconds as defined by the local building code.
Release Delay	Set at 15 seconds, this delay protects against unauthorized egress. It may be extended to 30 seconds with the approval of the local Authority Having Jurisdiction.
Light Panel	This full length feature is a highly visible red and green status indicator.
Sound Module	This built-in sounder pulses slowly during the short nuisance delay and sounds steady through the release delay until the door unlocks. If forced open before the set release delay has lapsed, the sounder cannot be turned off without switching the system power off.
Voice Module	Clear messages advise the exit status as follows: "Unauthorized personnel prohibited." "The emergency system has been activated. The door will unlock in a moment." "The door is now unlocked, please exit." If forced (before the set release delay has lapsed), the following warning is delivered: "Unauthorized access. Security personnel have been alerted and will arrive momentarily."
Camera Module	Provides continuous video signal to DVR equipment (BNC and RCA connectors provided).

NOTE: All installations must be approved by the local Authority Having Jurisdiction (AHJ)

DORMA also offers a complete line of Electromagnetic Locks, Electric Strikes, Door Controls, Power Supplies, Switches, Keypads & Readers, Exit Devices, Systems & Door Hardware.

DORMA Americas
www.dorma-usa.com

DORMA Architectural Hardware
DORMA Drive, Drawer AC
Reamstown, PA 17567-0411
Telephone: (800) 523-8483
Facsimile: (800) 274-9724
E-mail: archdw@dorma-usa.com

DORMA Canada
1680 Courtney Park Drive, Unit 13
Mississauga, Ontario L5T 1R4
Telephone: (800) 387-4938
Facsimile: (905) 670-5850
E-mail: sales@dormacanada.com

DORMA Mexico, S. de R.L. de C.V.
Astrónomos 28, Col. Escandón
México, D.F. 11800
Del. Miguel Hidalgo
Telephone: (52+55) 5272-6937
Facsimile: (52+55) 5272-6948
E-mail: operacion@dorma.com.mx