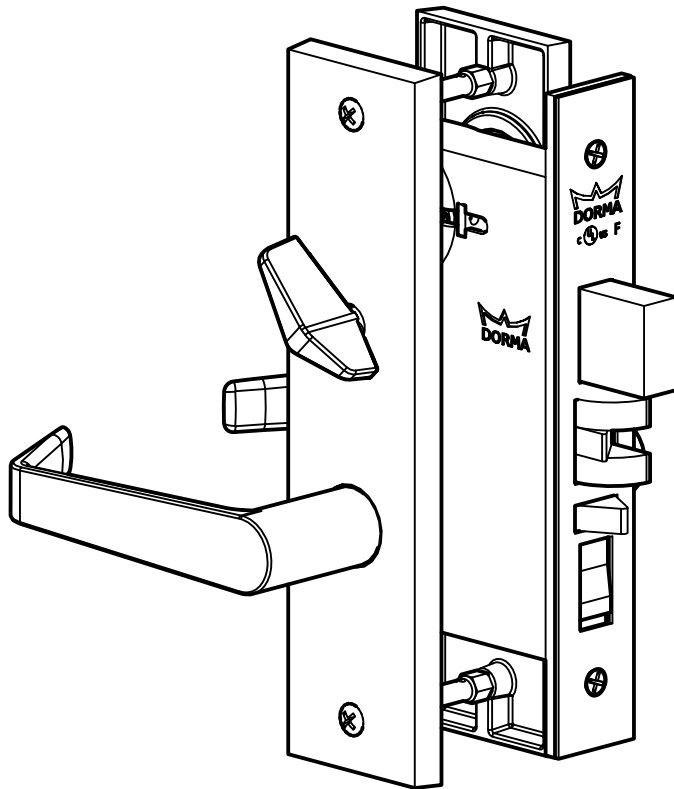


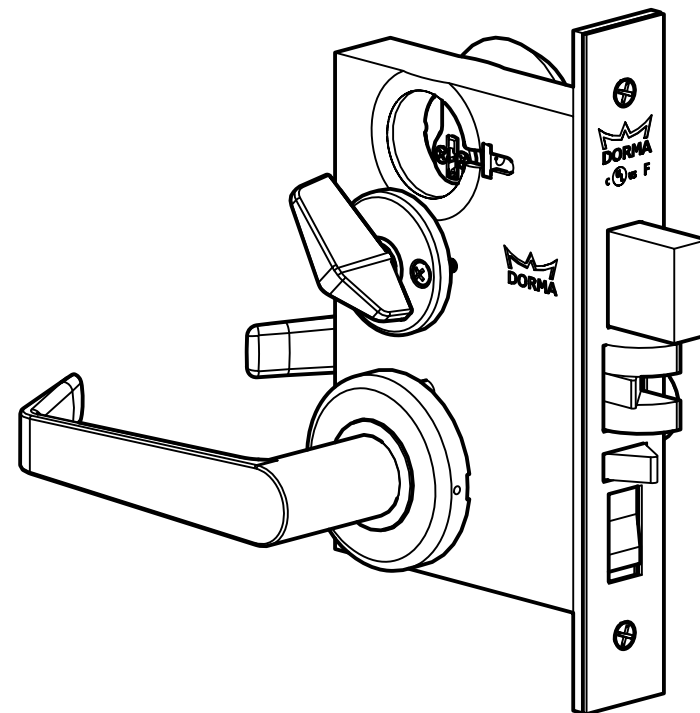
M9000 Series Mortise Lock Installation Instructions



DORMA Architectural Hardware
Reamstown, PA 17567



M9000 with 'H' Escutcheon Trim



M9000 with Rose Trim

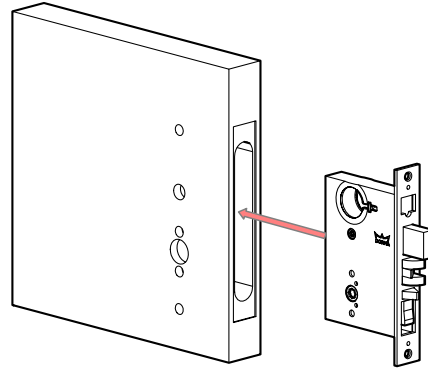
M9000 Mortise Lock Installation Instructions



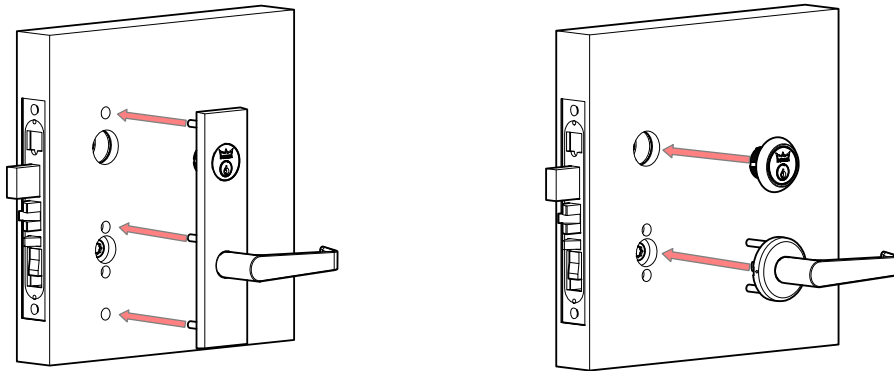
DORMA Architectural Hardware
Reamstown, PA 17567

1 Installing the Lock Body:

- A) Insert the lock body into the mortise cavity in the door.
- B) Use Lock body to mark hole location for mounting screws, Drill holes and fasten lock body to door edge.



2

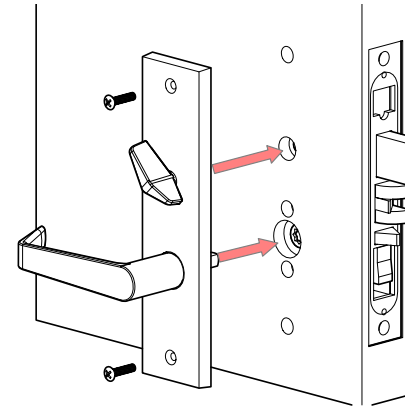


Exterior Trim Installation: Escutcheon & Rose

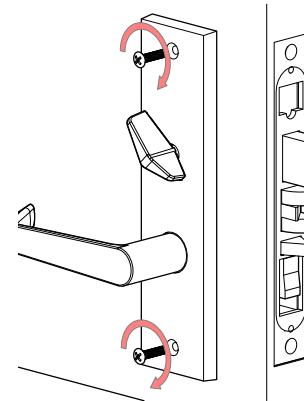
- A) Install exterior trim through lock chassis ensuring the lever spindle properly engages with lock
- B) Thread in cylinder until flush with escutcheon/trim ring
- C) Tighten cylinder retaining screw through access hole located above deadbolt

3a

Interior Trim Installation: Escutcheon



- A) Install interior trim through lock chassis ensuring lever spindle and thumb turn properly engage with lock



- B) Thread trim mounting screws into studs on outside trim and tighten

M9000 Mortise Lock Installation Instructions

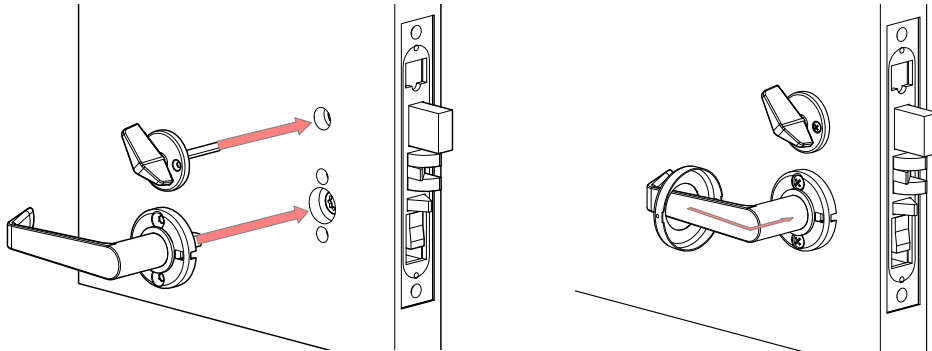


DORMA Architectural Hardware
Reamstown, PA 17567

3b

Interior Trim Installation: Rose

- A) Install interior trim through lock chassis ensuring lever spindle properly engages with lock
- B) Thread trim mounting screws into studs on outside trim and tighten
- C) Slide the rose cover over interior lever, align notches of cover with rose and snap on
- D) Insert turn piece, make sure spindle engages lock chassis properly, then fasten with two screws



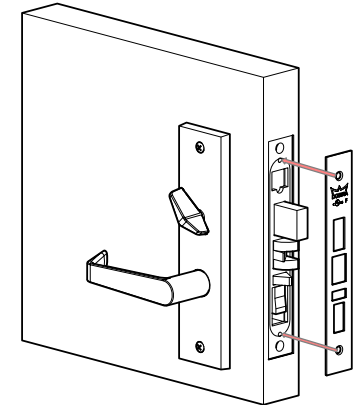
IMPORTANT

- 1) Be sure spindles have engaged lock chassis
- 2) Test for proper lock operation with turn piece, lever and key.
- 3) Tighten all screws, including cylinder set screw
- 4) Re-check lock for proper function BEFORE closing the door

4

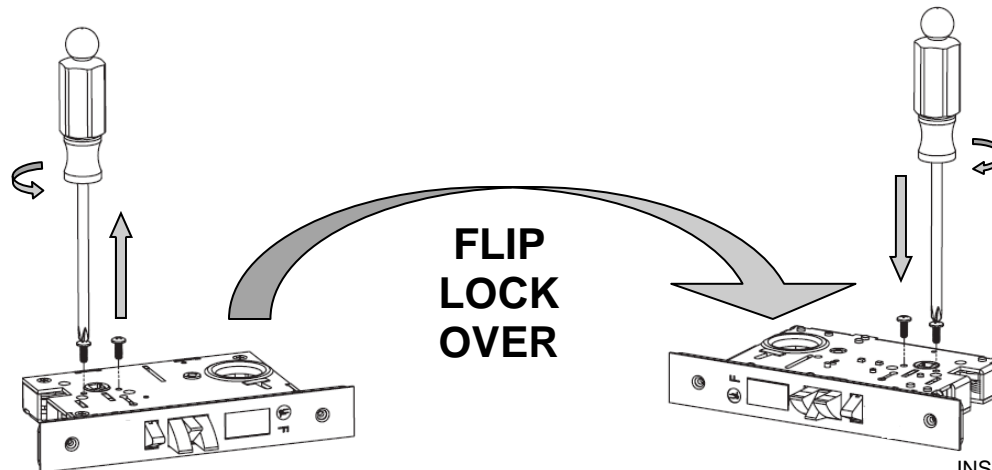
Armor Plate Installation:

- A) Align Armor Plate on face plate of lock chassis
- B) Tighten screws to secure Armor Plate to lock chassis



Changing the locking side:

- 1) Remove the two screws as shown above
- 2) Flip lock chassis over to opposite side



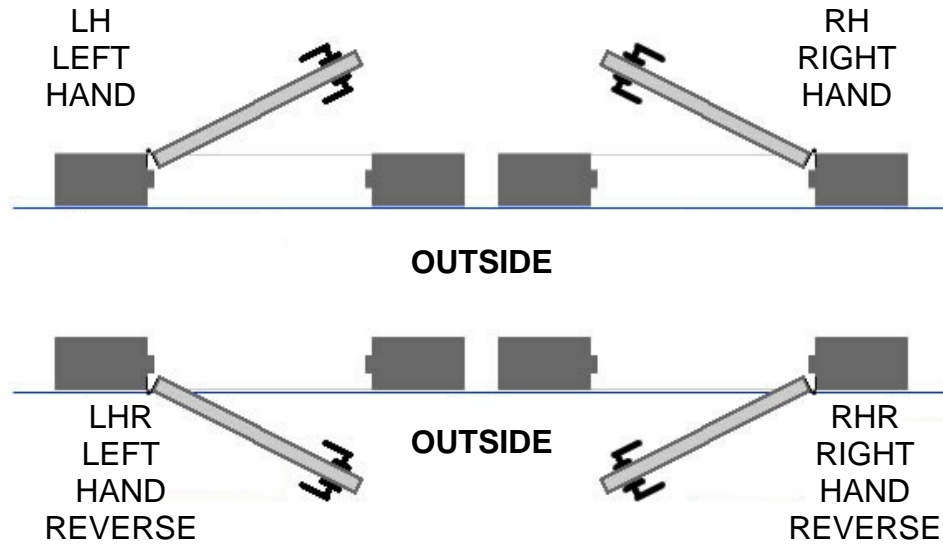
- 3) To ensure locking slide does not bind, manually push to the desired side or alternate tightening each screw every 2-3 turns

M9000 Mortise Lock Installation Instructions



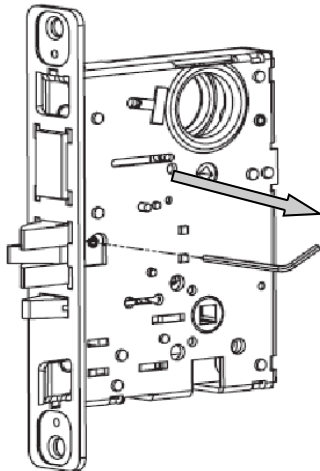
DORMA Architectural Hardware
Reamstown, PA 17567

Handing Examples:

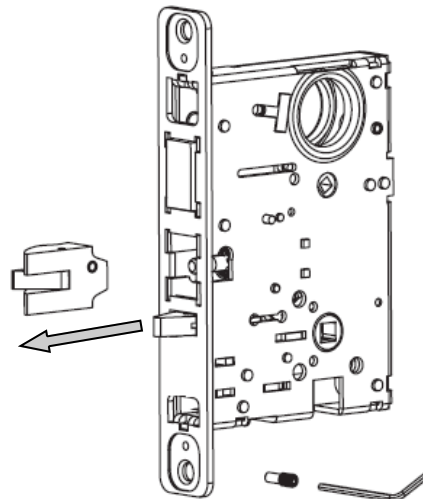


Changing the latchbolt position:

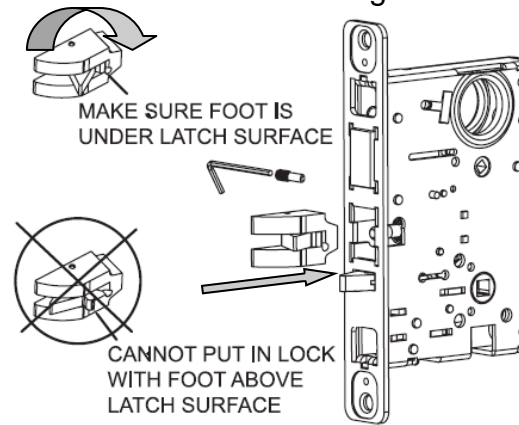
1) Remove special screw with provided 5/32" allen wrench



2) Pull latch out of lock



3) Rotate latch bolt 180° and reinstall into lock, pushing the latch bolt into the lock and then releasing



4) Install the special screw and tighten securely with the provided allen wrench

