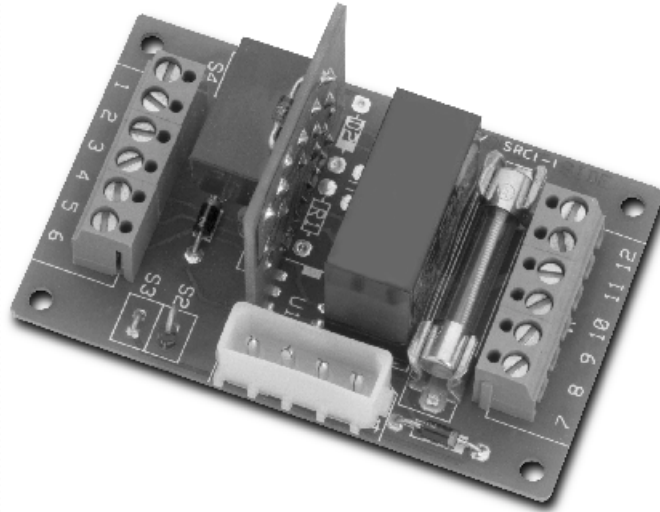


# LR – LATCHING RELAY MODULE



The optional LR module operates on 12V or 24V DC and accepts a momentary switch closure to Set or Reset the Latching (5 Amp Max.) Fused SPDT Voltage Output. A momentary switch closure across the Set Input (Pins 5 & 6) will latch the output voltage either "On" or "Off" until it is Reset by a momentary switch closure across the Reset Input (Pins 4 & 6). The output current cannot exceed the power supply rating of 1.5 Amps Maximum. The LR module can be used to lock or unlock a door for an extended period of time.

