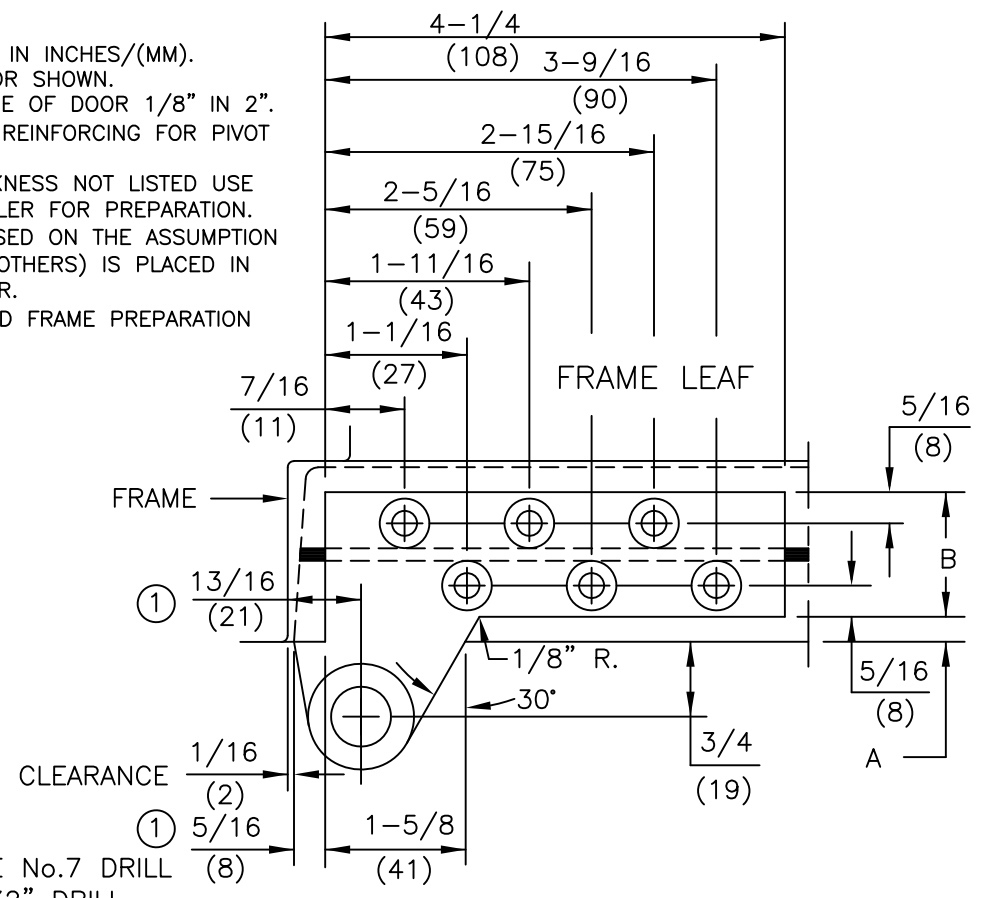


NOTES

2. DIMENSIONS ARE IN INCHES/(MM).
3. RIGHT HAND DOOR SHOWN.
4. BEVEL HEEL EDGE OF DOOR 1/8" IN 2".
5. ALL NECESSARY REINFORCING FOR PIVOT BY OTHERS.
6. FOR DOOR THICKNESS NOT LISTED USE NEXT SIZE SMALLER FOR PREPARATION.
7. TEMPLATE IS BASED ON THE ASSUMPTION THAT LEAD (BY OTHERS) IS PLACED IN CENTER OF DOOR.
8. FLUSH DOOR AND FRAME PREPARATION SHOWN.



FOR 1/4-20 MACHINE SCREWS USE No.7 DRILL  
 FOR No.14 WOOD SCREWS USE 5/32" DRILL  
 SIX (6) HOLES PER LEAF

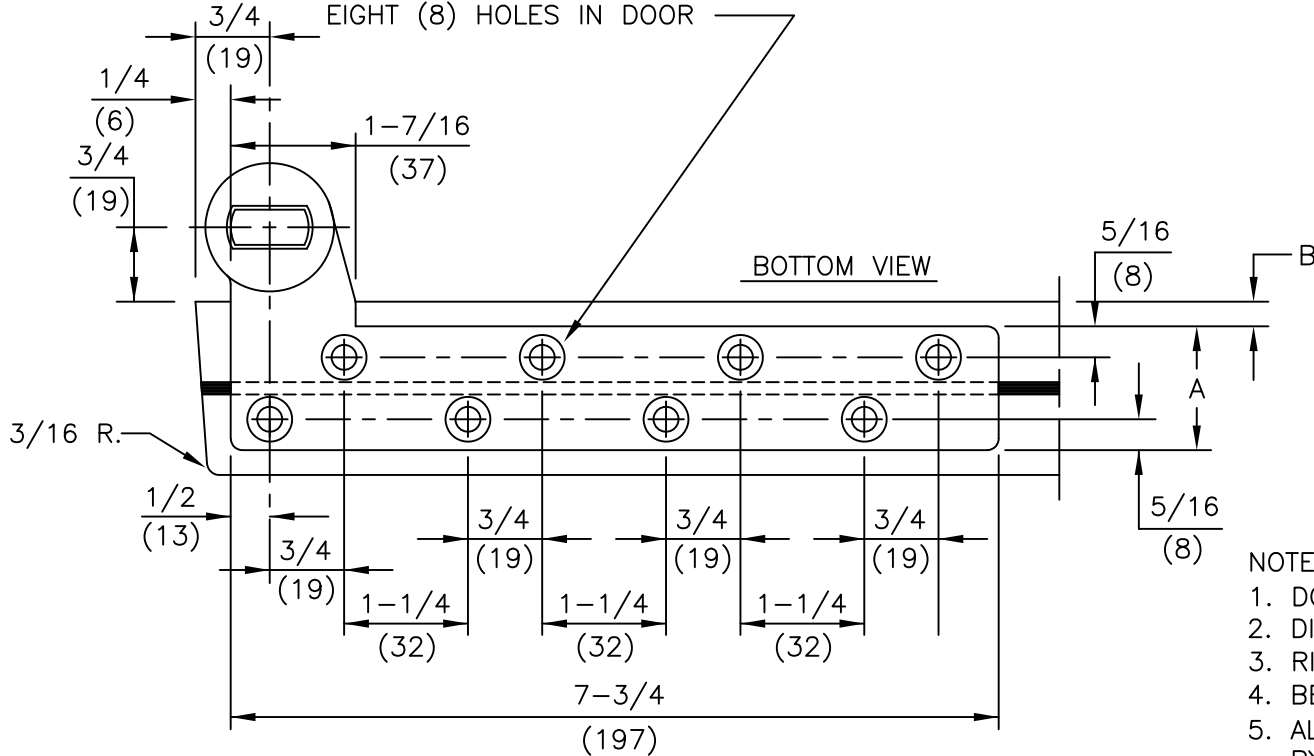
FOR FLUSH DOOR AND FRAME			
DOOR THICKNESS	DIM "A"	DIM "B"	DIM "C"
1-3/4"	1/4	1-1/4	1/4
2"	5/16	1-3/8	5/16
2-1/4"	3/8	1-1/2	3/8
2-1/2"	7/16	1-5/8	7/16
3"	1/2	2	1/2

FOR 1/8" INSET DOOR			
DOOR THICKNESS	DIM "A"	DIM "B"	DIM "C"
1-3/4"	3/8	1-1/4	1/4
2"	7/16	1-3/8	5/16
2-1/4"	1/2	1-1/2	3/8
2-1/2"	9/16	1-5/8	7/16
3"	5/8	2	1/2

ALL SERIES: [75140, 75142, 75143 (DOOR FLUSH WITH FRAME) NON-HANDED],  
 [75140 5/8, 75142 5/8, 75143 5/8 (DOOR INSET 1/8" FROM FRAME) HANDED]  
 3/4" OFFSET FULL MORTISE TOP PIVOT  
 FOR LEAD LINED OR EXTRA HEAVY DOORS



FOR 1/4-20 MACHINE SCREWS USE No.7 DRILL  
 FOR No.14 WOOD SCREWS USE 5/32" DRILL  
 EIGHT (8) HOLES IN DOOR

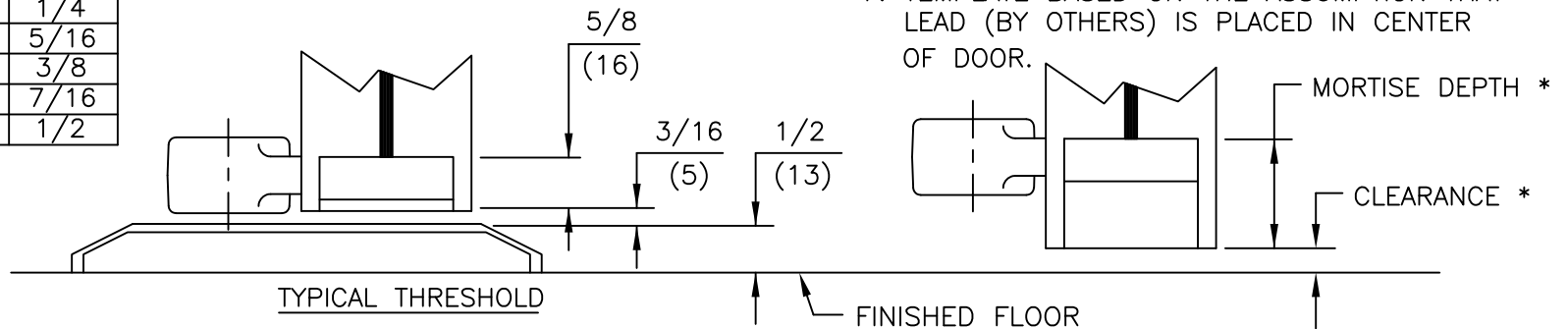


SPINDLE EXT.	CLEARANCE *	MORTISE DEPTH *
STD.	1/4"	1-1/16"
STD.	7/16"	7/8"
STD.	11/16"	5/8"
5mm	7/8"	5/8"
10mm	1-1/16"	5/8"
15mm	1-1/4"	5/8"
20mm	1-7/16"	5/8"
25mm	1-5/8"	5/8"
30mm	1-7/8"	5/8"
35mm	2-1/16"	5/8"
40mm	2-1/4"	5/8"
45mm	2-7/16"	5/8"
50mm	2-5/8"	5/8"

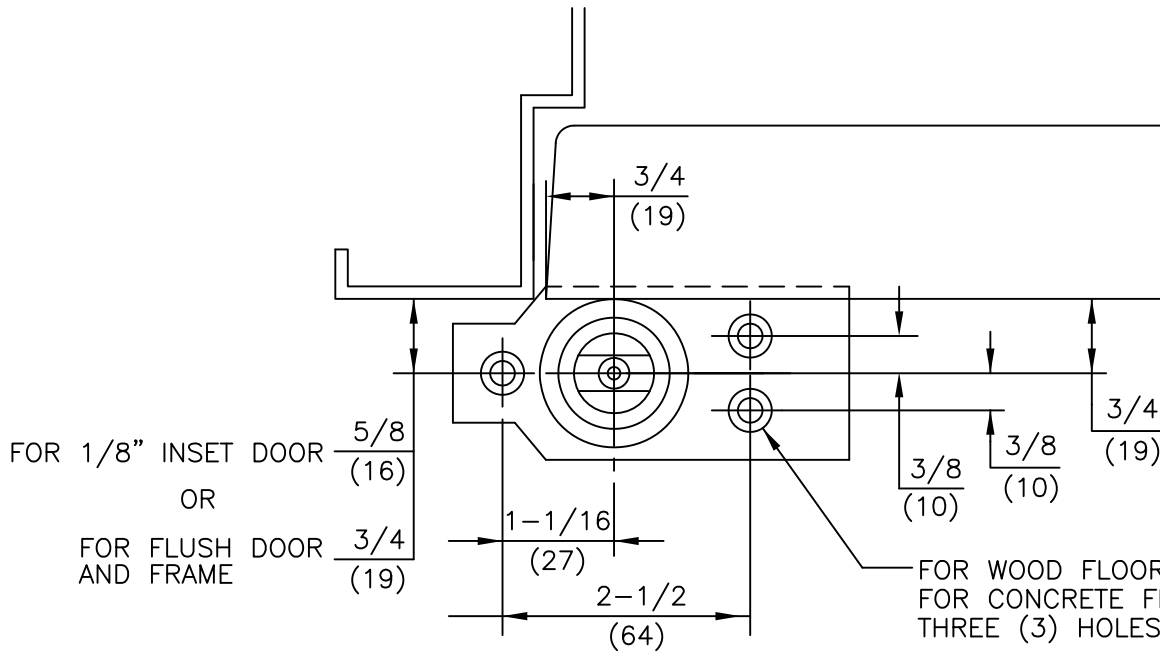
NOTES

1. DO NOT SCALE DRAWING.
2. DIMENSIONS ARE IN INCHES/(MM).
3. RIGHT HAND DOOR SHOWN.
4. BEVEL HEEL EDGE OF DOOR 1/8" IN 2".
5. ALL NECESSARY REINFORCEMENT FOR ARM BY OTHERS.
6. FOR DOOR THICKNESS NOT LISTED USE NEXT SIZE NARROWER ARM.
7. TEMPLATE BASED ON THE ASSUMPTION THAT LEAD (BY OTHERS) IS PLACED IN CENTER OF DOOR.

DOOR THICKNESS	DIM "A"	DIM "B"
1-3/4"	1-1/4	1/4
2"	1-3/8	5/16
2-1/4"	1-1/2	3/8
2-1/2"	1-5/8	7/16
3"	2	1/2

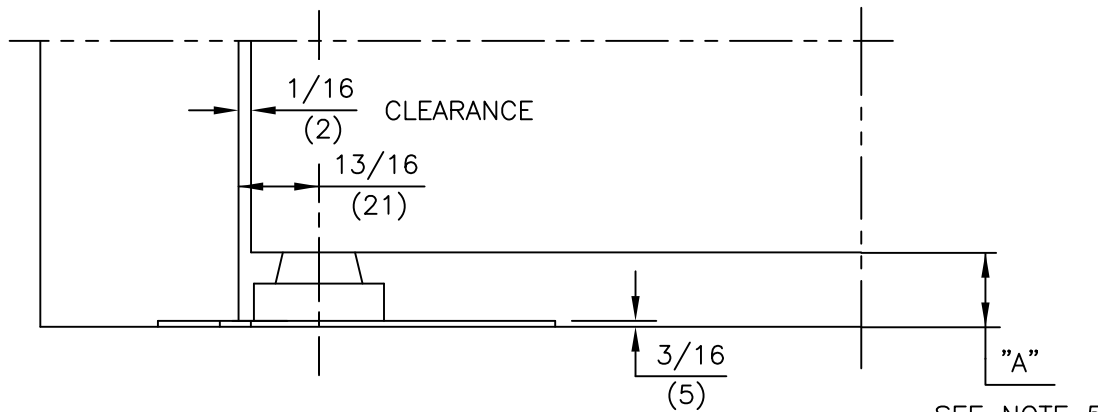


ITEM No. 75343, 75343-2, 75343-2 1/4, 75343-2 1/2, 75343-3  
 3/4" OFFSET HEAVY-DUTY BOTTOM ARM  
 FOR LEAD LINED OR EXTRA HEAVY DOORS  
 FOR USE WITH 7471K FLOOR BEARING



NOTES:

1. DO NOT SCALE DRAWING.
2. DIMENSIONS ARE IN INCHES\MM.
3. RIGHT HAND DOOR SHOWN.
4. FLUSH DOOR AND FRAME PREPARATION SHOWN.
5. DIMENSION "A" IS DISTANCE FROM BOTTOM OF PIVOT TO BOTTOM OF ARM. WHEN BOTTOM ARM IS INSTALLED TO THE STANDARD TEMPLATE, THIS IS ALSO EQUAL TO THE BOTTOM DOOR CLEARANCE.

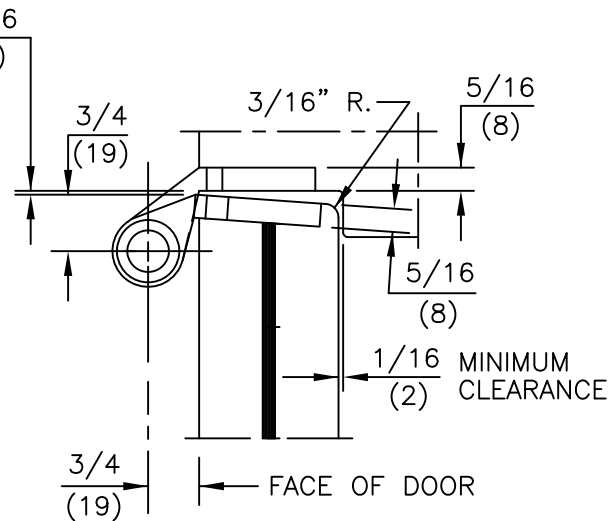


SPINDLE SIZE	DIM. "A"
STANDARD	$1\frac{1}{16}$ (17)
5MM EXT.	$\frac{7}{8}$ (22)
10MM EXT.	$1\text{-}\frac{1}{16}$ (27)
15MM EXT.	$1\text{-}\frac{1}{4}$ (32)
20MM EXT.	$1\text{-}\frac{7}{16}$ (37)
25MM EXT.	$1\text{-}\frac{5}{8}$ (42)
30MM EXT.	$1\text{-}\frac{7}{8}$ (47)
35MM EXT.	$2\text{-}\frac{1}{16}$ (52)
40MM EXT.	$2\text{-}\frac{1}{4}$ (57)
45MM EXT.	$2\text{-}\frac{7}{16}$ (62)

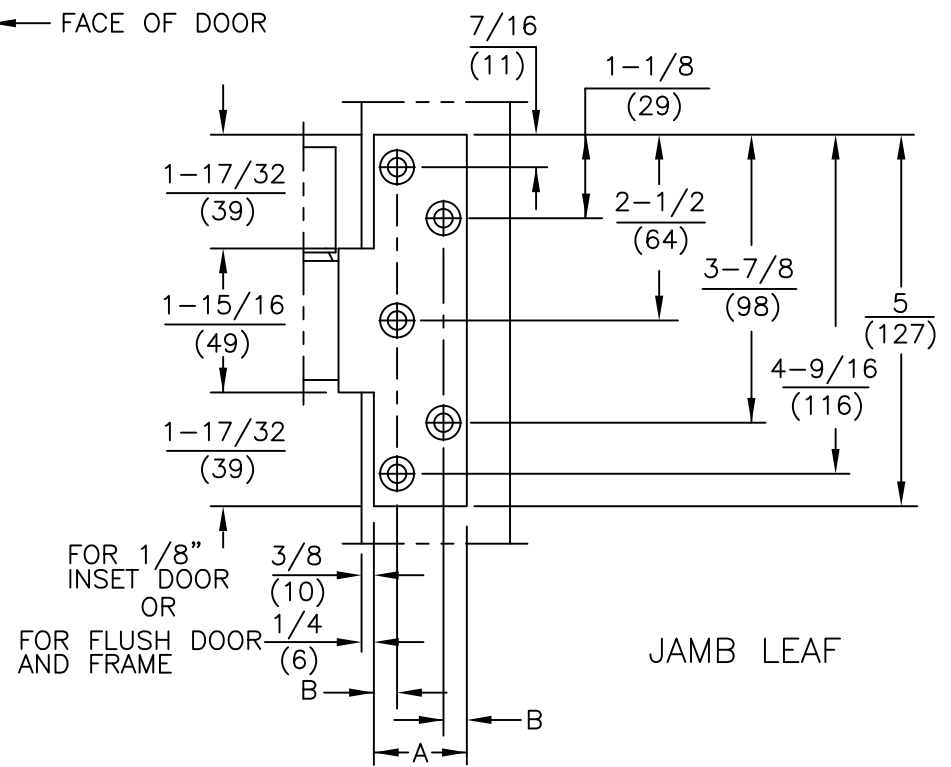
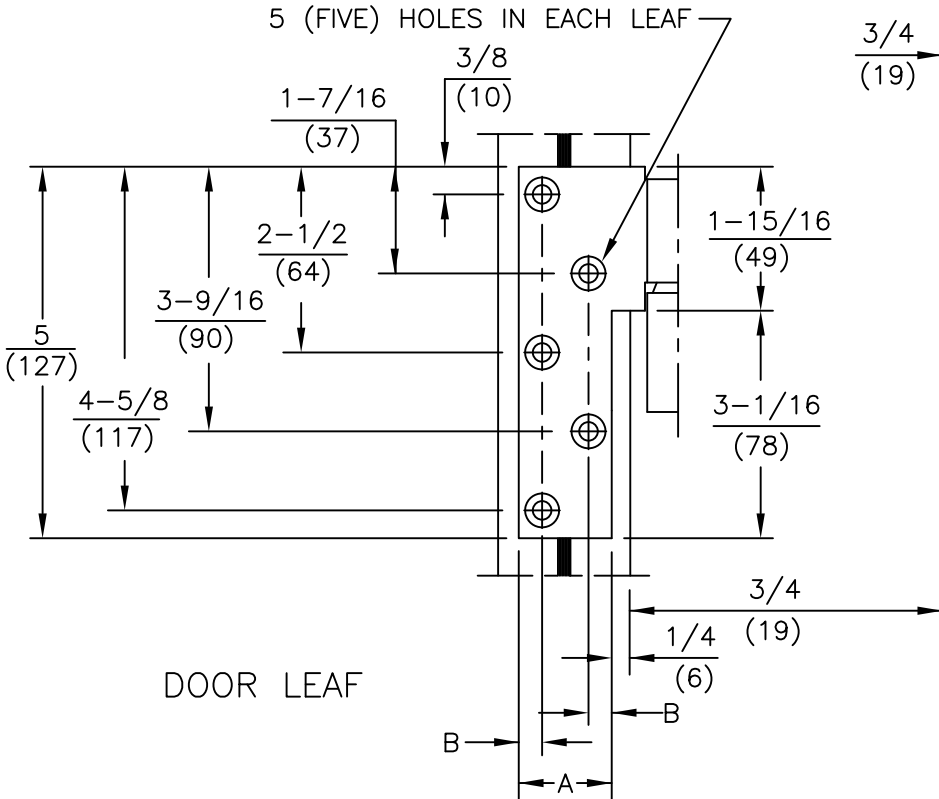
NOTES

1. DO NOT SCALE DRAWING.
  2. DIMENSIONS ARE IN INCHES/(MM).
  3. RIGHT HAND DOOR SHOWN.
  4. BEVEL HEEL EDGE OF DOOR 1/8" IN 2".
  5. ALL NECESSARY REINFORCEMENT FOR PIVOT BY OTHERS.
  6. FOR DOOR THICKNESS NOT LISTED USE NEXT SIZE SMALLER FOR PREPARATION.
  7. TEMPLATE IS BASED ON THE ASSUMPTION THAT LEAD (BY OTHERS) IS PLACED IN CENTER OF DOOR.
  8. FLUSH DOOR AND FRAME PREPARATION SHOWN.
- FOR 1/4-20 MACHINE SCREWS USE No.7 DRILL  
 FOR No.14 WOOD SCREWS USE 5/32" DRILL

CLEARANCE  $\frac{1}{16}$   
 (2)



DOOR THICKNESS	DIM "A"	DIM "B"
1-3/4"	1-1/4	1/4
2"	1-1/2	5/16
2-1/4"	1-3/4	5/16
2-1/2"	2	5/16
3"	2-7/16	5/16



ALL SERIES: 75240, 75242, 75243  
 3/4" OFFSET FULL MORTISE  
 INTERMEDIATE PIVOT (HANDED)  
 FOR LEAD LINED OR EXTRA HEAVY DOORS



dormakaba USA, INC.  
 800 523 8483