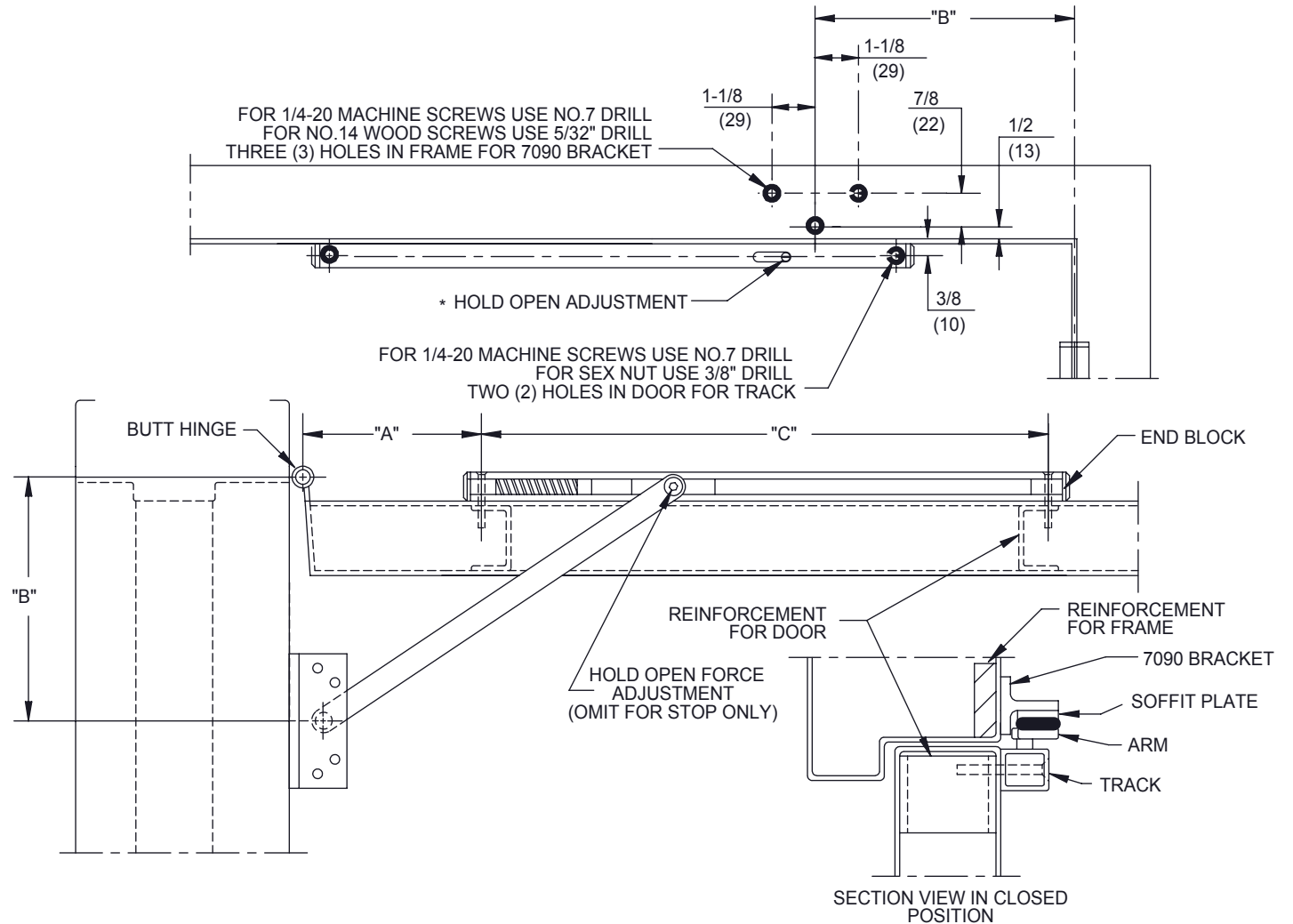
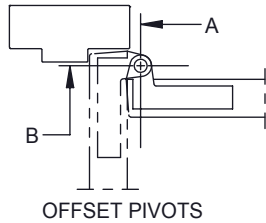


INSTALLATION INSTRUCTIONS:

1. Determine unit type: (S) DEAD STOP ONLY or (H) HOLD OPEN.
2. Determine degree of hold-open or dead stop required and select the "A", "B" and "C" dimensions from the opposite side of page.
3. Prepare door and frame according to the template found on this page.
4. Install 7090 bracket to frame.
5. Place end blocks into each end of the track. Install track and arm assembly to door, making sure spring faces hinges.
6. Attach soffit plate to 7090 bracket.

* ADDITIONAL INSTRUCTIONS (HOLD-OPEN UNITS):

7. Adjust hold-open to on or off position. One direction on-opposite direction off.
8. Adjust the holding force by inserting a 5/64" Hex Key into the slide shoe bolt. Turn right to increase and left to decrease holding force.
9. Open door until slide shoe engages with hold-open.
10. To release the door, pull until the slide shoe disengages.



NOTES:

1. DO NOT SCALE DRAWING.
2. DIMENSIONS ARE IN INCHES.
3. LEFT HAND DOOR SHOWN.

STOP AND HOLDER SERIES: 901H - 903H, 901S - 903S
 HEAVY DUTY SURFACE APPLIED STOP/HOLD
 PULL SIDE MOUNT WITH 7090 BRACKET
 3/4" OFFSET AND 4-1/2" X 4-1/2" HINGES



DORMA USA, Inc.
 Reamstown, PA 17567

**900S, 900H SERIES x 7090 BRACKET
HEAVY DUTY SURFACE OVERHEAD STOP AND HOLDER**

UNIT	DEGREE OF OPENING	4-1/2" HINGES OR 3/4" PIVOTS			DIM "C"	DEGREE OF OPENING	UNIT
		DOOR RANGE	DIM "A"	DIM "B"			
901 S	85° STOP ONLY	24 to 34	6-1/4	5-1/2	17-1/4	85° STOP ONLY	901 S
	90° STOP ONLY		5-7/8	5-1/2		90° STOP ONLY	
	95° STOP ONLY		5-3/8	5-1/2		95° STOP ONLY	
	100° STOP ONLY		4-7/8	5-1/2		100° STOP ONLY	
	105° STOP ONLY		4-3/8	5-1/2		105° STOP ONLY	
	110° STOP ONLY		4	5-1/2		110° STOP ONLY	
901 H	85° STOP & HOLD	24 to 34	5-11/16	5-1/2	17-1/4	85° STOP & HOLD	901 H
	90° STOP & HOLD		5-3/16	5-1/2		90° STOP & HOLD	
	95° STOP & HOLD		4-11/16	5-1/2		95° STOP & HOLD	
	100° STOP & HOLD		4-1/4	5-1/2		100° STOP & HOLD	
	105° STOP & HOLD		3-13/16	5-1/2		105° STOP & HOLD	
	110° STOP & HOLD		3-7/16	5-1/2		110° STOP & HOLD	
902 S	85° STOP ONLY	34-1/8 to 44	12-1/4	9-3/4	20-3/4	85° STOP ONLY	902 S
	90° STOP ONLY		11-3/8	9-3/4		90° STOP ONLY	
	95° STOP ONLY		10-1/2	9-3/4		95° STOP ONLY	
	100° STOP ONLY		10-1/2	8-1/2		100° STOP ONLY	
	105° STOP ONLY		9-7/8	8-1/2		105° STOP ONLY	
	110° STOP ONLY		9-1/4	8-1/2		110° STOP ONLY	
902 H	85° STOP & HOLD	34-1/8 to 44	11-5/8	9-3/4	20-3/4	85° STOP & HOLD	902 H
	90° STOP & HOLD		10-3/4	9-3/4		90° STOP & HOLD	
	95° STOP & HOLD		9-7/8	9-3/4		95° STOP & HOLD	
	100° STOP & HOLD		9-7/8	8-1/2		100° STOP & HOLD	
	105° STOP & HOLD		9-1/4	8-1/2		105° STOP & HOLD	
	110° STOP & HOLD		8-9/16	8-1/2		110° STOP & HOLD	
903 S	85° STOP ONLY	44-1/8 to 54	16-1/8	13-1/2	26	85° STOP ONLY	903 S
	90° STOP ONLY		14-7/8	13-1/2		90° STOP ONLY	
	95° STOP ONLY		13-3/4	13-1/2		95° STOP ONLY	
	100° STOP ONLY		13-7/8	12		100° STOP ONLY	
	105° STOP ONLY		12-15/16	12		105° STOP ONLY	
	110° STOP ONLY		12-1/8	12		110° STOP ONLY	
903 H	85° STOP & HOLD	44-1/8 to 54	15-1/2	13-1/2	26	85° STOP & HOLD	903 H
	90° STOP & HOLD		14-1/4	13-1/2		90° STOP & HOLD	
	95° STOP & HOLD		13-1/8	13-1/2		95° STOP & HOLD	
	100° STOP & HOLD		13-1/4	12		100° STOP & HOLD	
	105° STOP & HOLD		12-5/16	12		105° STOP & HOLD	
	110° STOP & HOLD		11-1/2	12		110° STOP & HOLD	

- a. All 4-1/2" WIDE HINGE and 3/4" OFFSET PIVOT dimensions are for 1-3/4" thick doors. For additional door thicknesses consult DORMA's Technical Services department.
- b. DEAD STOP is the maximum degree to which the door will open when the shock spring is fully compressed.
- c. HOLD OPEN is the degree the door is held open. The shock absorber spring compresses while the door moves to the dead stop position which is several degrees greater.
- d. All values are in inches.



DORMA USA, Inc.
Reamstown, PA 17567