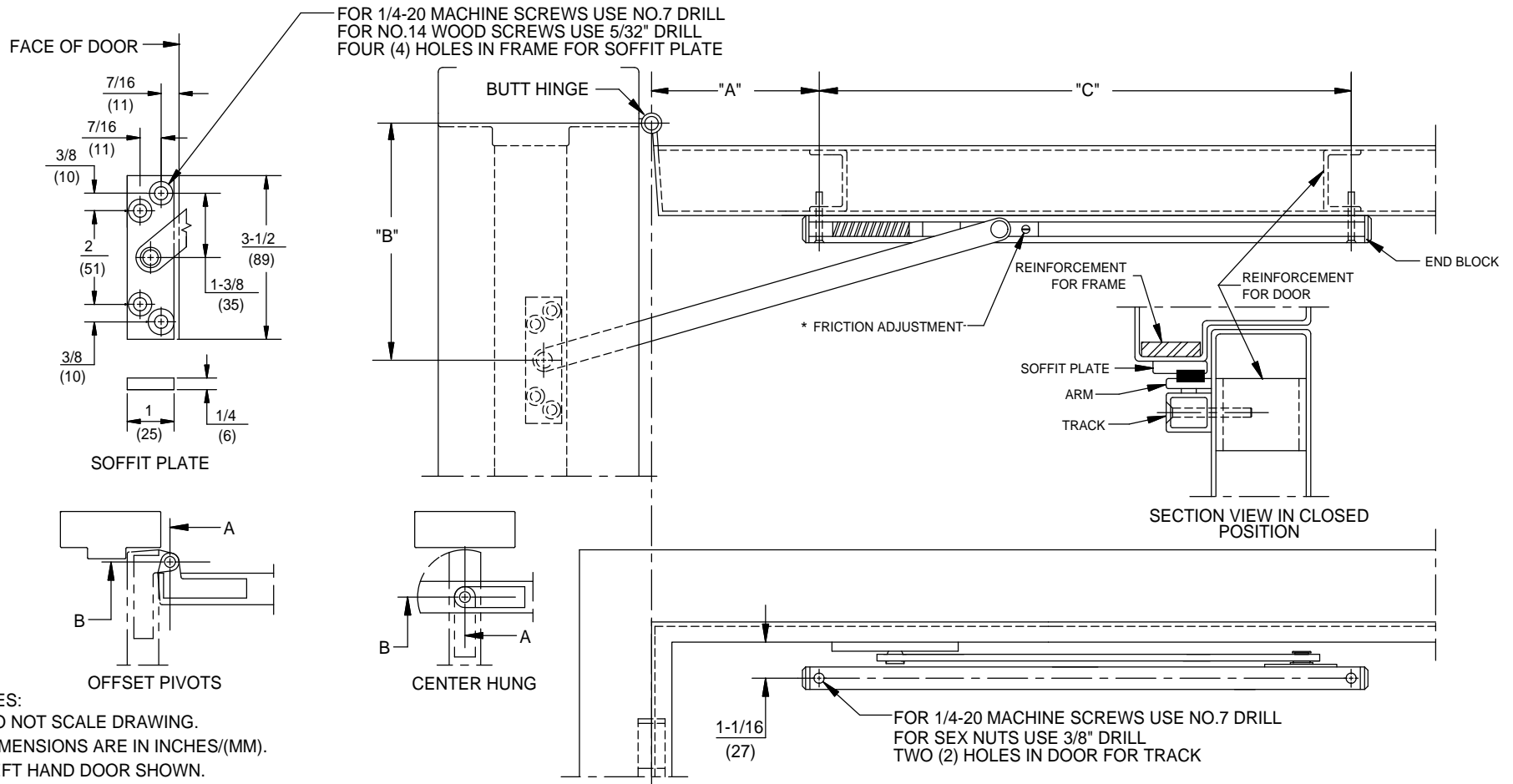


INSTALLATION INSTRUCTIONS:

1. Determine degree of dead stop required and select the "A", "B" and "C" dimensions from the opposite side of this page.
2. Prepare door and frame according to the template found on this page.
3. Insert end blocks into each end of track. Install track and arm assembly on door, making sure spring faces hinges.
4. Attach soffit plate to frame.
5. Adjust hold-open friction tension. Clockwise turns increase friction.
6. Open door to selective hold-open degree.
7. To close door, push closed.



- NOTES:**
1. DO NOT SCALE DRAWING.
 2. DIMENSIONS ARE IN INCHES/(MM).
 3. LEFT HAND DOOR SHOWN.

STOP AND HOLDER SERIES: 701F - 703F
STANDARD DUTY SURFACE APPLIED FRICTION/STOP
PUSH SIDE MOUNT
CENTER HUNG, 3/4" OFFSET AND 4-1/2" X 4-1/2" HINGES



DORMA Architectural Hardware
Reamstown, PA 17567

**700 F SERIES
STANDARD DUTY SURFACE OVERHEAD STOP AND HOLDER**



UNIT	DEGREE OF OPENING	4-1/2" HINGES OR 3/4" PIVOTS			CENTER HUNG			DIM "C"	DEGREE OF OPENING	UNIT
		DOOR RANGE	DIM "A"	DIM "B"	DOOR RANGE	DIM "A"	DIM "B"			
701 F	85° STOP	21 to 27	3-13/16	4-3/4	24 to 28	5-1/16	4-1/2	14-3/4	85° STOP	701 F
	90° STOP		3-7/16	4-3/4		4-11/16	4-1/2		90° STOP	
	95° STOP		3-1/16	4-3/4		4-3/8	4-1/2		95° STOP	
	100° STOP		2-3/4	4-3/4		4-1/16	4-1/2		100° STOP	
	105° STOP		2-7/16	4-3/4		3-3/4	4-1/2		105° STOP	
	110° STOP		2-3/16	4-3/4		3-1/2	4-1/2		110° STOP	
702 F	85° STOP	27-1/8 to 36	6-3/4	6-3/4	28-1/8 to 36	6-5/16	7	17-1/4	85° STOP	702 F
	90° STOP		6-1/4	6-3/4		5-3/4	7		90° STOP	
	95° STOP		5-3/4	6-3/4		5-1/4	7		95° STOP	
	100° STOP		5-5/16	6-3/4		4-3/4	7		100° STOP	
	105° STOP		4-7/8	6-3/4		4-5/16	7		105° STOP	
	110° STOP		4-1/2	6-3/4		3-15/16	7		110° STOP	
703 F	85° STOP	36-1/8 to 54	9-3/4	10-1/8	36-1/8 to 54	10-5/8	10	20-3/4	85° STOP	703 F
	90° STOP		9	10-1/8		9-13/16	10		90° STOP	
	95° STOP		8-1/4	10-1/8		9-1/16	10		95° STOP	
	100° STOP		8-1/8	9-1/8		9-1/16	9		100° STOP	
	105° STOP		7-9/16	9-1/8		8-7/16	9		105° STOP	
	110° STOP		7-1/16	9-1/8		7-7/8	9		110° STOP	

- a. All 4-1/2" WIDE HINGE and 3/4" OFFSET PIVOT dimensions are for 1-3/4" thick doors, CENTER HUNG are for 1-3/4" to 2-1/4" thick doors. For additional door thicknesses consult DORMA's Technical Services department.
- b. STOP is the maximum degree to which the door will open when the shock spring is fully compressed.
- c. All values are in inches.

