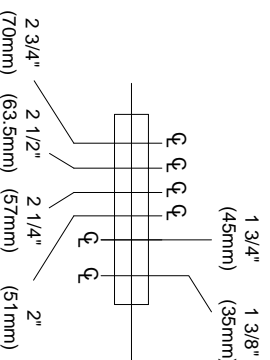


**IMPORTANT :**

Check door thickness before drilling.



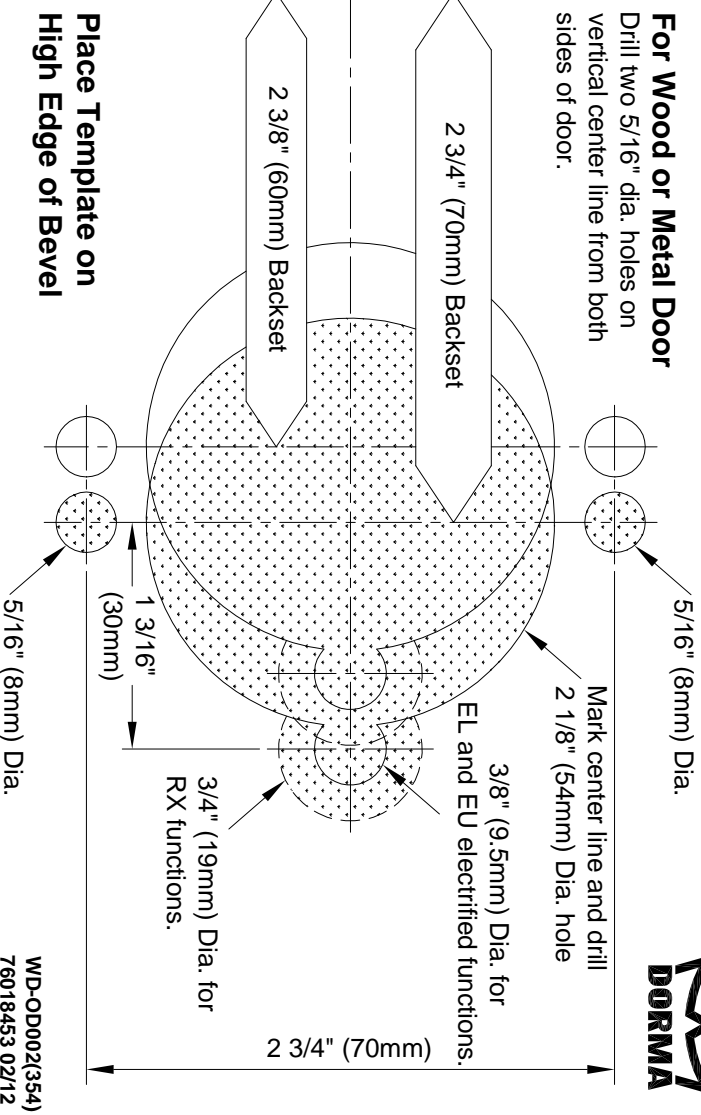
Drill 1" (25mm) Dia. hole on door edge center line

**Fold and Align Template on Edge of Door**

**Installation Template of Electrified Lever Set**

**For Wood or Metal Door**

Drill two 5/16" dia. holes on vertical center line from both sides of door.



Place Template on High Edge of Bevel



WD-OD002(354)  
76018453 02/12