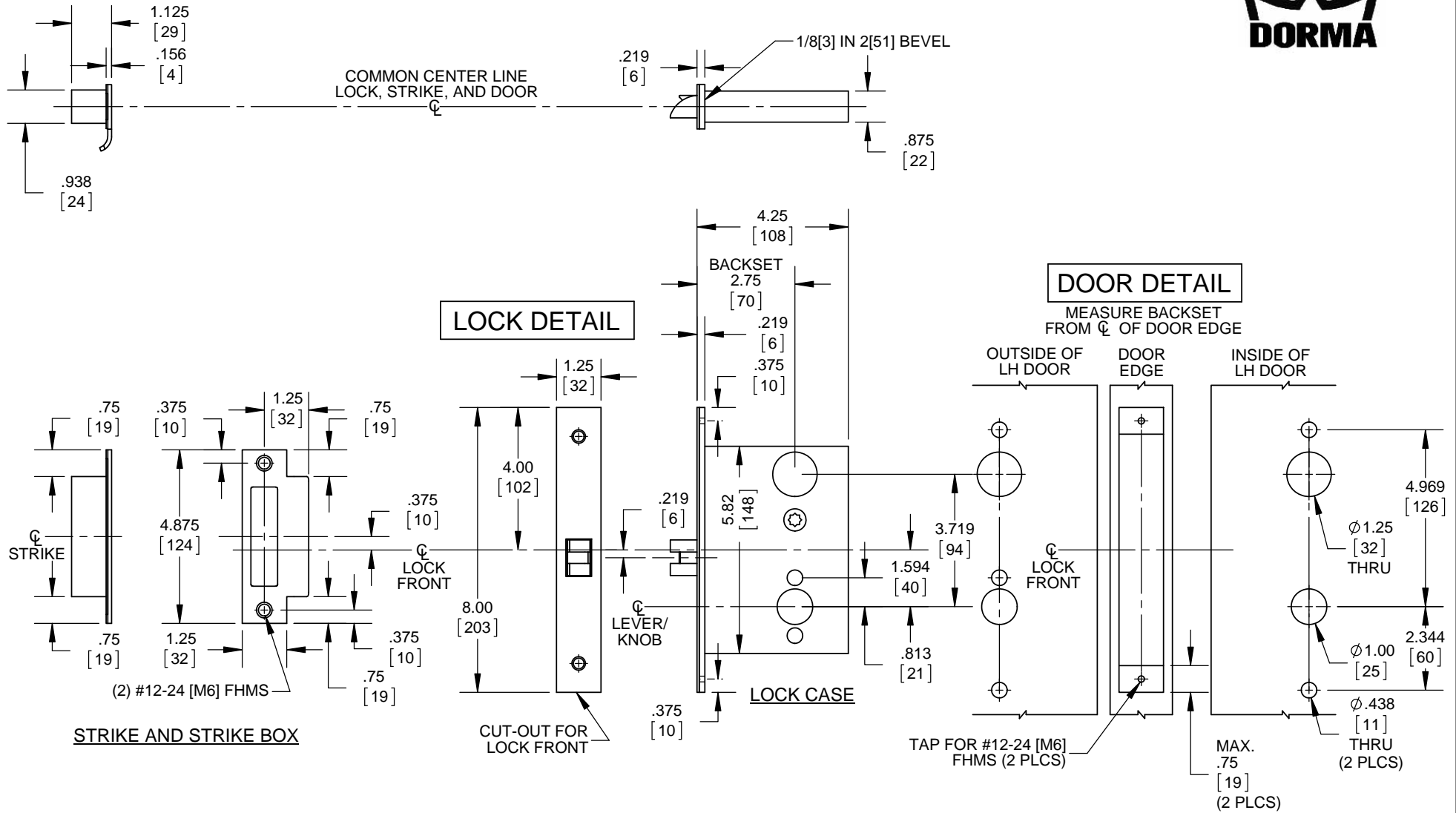


NOTES:

1. DIMENSIONS ARE IN INCHES/[MM].
2. DO NOT SCALE DRAWING.
3. FOR #12 FHWS, USE 9/64" (.140") DRILL.
4. FOR #12-24 FHMS, USE #16 (.177") DRILL & TAP.

DOOR CUT-OUTS AS INDICATED UNDER DOOR DETAIL.
FRAME FOR STRIKE SHOWN UNDER LOCK DETAIL.



NOTES:

1. DIMENSIONS ARE IN INCHES/[MM].
2. DO NOT SCALE DRAWING.
3. FOR #12 FHWS, USE 9/64" (.140") DRILL.
4. FOR #12-24 FHMS, USE #16 (.177") DRILL & TAP.

DOOR CUT-OUTS AS INDICATED UNDER DOOR DETAIL.
 FRAME FOR STRIKE SHOWN UNDER LOCK DETAIL.