



MIAMI-DADE COUNTY
 PRODUCT CONTROL SECTION
 11805 SW 26 Street, Room 208
 Miami, Florida 33175-2474
 T (786) 315-2590 F (786) 315-2599
www.miamidade.gov/economy

DEPARTMENT OF REGULATORY AND ECONOMIC RESOURCES (RER)
 BOARD AND CODE ADMINISTRATION DIVISION
NOTICE OF ACCEPTANCE (NOA)

Dorma Door Control, Inc.
 1003 West Broadway
 Steelville, IL 62288

SCOPE:

This NOA is being issued under the applicable rules and regulations governing the use of construction materials. The documentation submitted has been reviewed and accepted by Miami-Dade County RER -Product Control Section to be used in Miami Dade County and other areas where allowed by the Authority Having Jurisdiction (AHJ).

This NOA shall not be valid after the expiration date stated below. The Miami-Dade County Product Control Section (In Miami Dade County) and/or the AHJ (in areas other than Miami Dade County) reserve the right to have this product or material tested for quality assurance purposes. If this product or material fails to perform in the accepted manner, the manufacturer will incur the expense of such testing and the AHJ may immediately revoke, modify, or suspend the use of such product or material within their jurisdiction. RER reserves the right to revoke this acceptance, if it is determined by Miami-Dade County Product Control Section that this product or material fails to meet the requirements of the applicable building code.

This product is approved as described herein, and has been designed to comply with the Florida Building Code, including the High Velocity Hurricane Zone.

DESCRIPTION: Dorma's Series "8000" Panic Exit Devices-Component Approval

APPROVAL DOCUMENT: Drawing No.8000DADE Rev 4, titled "8300 Rim or 8400/8400 Series Surface vertical Rod (SVR)", sheets 1 through 2 of 2, dated 12-19-00 and last revised on 09/15/2016, prepared by Building Drops, Inc., signed and sealed by Hermes F. Norero, P.E., bearing the Miami-Dade County Product Control Revision stamp with the Notice of Acceptance number and expiration date by the Miami-Dade County Product Control Section.

MISSILE IMPACT RATING: Large and Small Missile Impact Resistant

- Limitations:**
1. Electrical devices are not part of this approval and must be reviewed by appropriate Authority.
 2. See Design Pressure Ratings (PSF) for applicable in sheets 1 and 2. Rim exit series 8300 is limited to single door application. SVR series 8400 can be single or double door application
 3. The component Panic devices is approved as an alternate to corresponding locks of outswing commercial Steel door, having current NOA (w/ applicable steel reinforcements at lock, astragal & hinge stiles), with 18 ga (.045"min)steel door panel no wider and higher than this approved drawings in 16 ga (.053" min)steel Door frames. The Lower Design Pressure Rating of this component or impacted door (under separate approval) shall control for the system.

LABELING: Each unit shall bear a permanent label with the manufacturer's name or logo, city, state and series and following statement: "Miami-Dade County Product Control Approved", noted herein.

RENEWAL of this NOA shall be considered after a renewal application has been filed and there has been no change in the applicable building code negatively affecting the performance of this product.

TERMINATION of this NOA will occur after the expiration date or if there has been a revision or change in the materials, use, and/or manufacture of the product or process. Misuse of this NOA as an endorsement of any product, for sales, advertising or any other purposes shall automatically terminate this NOA. Failure to comply with any section of this NOA shall be cause for termination and removal of NOA.

ADVERTISEMENT: The NOA number preceded by the words Miami-Dade County, Florida, and followed by the expiration date may be displayed in advertising literature. If any portion of the NOA is displayed, then it shall be done in its entirety.

INSPECTION: A copy of this entire NOA shall be provided to the user by the manufacturer or its distributors and shall be available for inspection at the job site at the request of the Building Official.

This NOA revises & renews NOA #15-0630.07 and consists of this page 1 and evidence pages E-1, as well as approval document mentioned above.

The submitted documentation was reviewed by Ishaq I. Chanda, P.E.



10/20/16

NOA No. 16-0418.01
 Expiration Date: January 03, 2022
 Approval Date: October 27, 2016
 Page 1

Dorma Door Control, Inc.

NOTICE OF ACCEPTANCE: EVIDENCE SUBMITTED

A. DRAWINGS

1. Manufacturer's parts drawings and sections (Submitted under files below)
2. Drawing No.8000DADE Rev 4, titled "8300 Rim or 8400/8400 Series Surface vertical Rod (SVR)", sheets 1 through 2 of 2, dated 12-19-00 and last revised on 09/15/2016, prepared by Building Drops, Inc., signed and sealed by Hermes F. Norero, P.E.

B. TESTS (Submitted under files # 15-0630.07/ #11-1128.05/ #06-0912.04/ #01-0423.01)

1. Test reports on
 - 1) Air Infiltration Test, per FBC, TAS 202-94
 - 2) Uniform Static Air Pressure Test, Loading per FBC, TAS 202-94
 - 3) Water Resistance Test, per FBC, TAS 202-94 (Not Performed)
 - 4) Large Missile Impact Test per FBC, TAS 201-94
 - 5) Cyclic Wind Pressure Loading per FBC, TAS 203-94

Along with marked-up drawings and installation diagram of Dorma's series 8300 (single Rim Exit, 9400 SVR and 9400 SVR Hardware devices in 18 ga steel doors w/ 16 ga steel frames , prepared by Intertek, Test Report No. 100571083MID-001, dated 06-25-12 and revised on 05/30/13, signed and sealed by Rick Curkeet, P.E.

2. Additional Test reports per SFBC PA 201, 202 & 203-94, Test Report No. ATI-0137581.01, ATI-0137581.02 and ATI-0137581.04, prepared by Architectural Testing Laboratory, dated March 15 &16, 2001, signed and sealed by Allen N. Reeves, P.E.

C. CALCULATIONS

1. Anchor calculations complying w/ FBC 2014 (5th Edition), prepared by Building Drops, Inc., dated 03-03-2016 and last revised on 09-15-2016, signed and sealed by Hermes F. Norero, P. E.
2. Engineering evaluation of Panic Exit devices series comparison provided by Dorma Inc. (Submitted under file # 11-1128.05/# 06-0912.04 /#01-0423.01)

D. QUALITY ASSURANCE

1. Miami Dade Department of Regulatory and Economic Resources (RER).

E. MATERIAL CERTIFICATIONS

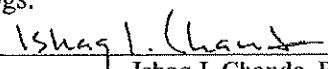
1. None.

F. STATEMENTS

1. Statement letter of conformance, complying with FBC-5th Edition (2014), and of no financial interest, dated 09/14/16, issued, signed and sealed by Hermes F. Norero, P.E.
2. Lab compliance as part of the above referenced test reports.
3. Merger agreement between Dorma Door Control Inc. and Dorma Steelville, Inc. dated Feb 28, 2003, both signed by Paul T. Kosakowaski, President Dorma (Submitted under files # 11-1128.05 /#06-0912.04)

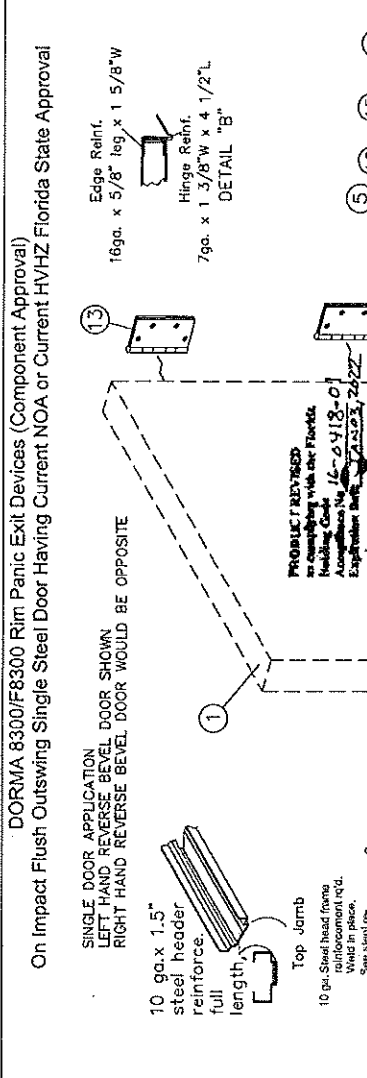
G. OTHER

1. This NOA revises & renews NOA # 15-0630.07, expiring on Jan 03, 2022.
2. Test Proposal # 11-1392 PERA & 00-0029 dated 03/07/00 approved by BCCO.
3. Dorma's panic exit device technical publications and catalogs.


Ishaq I. Chanda, P.E.
Product Control Examiner
NOA No. 16-0418.01
Expiration Date: January 03, 2022
Approval Date: October 27, 2016

BILL OF MATERIAL			
ITEM	DESCRIPTION	PART NUMBER	QTY.
1	DOOR & FRAME	Under Sep. NOA	1
2	8300/FB300 CHASSIS ASSY.	SEE NOTES	1
3	TOUCHBAR/RAIL ASSY.	SEE NOTES	1
4	THRU BOLTS		6
5	ENDCAP BRACKET		1
6	ENDCAP		1
7	OUTSIDE TRIM		1
8	CHASSIS COVER		1
9	STRIKE ANGLE		1
10	12-24 R.H.P.M.S.		6
11	8-32 T.H.P.M.S.		6
12	12-24 F.H.P.M.S.		8
13	HINGES		4
14	#463 STRIKE	SEE NOTES	1
15	END COVER		1
16	#8 X 1" F.H.W.S.		2

CHASSIS ASSEMBLY MATERIAL: STEEL BOLT 304 STAINLESS
 STRIKE MATERIAL: 701 SANDCAST MALLEABLE IRON FERRITIC GRADE 32510



GENERAL NOTES

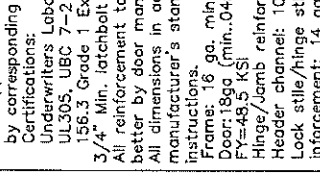
LIMITATIONS:

- Devices approved to be used as equal alternative to corresponding lock approved to be used in applic. 18ga (min. .045") w/min FY=48.5 KSI outswing steel doors holding a current NOA, lowest design pressure of door or this component will apply.
- Device shall be installed on 18ga (min. .045") w/min FY=48.5 KSI commercial steel door panel no wider or higher than shown on these approved drawings.
- Installation of this device requires steel reinforcement as indicated.
- Electrical options are not part of this approval and must be reviewed by corresponding authority.

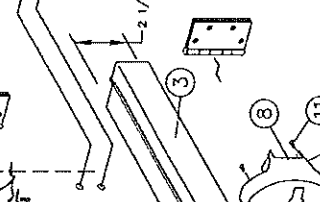
Certifications:
 Underwriters Laboratories—UL10C,
 UL30S, UBC 7-2 (1997), ANSI-BHMA
 156.3 Grade 1 Exit Hardware
 3/4" Min. latchbolt throw.
 All reinforcement to be spot welded or better by door manufacturer.
 All dimensions in accordance with manufacturer's standard installation instructions.
 Frame: 16 ga. min.
 Door: 18ga (min. .045") w/min.
 FY=48.5 KSI
 Hinge/Jamb reinforcement: As noted.
 Header channel: 10ga. x 1.5" x width.
 Lock stile/hinge stile, panic box re-
 inforcement: 14 ga min.

Outside trim may be one of the following: 80DT, 80DT1, 8003, 8P03, 8003P, K03, R03, C03, K08, R08, C08, K23, R23, or C23.
 Thrubolts must be used **ORIGINAL** install.
 Strike angel must be **ORIGINAL** install.

Building Drops, Inc.
 500 E. Dania Beach Blvd.
 Dania Beach, FL 33017
 FBPE Cert. of Authorization No. 378



8300 RIM EXIT PANIC RINGS	
DESIGN PRESSURE RATINGS	
POSITIVE	40PSF
NEGATIVE	40PSF



DESIGN PRESSURE RATINGS

POSITIVE 40PSF
 NEGATIVE 40PSF

9 ga. x 1.625" x 7.5"

Steel Jamb Reinforcement

EXCEPTION: 8300 RIM SERIES SINGLE DOOR (DADE)

MATERIAL:

COIL WIRE: _____

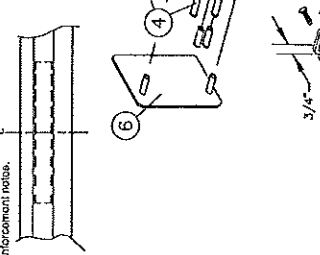
PROFESSOR: _____

MEGAFIX: _____

FINISH: _____

SCALE: NONE

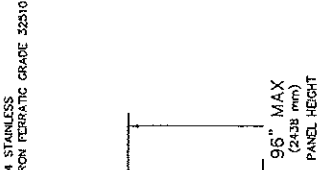
DRAWN BY: T.A. DATE: 12-19-00



DETAIL D

10 ga. steel head frame reinforcement

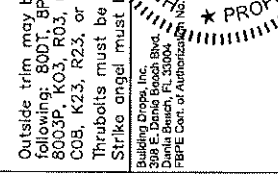
16 ga. x 1.5" steel header full length



VERTICAL REF. LINE

14ga. Min. steel strike Plate Reinf.

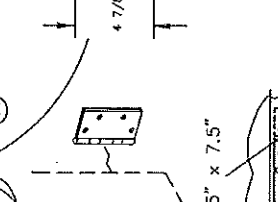
1 9/16" (40 mm) For #463 OR MULLION 5/8" MIN.



HORIZONTAL REF. LINE

40 5/16" (1024 mm)

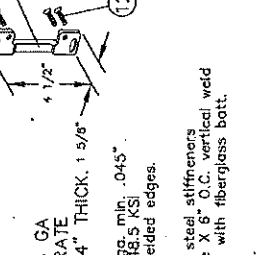
96" MAX (2438 mm) PANEL HEIGHT



FINISHED FLOOR OR THRESHOLD INT. VIEW

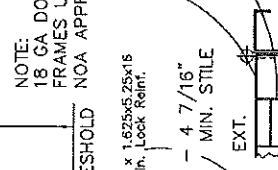
14ga x 1.625x5.25x15 Min. Lock Reinf.

4" - 4 7/16" LHRB MIN. STILE EXT.



EDGE OF STOP OR MULLION

1 9/16" (40 mm) For #463 OR MULLION 5/8" MIN.



DOOR SKIN AND HINGE FRAME (DET. C)

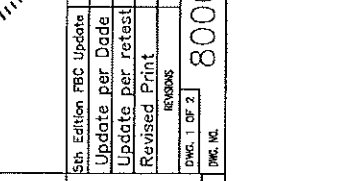
20 ga. steel stiffeners
 4" Wide X 6" O.C. vertical weld
 5" O.C. with fiberglass batt.

9 GA MIN. HINGE FRAME (DET. C)
 X 7GA. DOOR REINFORCEMENT (DET. B)
 FRAME 16 GA MIN.



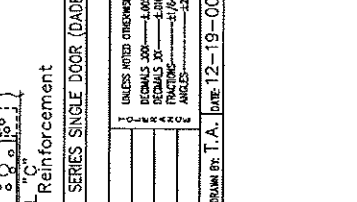
8300 RIM EXIT PANIC RINGS

4 7/8"



DETAIL C

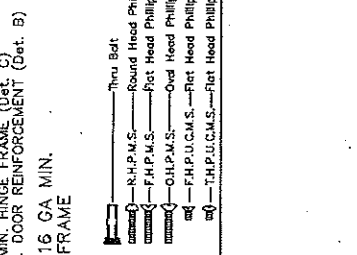
9 ga. x 1.625" x 7.5"



DETAIL D

10 ga. steel head frame reinforcement

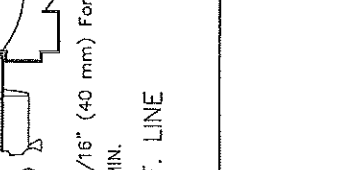
16 ga. x 1.5" steel header full length



VERTICAL REF. LINE

14ga. Min. steel strike Plate Reinf.

1 9/16" (40 mm) For #463 OR MULLION 5/8" MIN.



FINISHED FLOOR OR THRESHOLD INT. VIEW

14ga x 1.625x5.25x15 Min. Lock Reinf.

4" - 4 7/16" LHRB MIN. STILE EXT.



EDGE OF STOP OR MULLION

1 9/16" (40 mm) For #463 OR MULLION 5/8" MIN.



DOOR SKIN AND HINGE FRAME (DET. C)

20 ga. steel stiffeners
 4" Wide X 6" O.C. vertical weld
 5" O.C. with fiberglass batt.

9 GA MIN. HINGE FRAME (DET. C)
 X 7GA. DOOR REINFORCEMENT (DET. B)
 FRAME 16 GA MIN.

8300 RIM EXIT PANIC RINGS

4 7/8"

DETAIL C

9 ga. x 1.625" x 7.5"

DETAIL D

10 ga. steel head frame reinforcement

16 ga. x 1.5" steel header full length

VERTICAL REF. LINE

14ga. Min. steel strike Plate Reinf.

1 9/16" (40 mm) For #463 OR MULLION 5/8" MIN.

FINISHED FLOOR OR THRESHOLD INT. VIEW

14ga x 1.625x5.25x15 Min. Lock Reinf.

4" - 4 7/16" LHRB MIN. STILE EXT.

EDGE OF STOP OR MULLION

1 9/16" (40 mm) For #463 OR MULLION 5/8" MIN.

DOOR SKIN AND HINGE FRAME (DET. C)

20 ga. steel stiffeners
 4" Wide X 6" O.C. vertical weld
 5" O.C. with fiberglass batt.

9 GA MIN. HINGE FRAME (DET. C)
 X 7GA. DOOR REINFORCEMENT (DET. B)
 FRAME 16 GA MIN.

8300 RIM EXIT PANIC RINGS

4 7/8"

DETAIL C

9 ga. x 1.625" x 7.5"

DETAIL D

10 ga. steel head frame reinforcement

16 ga. x 1.5" steel header full length

VERTICAL REF. LINE

14ga. Min. steel strike Plate Reinf.

1 9/16" (40 mm) For #463 OR MULLION 5/8" MIN.

FINISHED FLOOR OR THRESHOLD INT. VIEW

14ga x 1.625x5.25x15 Min. Lock Reinf.

4" - 4 7/16" LHRB MIN. STILE EXT.

EDGE OF STOP OR MULLION

1 9/16" (40 mm) For #463 OR MULLION 5/8" MIN.

DOOR SKIN AND HINGE FRAME (DET. C)

20 ga. steel stiffeners
 4" Wide X 6" O.C. vertical weld
 5" O.C. with fiberglass batt.

9 GA MIN. HINGE FRAME (DET. C)
 X 7GA. DOOR REINFORCEMENT (DET. B)
 FRAME 16 GA MIN.

8300 RIM EXIT PANIC RINGS

4 7/8"

DETAIL C

9 ga. x 1.625" x 7.5"

DETAIL D

10 ga. steel head frame reinforcement

16 ga. x 1.5" steel header full length

VERTICAL REF. LINE

14ga. Min. steel strike Plate Reinf.

1 9/16" (40 mm) For #463 OR MULLION 5/8" MIN.

FINISHED FLOOR OR THRESHOLD INT. VIEW

14ga x 1.625x5.25x15 Min. Lock Reinf.

4" - 4 7/16" LHRB MIN. STILE EXT.

EDGE OF STOP OR MULLION

1 9/16" (40 mm) For #463 OR MULLION 5/8" MIN.

DOOR SKIN AND HINGE FRAME (DET. C)

20 ga. steel stiffeners
 4" Wide X 6" O.C. vertical weld
 5" O.C. with fiberglass batt.

9 GA MIN. HINGE FRAME (DET. C)
 X 7GA. DOOR REINFORCEMENT (DET. B)
 FRAME 16 GA MIN.

8300 RIM EXIT PANIC RINGS

4 7/8"

DETAIL C

9 ga. x 1.625" x 7.5"

DETAIL D

10 ga. steel head frame reinforcement

16 ga. x 1.5" steel header full length

VERTICAL REF. LINE

14ga. Min. steel strike Plate Reinf.

1 9/16" (40 mm) For #463 OR MULLION 5/8" MIN.

FINISHED FLOOR OR THRESHOLD INT. VIEW

14ga x 1.625x5.25x15 Min. Lock Reinf.

4" - 4 7/16" LHRB MIN. STILE EXT.</

GENERAL NOTES

LIMITATIONS:

- Devices approved to be used as equal alternative to corresponding lock approved to be used in appl. 18ga (min. .045") w/min Fy=48.5 KSI
- Outswing steel doors holding a current NOA, lowest design pressure of door or this component will apply.
- Device shall be installed on 18ga (min. .045") w/min Fy=48.5 KSI commercial steel door panel no wider or higher than shown on these approved drawings.
- Installation of this device requires steel reinforcement as indicated.
- Electrical options are not part of this approval and must be reviewed by corresponding authority.
- Certifications: Underwriters Laboratories—UL10C, UL305, UBC 7-2 (1997), ANSI-BHMA 156.3 Grade 1 Exit Hardware 3/4" Min. latchbolt throw.
- All reinforcement to be spot welded or better by door manufacturer.
- All dimensions in accordance with manufacturer's standard installation instructions.
- Frame: 16 ga. min.
- Door: 18ga (min. .045") w/min. Fy=48.5 KSI
- Hinge/Jamb reinforcement: As noted.
- Header channel: 10ga. x 1.5" x width.
- Lock stile/hinge stile, panic box reinforcement: 14 ga. min.
- Outside trim may be one of the following: 80DT, 80DT 8003, 8P03, 8003P, K03, R03, C03, K08, R08, C08, K23, R23, or C23.
- Thrubolts must be used on all install.
- Strike angel must be installed.

Building Dropka, Inc.
358 E. Dania Beach Blvd.
Dania Beach, FL 33009
Phone: 305-944-1778
Fax: 305-944-1779
HARDWARE DEPARTMENT

5th Edition IBC Update 4 LS 6-18-15
Update per Code 3 TA 5-2-13
Update per retest 2 TA 5-30-12
Revised Print 1 TA 9-4-01

REVISING WA BY DATE
Dwg. 2 OF 2
Dwg. No. 8000DADE

PROVIDE REVISIONS
BY DATE
REVISION NO. 14-0418-01
EXPIRATION DATE 12/31/2022
REVISED FOR PROFIT CONTROL

16ga. x 5/8" leg x 1 5/8"W
79a. x 1 3/8"W x 4 1/2"L
DETAIL "B"

Hinge Reinf.
DETAIL "B"

9 ga. x 1.625" x 7.5"
DETAIL "C"

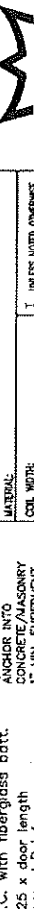
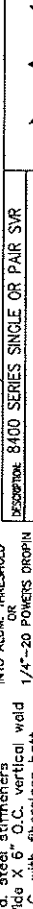
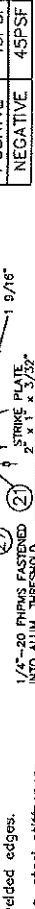
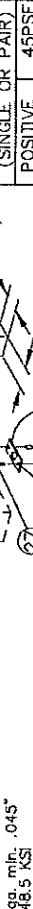
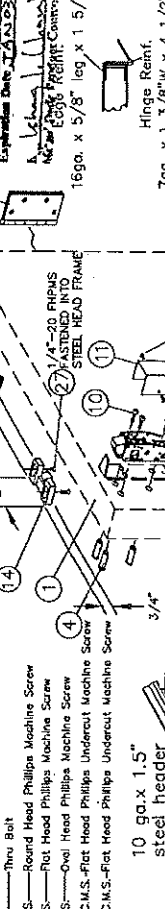
8400 SVR Panic Exit
DESIGN PRESSURE RATINGS
(SINGLE OR PAIR)
POSITIVE 45PSF
NEGATIVE 45PSF

8400 SERIES SINGLE OR PAIR SVR
MATERIAL: 16 GAGES METAL ENGINEERING
CONCRETE/MASONRY ANCHORS
PROVISIONS: 1" MIN. EMBEDMENT
FINISH: 3" MIN. EDGE DIST.
ANGLES: 45°/90°/135°

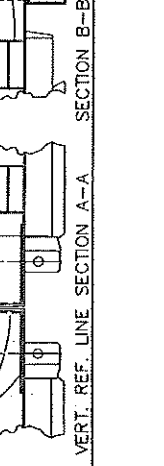
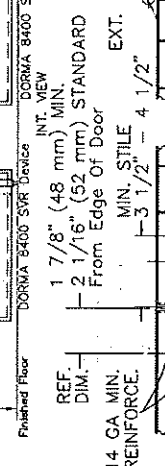
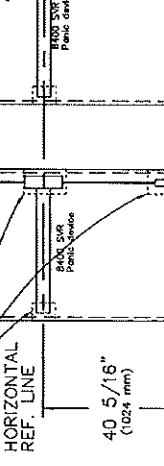
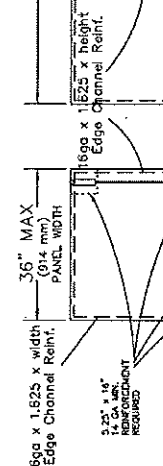
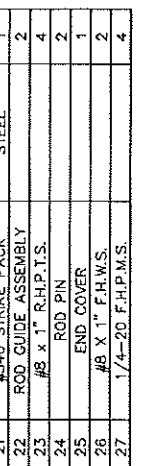
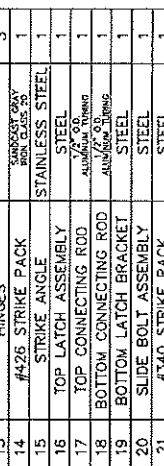
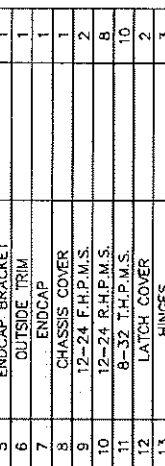
SCALE: NONE DRAWN BY: T.A. DATE: 12-20-00
DORMA DOOR CONTROLS INC
100 W. WINDYBROOK DRIVE
MARIETTA, GA 30067

DORMA 8400/F8400 Surface Vertical Rod Application
On Outswing Single And Pair Steel Doors Having Current NOA or Current HVHZ Florida State Approval

TYPICAL SURFACE VERTICAL ROD INSTALLATION
LEFT HAND REVERSE BEVEL DOOR SHOWN
RIGHT HAND REVERSE BEVEL DOOR WOULD BE OPPOSITE



ITEM	DESCRIPTION	PART NUMBER	QTY.
1	DOOR & FRAME	Under Sep. NOA	1
2	8400 CHASSIS ASSY.	STEEL	1
3	TOUCHBAR/RAIL ASSY.		1
4	THRU BOLTS		8
5	ENDCAP BRACKET		1
6	OUTSIDE TRIM		1
7	ENDCAP		1
8	CHASSIS COVER		2
9	12-24 F.H.P.M.S.		8
10	8-32 T.H.P.M.S.		10
11	LATCH COVER		2
12	HINGES		3
13	#426 STRIKE PACK		1
14	STAINLESS STEEL		1
15	TOP LATCH ASSEMBLY		1
16	TOP CONNECTING ROD		1
17	BOTTOM CONNECTING ROD		1
18	BOTTOM LATCH BRACKET		1
19	SLIDE BOLT ASSEMBLY		1
20	#340 STRIKE PACK		1
21	ROD GUIDE ASSEMBLY		2
22	#8 x 1" R.H.P.T.S.		4
23	ROD PIN		2
24	END COVER		1
25	#8 X 1" F.H.W.S.		2
26	1/4-20 F.H.P.M.S.		2
27			4



REF. DIM. 1 7/8" (48 mm) MIN. 2 1/16" (52 mm) STANDARD From Edge Of Door

EXT. MIN. STILE 4 1/2" 3 1/2"

14 GA MIN. REINFORCE.

16 ga. min. Frame

8400 SVR Device

INT. VIEW

8400 SVR Panic device

8400 SVR Panic device

8400 SVR Panic device