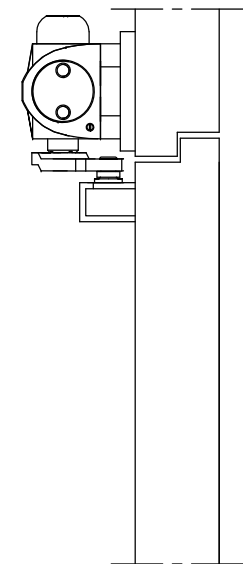
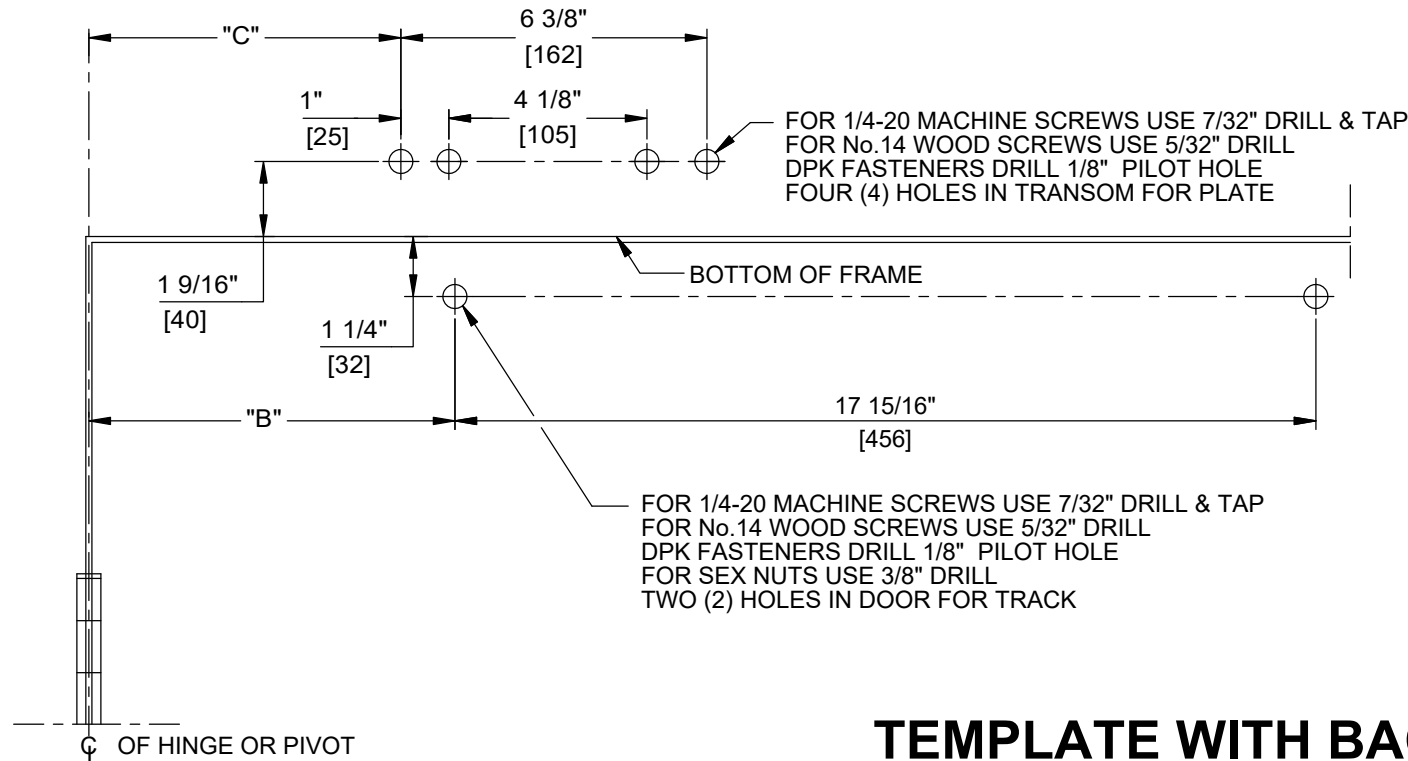


NOTES:

1. DO NOT SCALE DRAWING.
2. DIMENSIONS ARE IN INCHES/(MM).
3. LEFT HAND DOOR SHOWN.
4. CAUTION: SEX NUTS ARE REQUIRED FOR ATTACHMENT OF COMPONENTS TO UNREINFORCED DOORS AND TO WOOD OR PLASTIC FACED COMPOSITE TYPE FIRE DOORS, UNLESS AN ALTERNATIVE METHOD IS IDENTIFIED IN THE INDIVIDUAL DOOR MANUFACTURER'S LISTINGS.
5. OPTIONAL DPK FASTENERS (DPK86) FOR STEEL DOOR & FRAME ONLY.
6. MAX. OPENING IS 140°.

ANGLE OF OPENING	DIM. "C" PLATE	DIM. "B" TRACK	HOLD OPEN RANGE
85°	5-9/16 (141)	7-1/8 (181)	30°-82°
90°	5-1/16 (129)	6-13/16 (173)	30°-87°
110°	4-1/16 (103)	5-1/2 (140)	30°-105°
140°	3-1/8 (79)	4-3/4 (121)	30°-125°



## TEMPLATE WITH BACKPLATE

DOOR CLOSER MODELS: 7436 FT, FTH  
FLUSH TRANSOM TRACK INSTALLATION (PUSH SIDE MOUNT)  
WITH PLATES BP74T, BP86T, BP86TFC



dormakaba USA Inc  
800 523 8483