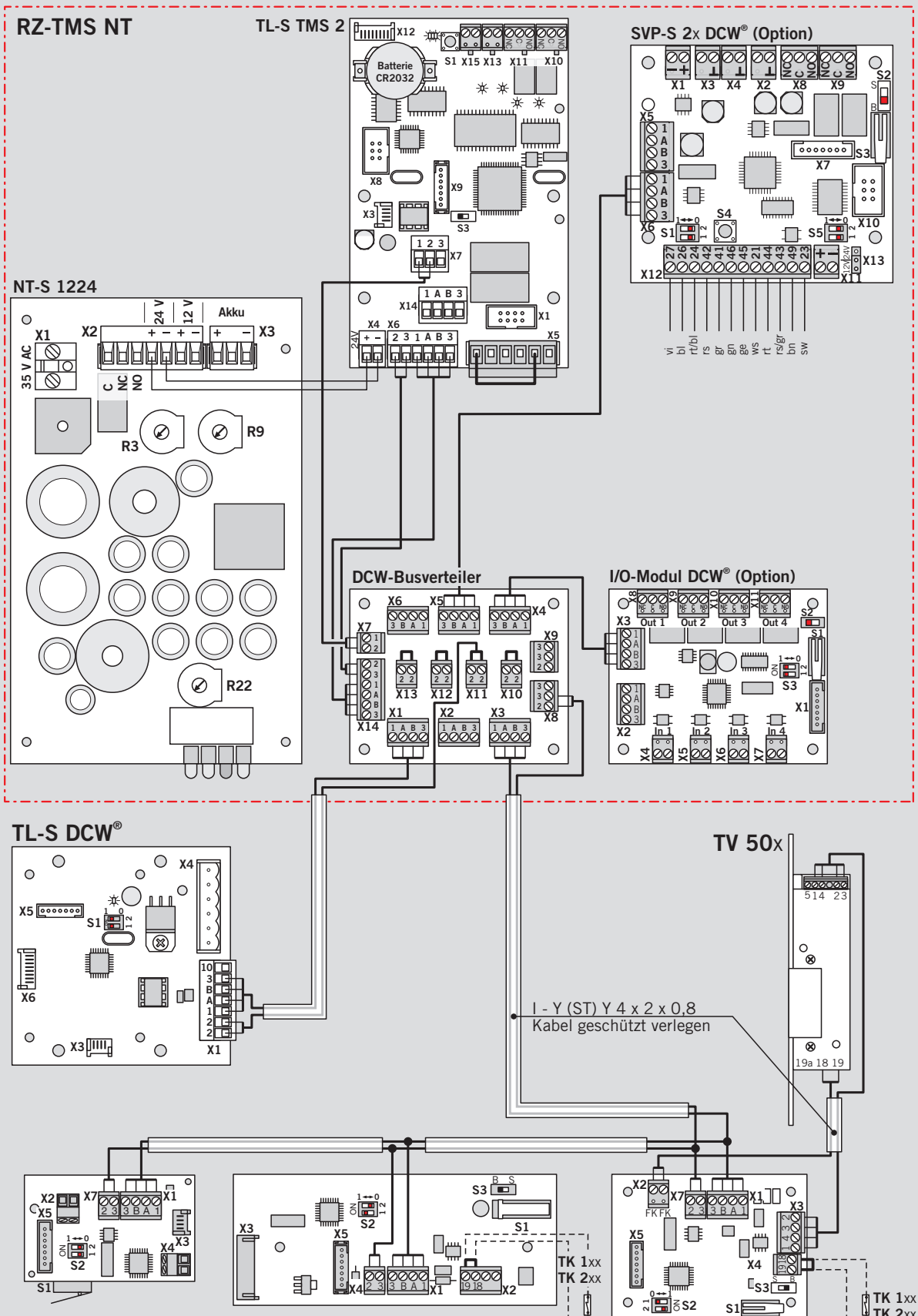


WN 056536-45632
06/09

RZ-TMS NT + TL-S DCW® + TV_{XXX} + SVP-S DCW® (Option)

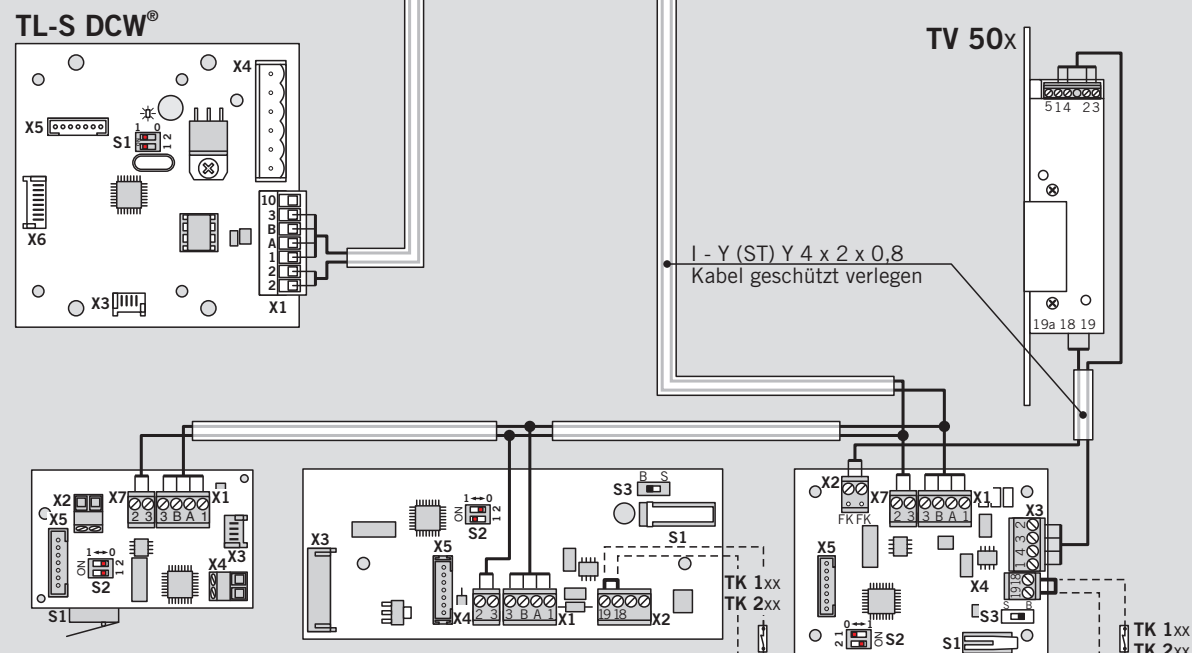
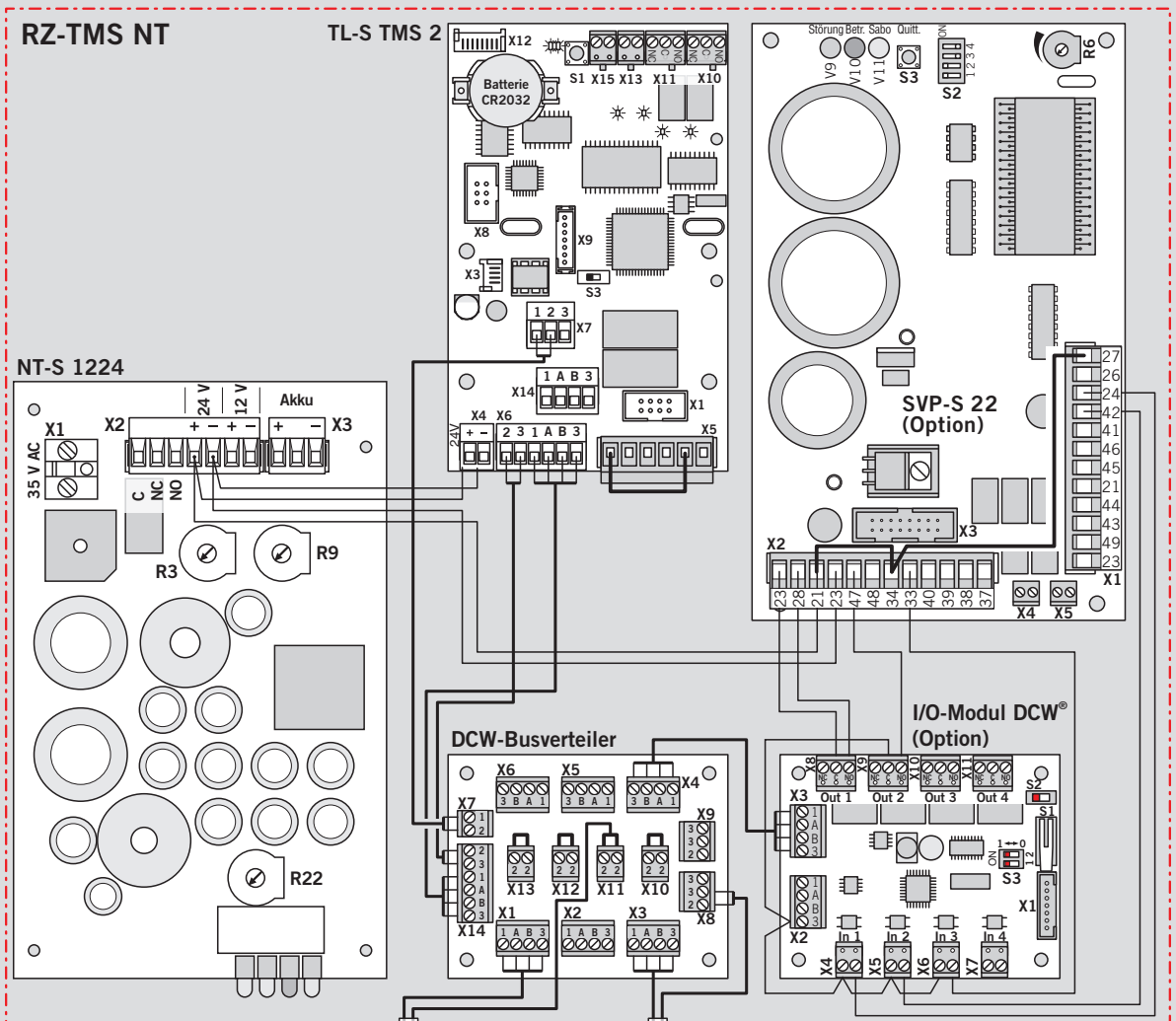


1 TV 1xx DCW® -- und/oder -- TV 2xx DCW® -- und/oder -- TV 50x DCW®

TK 1xx
TK 2xx

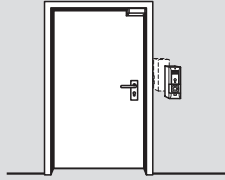
TK 1xx
TK 2xx

RZ-TMS NT + TL-S DCW® + TV_{XXX} + SVP-S 22



2 TV 1xx DCW® -- und/oder -- TV 2xx DCW® -- und/oder -- TV 50x DCW®

RZ-TMS NT + 2x TL-S DCW® + TV 1xx



RZ-TMS NT

TL-S TMS 2

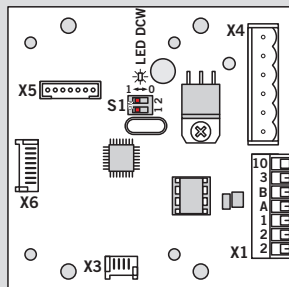
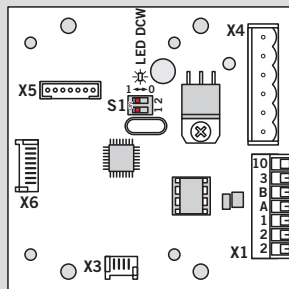
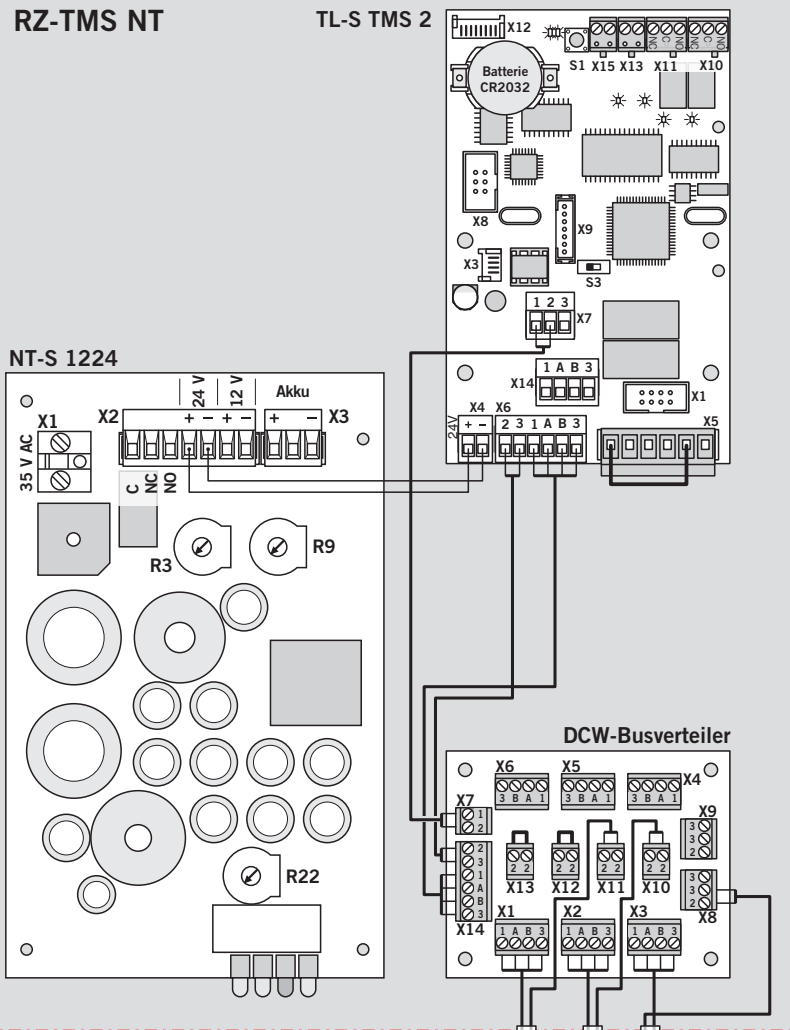
NT-S 1224

DCW-Busverteiler

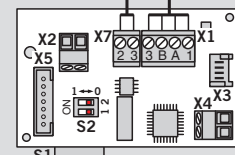
TL-S DCW®

TL-S DCW®

TV 1xx DCW®



I - Y (ST) Y 4 x 2 x 0,8
Kabel geschützt verlegen



Anderungen vorbehalten
Subject to change without notice