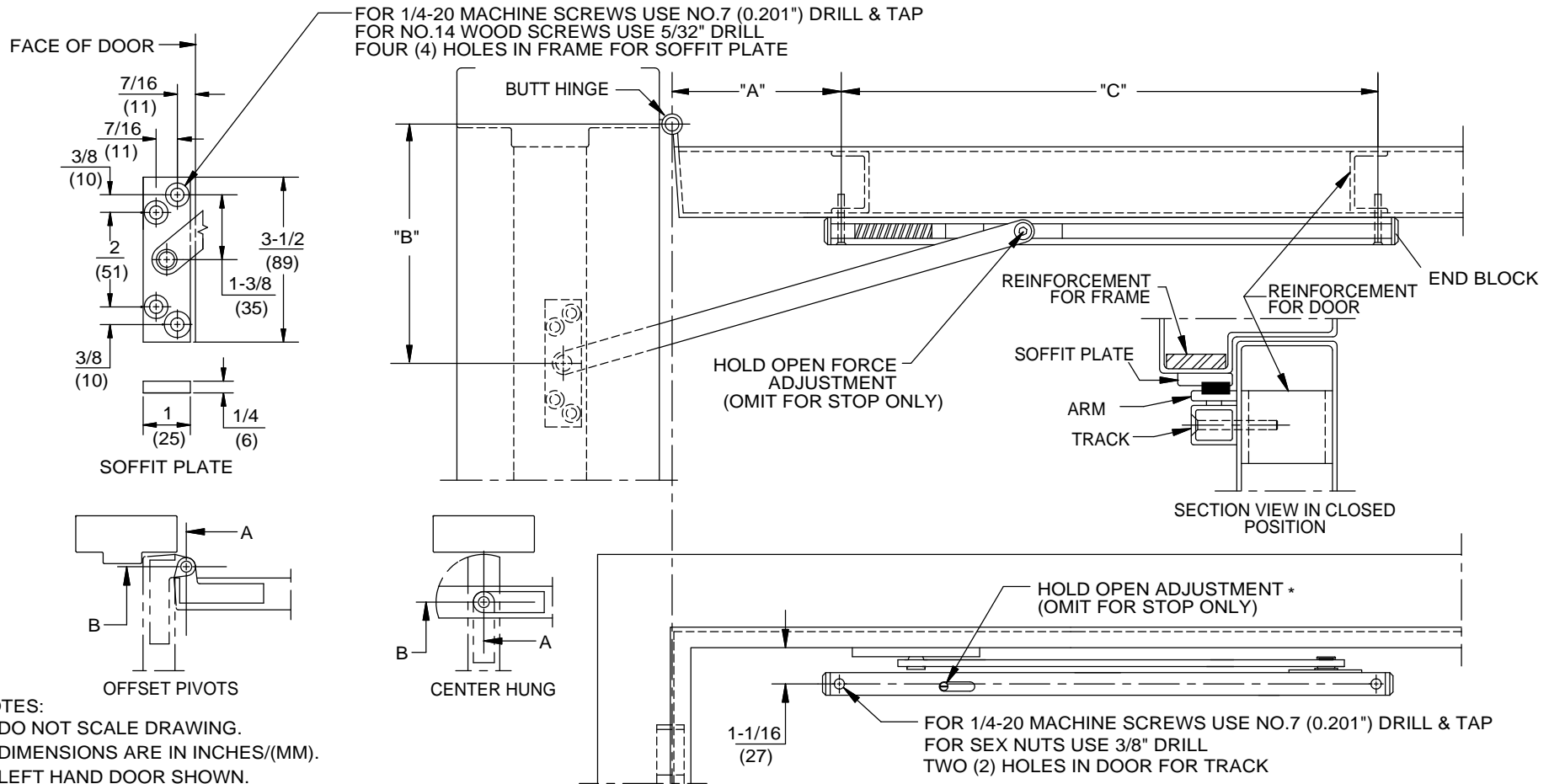


INSTALLATION INSTRUCTIONS:

1. Determine unit type: (S) STOP ONLY or (H) STOP & HOLD.
2. Determine degree of hold-open or dead stop required and select the "A", "B" and "C" dimensions from the opposite side of this page.
3. Prepare door and frame according to the template found on this page.
4. Place end blocks into each end of track. Attach track and arm assembly to door, making sure spring faces toward hinges.
5. Attach soffit plate to frame.

*** ADDITIONAL INSTRUCTIONS (HOLD-OPEN UNITS):**

6. Adjust hold-open to on or off position. One direction on-opposite direction off.
7. Adjust the holding force by inserting a 5/64" hex key into the slide shoe bolt. Turn right to increase and left to decrease holding force.
8. Open door until slide shoe engages with hold-open.
9. To release the door, pull until the slide shoe disengages.



- NOTES:**
1. DO NOT SCALE DRAWING.
 2. DIMENSIONS ARE IN INCHES/(MM).
 3. LEFT HAND DOOR SHOWN.

STOP AND HOLDER SERIES: 701H - 703H, 701S - 703S
STANDARD DUTY SURFACE APPLIED STOP/HOLDER
PUSH SIDE MOUNT
CENTER HUNG, 3/4" OFFSET AND 4-1/2" x 4-1/2" HINGES



DORMA Architectural Hardware
Reamstown, PA 17567

**700S, 700H SERIES
STANDARD DUTY SURFACE OVERHEAD STOP AND HOLDER**



UNIT	DEGREE OF OPENING	4-1/2" HINGES OR 3/4" PIVOTS			CENTER HUNG			DIM "C"	DEGREE OF OPENING	UNIT
		DOOR RANGE	DIM "A"	DIM "B"	DOOR RANGE	DIM "A"	DIM "B"			
701 S	85° STOP ONLY	21 to 27	3-1/4	4-1/2	24 to 28	4-7/16	4-1/2	14-3/4	85° STOP ONLY	701 S
	90° STOP ONLY		2-7/8	4-1/2		4-1/16	4-1/2		90° STOP ONLY	
	95° STOP ONLY		2-1/2	4-1/2		3-3/4	4-1/2		95° STOP ONLY	
	100° STOP ONLY		2-1/4	4-1/2		3-7/16	4-1/2		100° STOP ONLY	
	105° STOP ONLY		2	4-1/2		3-1/8	4-1/2		105° STOP ONLY	
	110° STOP ONLY		1-5/8	4-1/2		2-7/8	4-1/2		110° STOP ONLY	
701 H	85° STOP & HOLD	21 to 27	2-1/2	4-1/2	24 to 28	3-3/4	4-1/2	14-3/4	85° STOP & HOLD	701 H
	90° STOP & HOLD		2-1/8	4-1/2		3-3/8	4-1/2		90° STOP & HOLD	
	95° STOP & HOLD		1-13/16	4-1/2		3-1/16	4-1/2		95° STOP & HOLD	
	100° STOP & HOLD		1-9/16	4-1/2		2-3/4	4-1/2		100° STOP & HOLD	
	105° STOP & HOLD		1-3/8	4		2-7/16	4-1/2		105° STOP & HOLD	
	110° STOP & HOLD		1-1/8	4		2-3/16	4-1/2		110° STOP & HOLD	
702 S	85° STOP ONLY	27-1/8 to 36	6	6-3/4	28-1/8 to 36	7-3/16	6	17-1/4	85° STOP ONLY	702 S
	90° STOP ONLY		5-3/8	6-3/4		6-3/4	6		90° STOP ONLY	
	95° STOP ONLY		4-15/16	6-3/4		6-1/4	6		95° STOP ONLY	
	100° STOP ONLY		4-15/16	5-1/2		5-7/8	6		100° STOP ONLY	
	105° STOP ONLY		4-5/8	5-1/2		5-5/16	6		105° STOP ONLY	
	110° STOP ONLY		4-1/4	5-1/2		5-1/16	6		110° STOP ONLY	
702 H	85° STOP & HOLD	27-1/8 to 36	5-7/16	5-1/2	28-1/8 to 36	6-1/8	7	17-1/4	85° STOP & HOLD	702 H
	90° STOP & HOLD		5	5-1/2		5-5/8	7		90° STOP & HOLD	
	95° STOP & HOLD		4-5/8	5-1/2		5-1/16	7		95° STOP & HOLD	
	100° STOP & HOLD		4-1/4	5-1/2		5-1/8	6		100° STOP & HOLD	
	105° STOP & HOLD		3-7/8	5-1/2		4-3/4	6		105° STOP & HOLD	
	110° STOP & HOLD		3-9/16	5-1/2		4-3/8	6		110° STOP & HOLD	
703 S	85° STOP ONLY	36-1/8 to 54	9-1/2	9-1/8	36-1/8 to 54	9-1/2	10	20-3/4	85° STOP ONLY	703 S
	90° STOP ONLY		8-3/4	9-1/8		8-11/16	10		90° STOP ONLY	
	95° STOP ONLY		8-1/8	9-1/8		7-15/16	10		95° STOP ONLY	
	100° STOP ONLY		8	8-1/8		7-15/16	9		100° STOP ONLY	
	105° STOP ONLY		7-5/16	8-1/8		7-5/16	9		105° STOP ONLY	
	110° STOP ONLY		7	8-1/8		6-13/16	9		110° STOP ONLY	
703 H	85° STOP & HOLD	36-1/8 to 54	9-13/16	9-1/8	36-1/8 to 54	9-5/16	10	20-3/4	85° STOP & HOLD	703 H
	90° STOP & HOLD		8-1/8	9-1/8		8-1/2	10		90° STOP & HOLD	
	95° STOP & HOLD		7-7/16	9-1/8		7-3/4	10		95° STOP & HOLD	
	100° STOP & HOLD		7-5/16	8-1/8		8	8-1/2		100° STOP & HOLD	
	105° STOP & HOLD		6-13/16	8-1/8		7-7/16	8-1/2		105° STOP & HOLD	
	110° STOP & HOLD		6-5/16	8-1/8		6-15/16	8-1/2		110° STOP & HOLD	

- a. All 4-1/2" WIDE HINGE and 3/4" OFFSET PIVOT dimensions are for 1-3/4" thick doors, CENTER HUNG are for 1-3/4" to 2-1/4" thick doors. For additional door thicknesses consult DORMA's Technical Services department.
- b. STOP is the maximum degree to which the door will open when the shock spring is fully compressed.
- c. STOP & HOLD is the degree the door is held open. The shock absorber spring compresses while the door moves to the dead stop position which is several degrees greater.
- d. All values are in inches.



DORMA Architectural Hardware
Reamstown, PA 17567