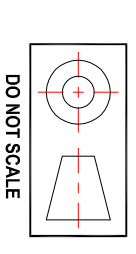


PART No.

PROJECT:
DESIGNED:
CHECKED:
APPROVED:
DRAWN: L.R.HAJDU
SCALE: 1:1
DATE: 18-10-2010

WITHIN 0.01 ANY DIAMETER TO CENTER LINE
WITHIN 0.01 ANY FACE TO CENTER LINE
ALL DIMENSIONS IN MILLIMETRES UNLESS OTHERWISE SPECIFIED
TOLERANCES: ±0.1
UNLESS OTHERWISE SPECIFIED
MACHINING SURFACE FINISH: 3.2
UNLESS OTHERWISE SPECIFIED
HEAT TREATMENT:
NIL

REMOVE ALL BURRS, SHARP CORNERS AND PROCESSING RESIDUE DRAWN TO AS1100 DIMENSIONS IN MILLIMETRES



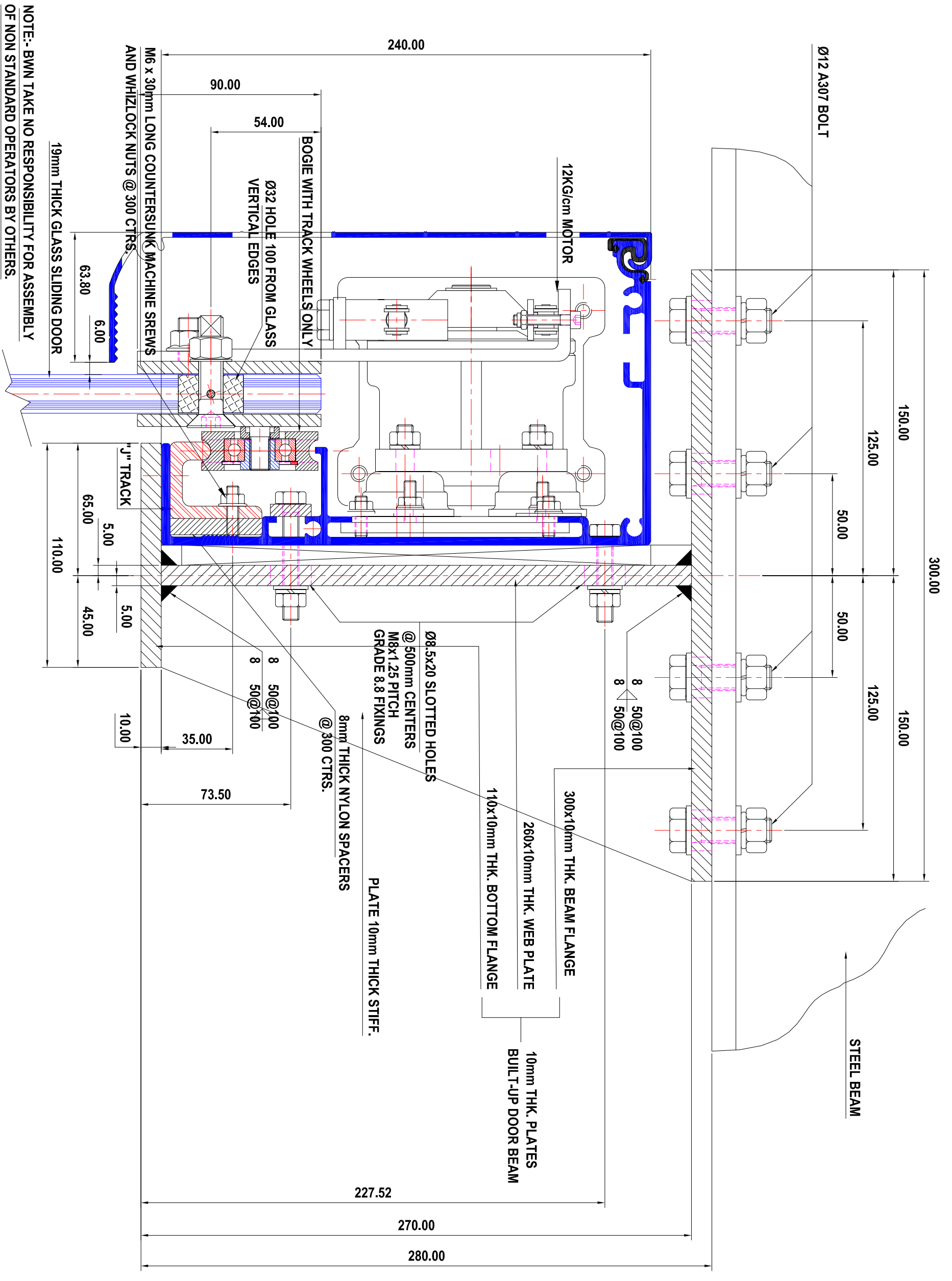
DORMA Automatics Pty. Ltd.
VICTORIA 3202
HARVEY MANSFIELD 3885
PHONE: (03) 9786 3717
FAX: (03) 9786 4111
WEB SITE: www.dorma.com.au
DORMA Automatics Pty. Ltd.

DORMA Automatics Pty. Ltd.
PROPRIETARY RIGHTS RESERVED. THIS DRAWING IS THE PROPERTY OF DORMA AUTOMATICS. NO MANUFACTURE OR REPRODUCTION SHOULD BE MADE WITHOUT THE WRITTEN CONSENT OF DORMA AUTOMATICS. ALL RIGHTS RESERVED.

THIS DOCUMENT CONTAINS CONFIDENTIAL INFORMATION WHICH MUST NOT BE COPIED WHOLLY OR IN PART NOR DISCLOSED TO ANY PERSON WITHOUT OUR PRIOR AUTHORITY IN WRITING.
© DORMA Automatics Pty. Ltd. 2002.

DISCLAIMER:
ALL ILLUSTRATIONS AND SPECIFICATIONS PRESENTED IN THIS DRAWING ARE A GUIDE ONLY FOR THE INSTALLATION OF DORMA AUTOMATIC DOOR OPERATORS. THESE ARE BASED ON THE LATEST PRODUCT INFORMATION AVAILABLE AT THE TIME OF DESIGN. DORMA AUTOMATICS ACCEPTS NO LIABILITY FOR PERFORMANCE AND SITE CONDITIONS MUST BE COMPLETED BY A QUALIFIED STRUCTURAL ENGINEER.

GENERAL NOTES



NOTE:- BWN TAKE NO RESPONSIBILITY FOR ASSEMBLY OF NON STANDARD OPERATORS BY OTHERS.

REV.	ZONE	ITEM	DATE	AMENDMENT

ITEM	QTY.	MATERIAL	FINISH	DESCRIPTION	PART No.	DRAWING No.
1	1	AL	A1	AL SERIES AUTOMATIC DOOR OPERATOR WITH 'J' TRACK TO SUPPORT 450KG DOORS	1C1-01-067	