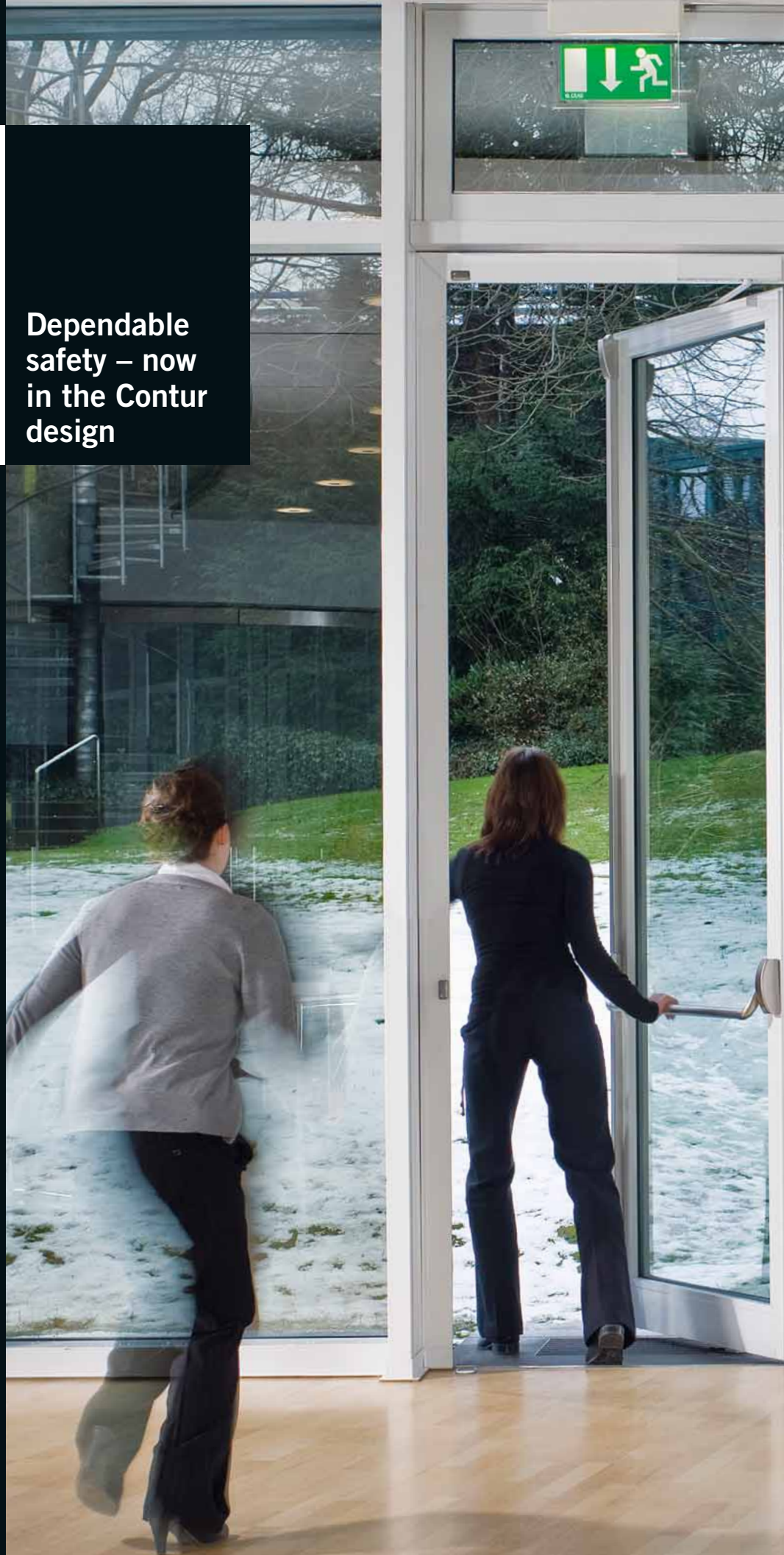


**PHA 2000
PHB 3000
Exit Pad**

**Dependable
safety – now
in the Contur
design**





Whether in airports, schools or hospitals – DORMA panic hardware ensures reliable emergency exit and escape route safety.

EN 1125



Maximum safety not an option.



Systematic protection compliant with EN 1125.

The correct and dependable functioning of emergency exits and escape routes is vital to the safety of users.

The optimum solution: DORMA modular panic hardware systems, tested and certified to the highest specification class in accordance with EN 1125. Ensuring ease of egress in the event of an emergency, they serve to protect life and limb. Today buildings such

as airports and hospitals depend on such products. Equipped with a horizontal actuation bar, they offer a high level of safety compliant with EN 1125. All buildings will benefit from the quality and reliability of these emergency exit devices.

The DORMA PHA 2000 and PHB 3000 modular systems in the Contur design.

A customised solution for every building – for safety without compromise.

DORMA's modular panic hardware system comprises a complete range of high-quality fittings with horizontal and vertical locks for emergency exits and escape route doors in public buildings such as schools, hospitals and hotels. Aligned to the

application, DORMA offers the PHA 2000 version with crossbar actuation and the PHB 3000 version with pushbar actuation – both compliant with EN 1125. The PHA 2000 and PHB 3000 are complemented by the PHT external hardware series with elegant lever handles or knobs that can be mixed and matched as required. For enhanced safety

and with characteristic end caps in the elegant DORMA Contur design.

Dependable protection – when it matters.

The DORMA quality standard offers dependable operation in the event of an emergency and thus the reliable protection of human life.

PHA 2000 with crossbar actuation.



PHB 3000 with pushbar actuation.



**DORMA PHA 2000
and PHB 3000
in the
Contur design**

DORMA in the Contur design – for visual consistency throughout.



reddot design award

e.g. for the TS 97 in the Contur design



**JANUS
DE L'INDUSTRIE**

e.g. for the PORTEO and
the PHA 2000/PHB 3000
in the Contur design

Design perfection.

The DORMA Contur design embodies an unmistakable visual style. Clean, clear and elegant, its essential attributes are both distinctive and appealing, with each and every product a perfect interplay of homogenous proportions, cubic styling and handcrafted quality. This characteristic design ensures that DORMA products harmonise elegantly

with the building as a whole while contributing to a consistent visual appearance to reinforce its aesthetic clarity. Products in the DORMA Contur design have been recognised with a number of accolades including the reddot design award and the Janus de l'Industrie.



A perfect combination of form and function: the DORMA TS 97 in the Contur design is an outstanding architectural solution in every respect.

Panic hardware that also looks good.

The PHA 2000 and PHB 3000 modular panic hardware systems in the modern Contur design.

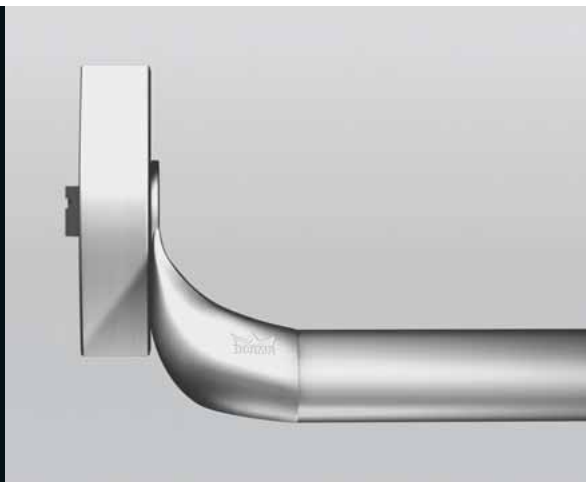
The unmistakable appearance of emergency exits is particularly important. For safety reasons, they must be immediately identifiable should the worst occur. In visual terms, however, they should also contribute to the building's individual

character – national and international airports are a case in point. The PHA 2000 and PHB 3000 modular panic hardware systems also satisfy such requirements. The DORMA Contur design is typified by its distinctive cubic styling. Its characteristic lines are the epitome of elegance and quality, confirmed by the brand logo stamped on the base profile.

Stainless steel finish for a first-class appearance.

Quality is also expressed by the choice of the material used. The PHA 2000 and PHB 3000 modular panic hardware systems are available in a stainless steel finish, in addition to the standard colours, further underlining the unique commitment to design excellence inherent in this system.

PHA 2000



PHA 2000 and PHB 3000: cubic styling with clean lines.

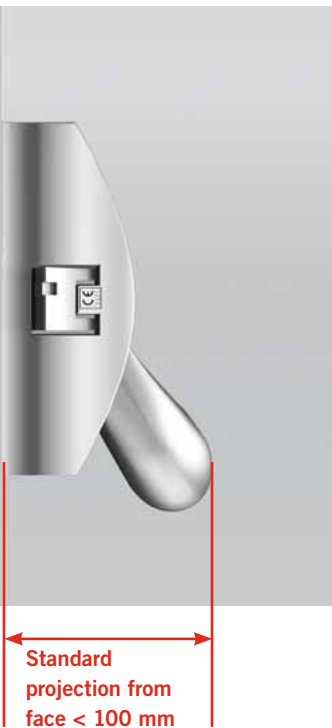


PHB 3000 with end caps in the DORMA Contur design.



PHB 3000

PHA 2000



Proven technology, dependable, straightforward operation – the PHA 2000 and PHB 3000.

Elegant: standard projection from face < 100 mm.

The high-quality DORMA PHA 2000 Crossbar and PHB 3000 Pushbar modular systems unite protection of human life with improved technology that includes a standard projection of < 100 mm from the door face.

The many benefits at a glance:

- Standardised range of accessories for top and bottom locks and exterior hardware for reduced stocking costs
- Safety-tested to EN 1125
- CE marked
- Excellent reliability
- Choice of lock options
- Award-winning DORMA Contur design
- No visible fixings
- Dogging device as standard
- Rapid, professional installation and easy adaptation to different door widths and heights
- Straightforward, dependable handling
- Excellent durability
- Quality assurance to ISO 9001
- Suitable for fire, smoke check and standard doors



Standard projection from face < 100 mm

Versatile in use – e.g. the PHA 2000.

Different profile types and arrangements require different solutions. With adjustable latch keepers and our universal electric strike, the DORMA PHA 2000 panic hardware system is ideal for narrow-framed doors, while the PHB 3000 system is highly suited to solid timber doors.

PHB 3000 – with concealed fixings and dogging device.

Safety in a thoroughly elegant package. The cubic styling and signature perforated end caps of the PHB 3000 panic fitting in the DORMA Contur design conceal the components necessary for dependable operation. The fixings and the dogging device, provided as standard, thus remain

attractively concealed. The PHB 3000 also clearly conveys its safety function through its visual appearance.

- Safe and elegant – integrated PHB 3000 technology concealed from view.



Whether on timber, narrow-framed or glazed doors, the DORMA panic hardware system always fits perfectly.



Flexible in service with precision built in.

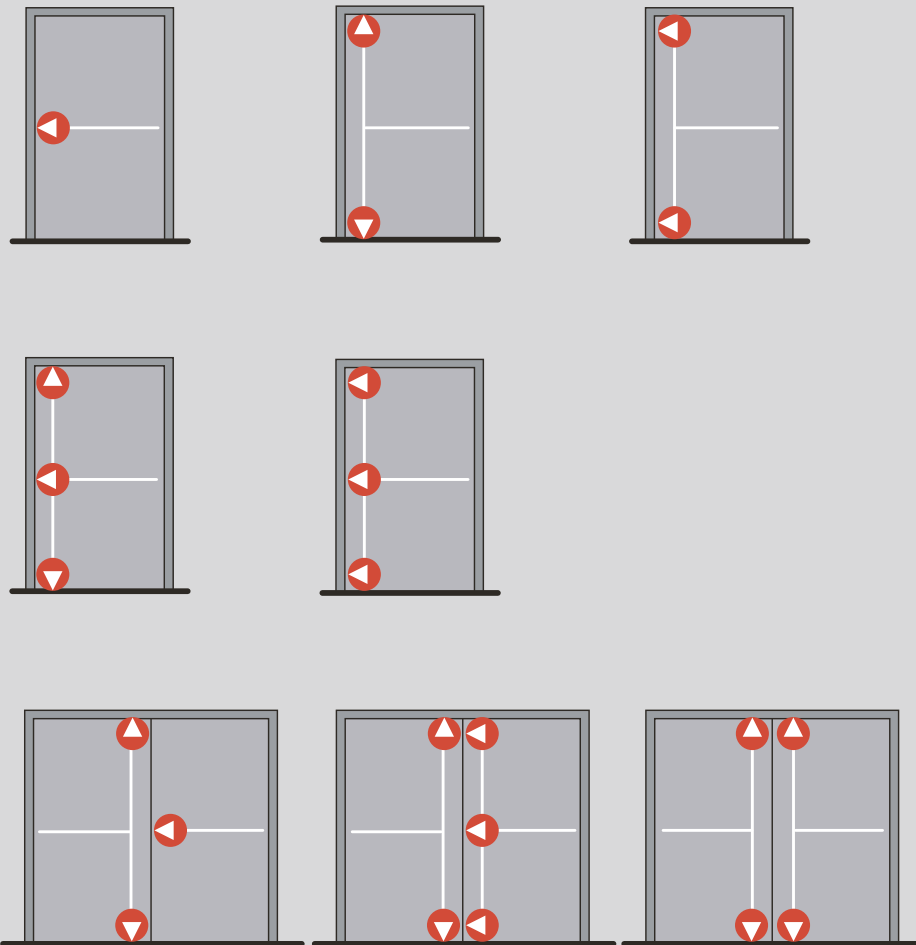


**Fit for purpose –
from timber doors to
multi-point locking.**

The DORMA PHA 2000 Crossbar and PHB 3000 Pushbar panic hardware offer uncompromising dependability and can be tailored for use in almost any application.

All the lock types can be used for every type of door – RH or LH, narrow-framed or solid timber, single or double, and with flush or over-rebated meeting stiles. Modular expansion from single-point to two-point and multi-point locking is also available.

Customised applications – for single-point, two-point and multi-point locking.



PHA 2000 and PHB 3000.
Perfect in conjunction with
the PORTEO door assistant
or the CD 80 automatic
swing-door operator.



Mix and match with a variety of DORMA products – for a consistent safety system.

Through their quality, DORMA products deliver truly excellent system solutions – which means they can always be relied upon to work as an efficiently functioning whole. That includes the PHA 2000

and the PHB 3000. For instance, in conjunction with the PORTEO door assistant or the CD 80 automatic swing door operator, they afford an appropriate level of door safety in accordance with German standard DIN 18650.

All the benefits of a modular system.

DORMA's PHA 2000 Crossbar and the PHB 3000 Pushbar panic hardware systems come with a standardised range of accessories – for reduced stocking, increased efficiency and fewer worries.

EN 179



DORMA Exit Pad. Safety to EN 179.

Emergency exits protected per EN 179.

European standard EN 179 allows the use of emergency exit devices with a lever handle or push pad in buildings such as private dwellings and non-public offices that are occupied by people familiar with the use of this type of door furniture. Here too DORMA's tested and certified panic hardware systems offer the right kind of individual solution for an exceptionally wide range of applications.

Opening the door with effortless ease – the DORMA Exit Pad.

DORMA panic hardware can also be fitted with an optional exit pad compliant with EN 179. It is installed on the surface of the door leaf. The latch is secured within a keeper on the door frame. And the Exit Pad also comes in the elegant DORMA Contur design for styling consistency. It can likewise be combined with external fittings of the PHT hardware range.

For easier opening.
The Exit Pad complies with EN 179.

The ideal complement – quality accessories and PHT external hardware.

Accessories that integrate perfectly.

- Top/bottom locks and connector rods
- Universally applicable for PHA 2000/PHB 3000/Exit Pad systems
- Versions with vertical and horizontal latch
- Latch models in steel or die-cast zinc
- In the elegant DORMA Contur design (electric strike as well)

PHT external hardware series – for a safe whole.

To ensure a consistent overall appearance, the PHA 2000, PHB 3000 and Exit Pad can be ideally complemented with our various interchangeable PHT external fittings – also typified by the DORMA Contur design. An integral appearance is achieved with – for example – our 8830 standard-design lever handle or 8020 K knob, for a system offering visual harmony as well as a high level of safety and quality.



Knobs and lever handles available for system integration.





DORMA worldwide

Central Europe

DORMA GmbH+Co. KG
DORMA Platz 1
D-58256 Ennepetal
Phone +49 2333 793-0
Fax +49 2333 793-495

Australia

DORMA Door Controls Pty. Ltd.
P.O. Box 1092
Narre Warren Vic 3805
52 Abbott Road
Hallam/Victoria 3803
Australia
Phone +61 3 97963555
Fax +61 3 97963955

DORMA Automatics Pty. Ltd.

46-54, Abbott Road
Hallam/Victoria 3803
Australia
Phone +61 3 97964111
Fax +61 3 97963767

China

DORMA Door Controls Co. Ltd.
No. 9, Hong Feng Road
Suzhou Singapore Industrial Park
Suzhou, 215021
P.R. of China
Phone +86 512 67612481
Fax +86 512 67614582

DORMA Door Controls Pte. Ltd.

Room 701, Technology Plaza
651 King's Road
North Point
Hong Kong
Phone +852 25034632
Fax +852 28875370

Emerging Markets

DORMA GmbH+Co. KG
DORMA Platz 1
D-58256 Ennepetal
Phone +49 2333 793-0
Fax +49 2333 793-495

DORMA Door Controls (Pty.) Ltd.

Kings Court, 4A Mineral Crescent
ZA-2135 Southdale
South Africa
Phone +27 11 8300280
Fax +27 11 8300291

Far East

DORMA Door Controls Pte. Ltd.
No. 2 Jalan Terusan, Jurong
Singapore 619285
Phone +65 62687633
Fax +65 62657914

France

DORMA France S.A.S.
Europarc
42, rue Eugène Dupuis
F-94046 Créteil Cédex
Phone +33 1 41 94 24 00
Fax +33 1 41 94 24 01

DORMA Accueil S.A.S.

ZAC de l'Echangeur
F-73100 Grésy-sur-Aix
Phone +33 4 79348924
Fax +33 4 79348923

Gulf

DORMA Gulf Door Controls FZE
Jebel Ali Free Zone
Roundabout 8,
Unit VC 02,
P.O. Box 17268
Jebel Ali, Dubai
United Arab Emirates
Phone +971 48 839014
Fax +971 48 839015

DORMA Arabia Automatic Doors Ltd.

P.O. Box 1633
Dammam 31441
Kingdom of Saudi Arabia
Phone +9663 847 2394
Fax +9663 847 2368

North America

DORMA Architectural Hardware
Steeleville Division
DORMA Drive, Drawer AC
Reamstown, PA 17567, USA
Phone +1 717 336-3881
Fax +1 717 336-2106

DORMA Automatics Inc.

924 Sherwood Drive
Lake Bluff, Illinois 60044, USA
Phone +1 847 295-2700
Fax +1 847 295-5288

Scanbalt

DORMA Sverige AB
F O Petersons gata 24
SE-421 31 Västra Frölunda
Phone +46 31 289520
Fax +46 31 281739

South America

DORMA Sistemas de Controles
para Portas Ltda.
Av. Piracema, 1400
Centro Empresarial Tambore
CEP 06400 São Paulo, Brasil
Phone +55 11 46899128
Fax +55 11 46899260

South-East Europe

DORMA Austria GmbH
Pebering Strass 22
A-5301 Eugendorf
Phone +43 6225 28488
Fax +43 6225 28491

DORMA AKS Automatic GmbH

Pebering Strass 22
A-5301 Eugendorf
Phone +43 6225 8636-0
Fax +43 6225 2659-0

South Europe

DORMA Italiana S.r.l.
Via A. Canova 44/46
I-20035 Lissone (MI)
Phone +39 039 244031
Fax +39 039 24403310

DORMA Ibérica, S.A.

Camino San Martín de la Vega, 4
E-28500 Arganda del Rey (Madrid)
Phone +34 91 8757850
Fax +34 91 8757881

UK/Ireland

DORMA UK Limited
Wilbury Way, Hitchin
Hertfordshire SG4 0AB
Phone +44 1462 477600
Fax +44 1462 477601

<http://www.dorma.com/panic-hardware/en>



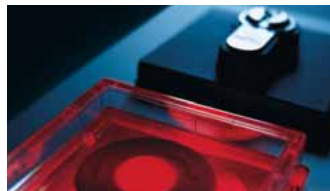
Door Control



Automatic



Glass Fittings and Accessories



Security/Time and Access Control (STA)



Movable Walls



4 021226 271544