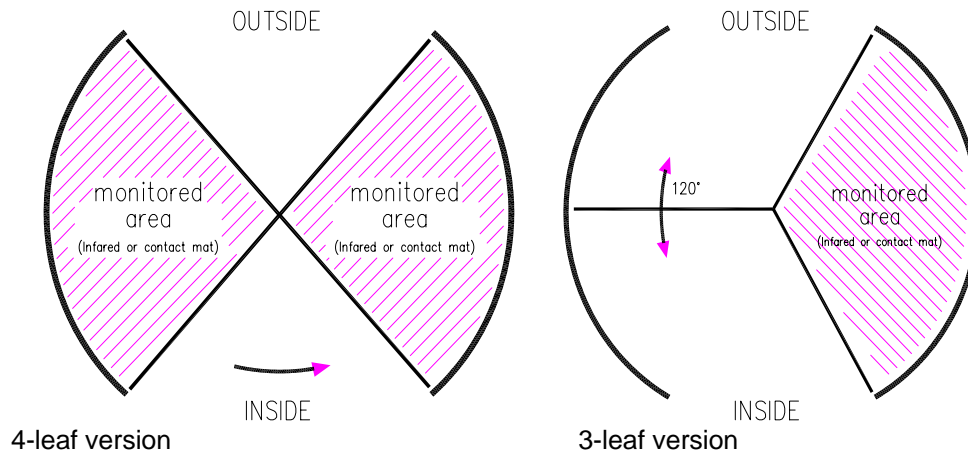
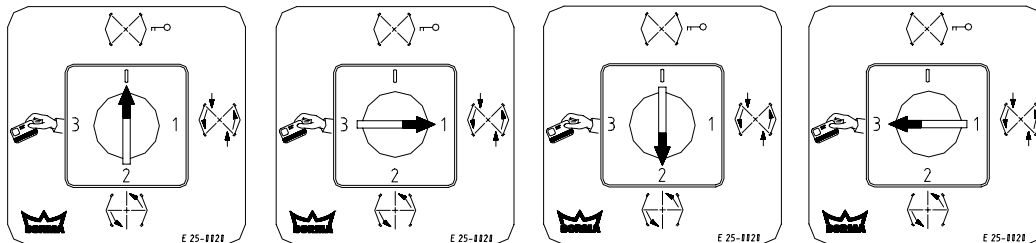


The KTV SECURE is available in 2 different versions:



Brief description:



Locking (OPTIONAL) Auto 1 (OPTIONAL) Auto 2 (OPTIONAL) Access control

KTV SECURE in 4-leaf version

Access Control Function via „Release 1“

If a release pulse is activated (e.g. card reader), the device rotates anti-clockwise in corresponding degree and stops in the next basic position until a new pulse is being activated.

This pulse can be activated via a potential-free contact (card reader, push button, movement sensor etc.).

A one-time release from “inside” can also be optionally used for persons to enter the device from inside the building. After the passage the device positions itself again and can be put into rotation manually from the basic position. Afterwards it positions itself again. If a person coming from the outside is detected in a chamber (here the left chamber) during the authorized passage from „inside“, the device reverses and returns to the next basic position.

Access control function via „Release 2“

In case a release pulse is received (e.g. card reader), the device rotates anti-clockwise in corresponding degree. Afterwards the device locks via shock-stop coupling, until a new pulse is being released.

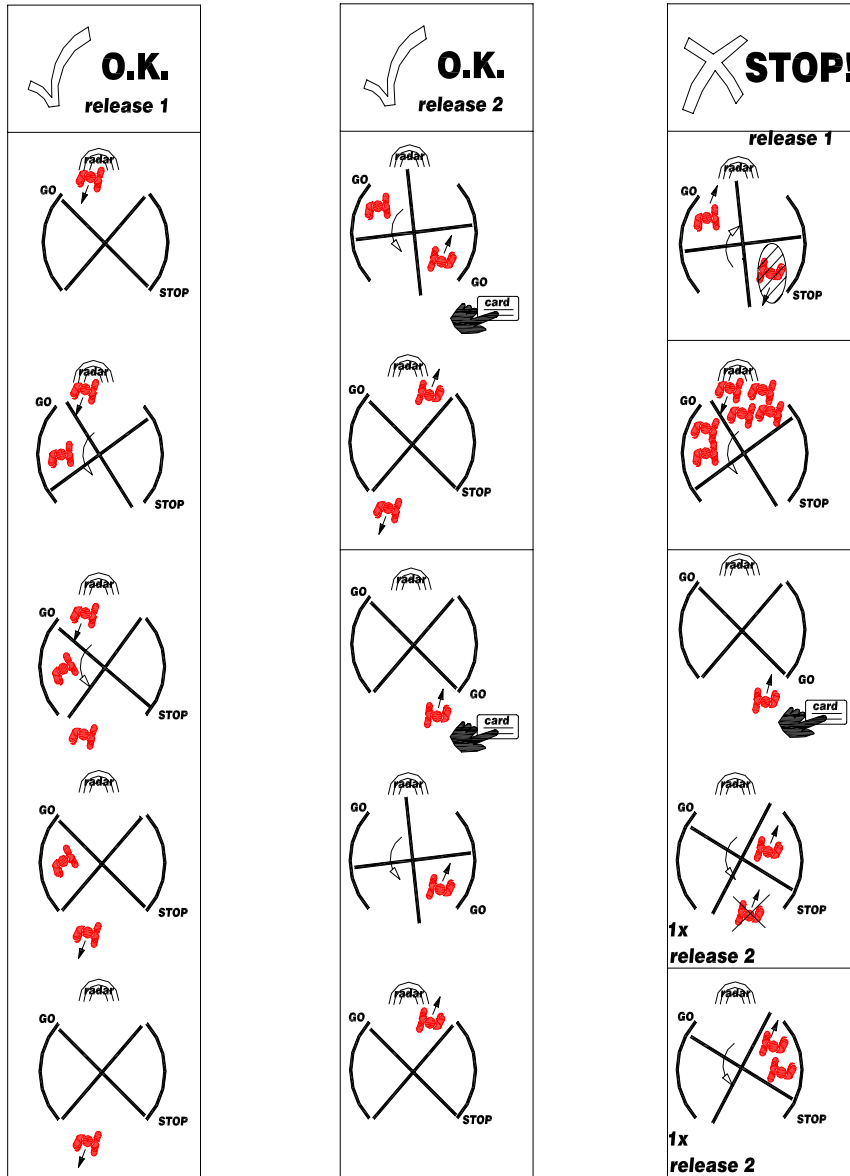
A person coming from the inside at the same time can leave the device.

If a couple of releases are successively given from the outside, the device saves the number of releases and allows persons to enter chamber after chamber.

Illegitimate access / chamber control

Persons who are trapped in a chamber or have illegitimately accessed the chamber are being recognized via door sensors. The device leads them outside again.

Access advices 4-leaf version:



KTV SECURE in 3-leaf version

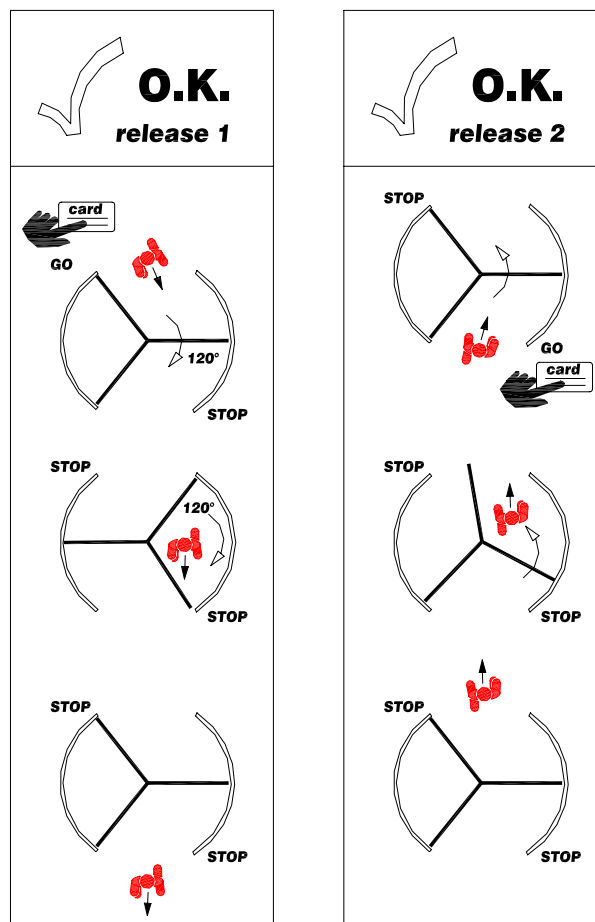
- The door system is in starting position (X-Position) and the electromagnetic coupling is activated.
- Access authorization via card reader.
- The control unit waits for X seconds ("holding time": if this adjustable period of time expires without the door being accessed, the procedure will be interrupted automatically) for the door to be moved manually out of its starting position. Then the door rotates via motor power until it reaches the next starting position where the user can get out of the system.
- The electromagnetic coupling is reactivated until the next activation of the system.

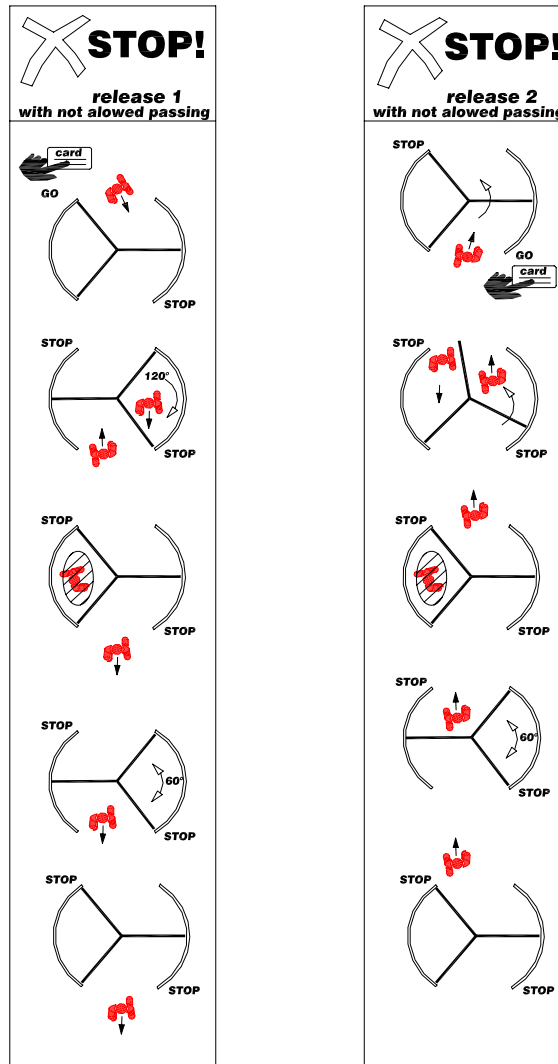
The door system responds differently to an activation via the "internal" and the "external" activation input by rotating in two different directions (clockwise/anticlockwise).

Illegitimate access / chamber control

With 3-wing systems, the door system "remembers" the previous rotation direction and reverses so that unauthorized users are compelled to leave the system where they originally entered it. For this purpose the system rotates to the next intermediate position*, locks and stops for a freely-adjustable period of time before it returns to its starting position.

Access advices 3-leaf version:





OPTIONS

Power failure:

In case the door device detects a power failure, the device locks in a basic position via the shock-stop coupling and electro-mechanically via bolt lock. The door returns to regular operation when the voltage returns.

Traffic lights:

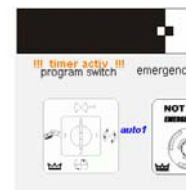
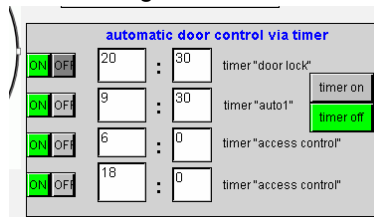
Green = ready for release pulse

Green flashing = entry free for passage

Red = no access

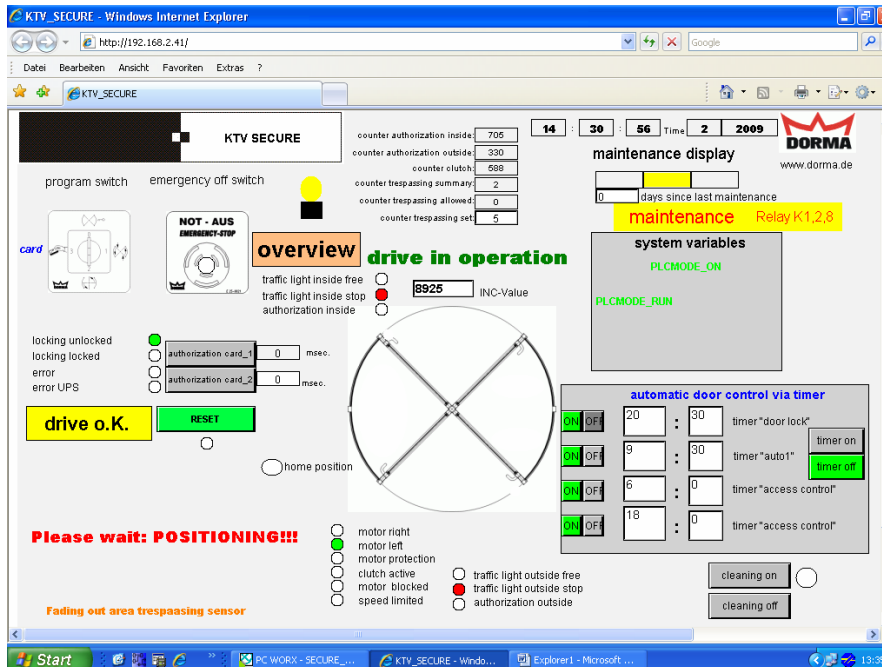
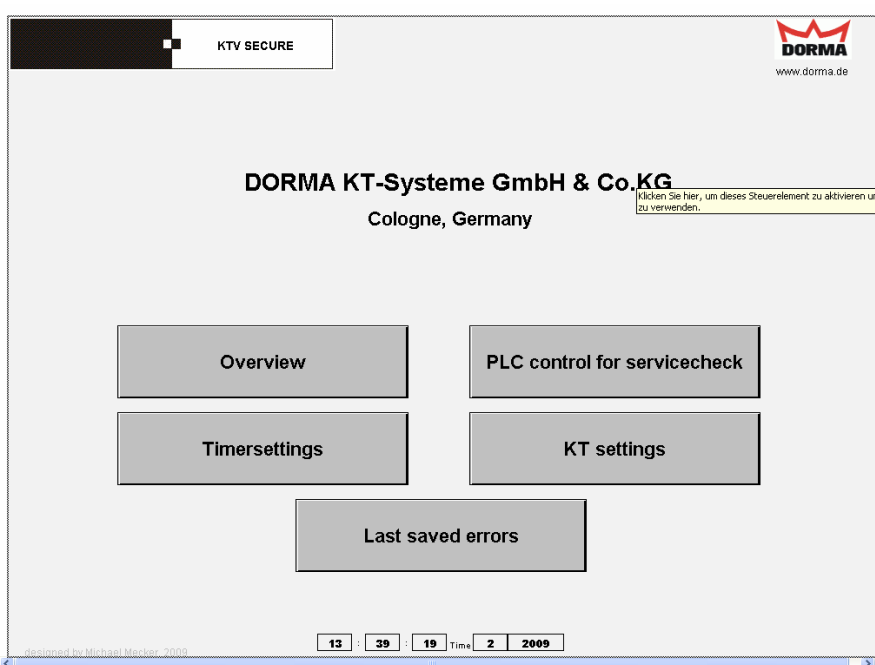
Both signals red = emergency-off, error drive, illegitimate access, blocking, power failure or the like

- Timer Function**
- Speed Control**
- Direction control**
- Electromechanical door lock and more**



LAN:

With this OPTION it is possible to connect the KTV SECURE with building management systems via Ethernet

**Advice:**

It cannot be avoided that 2 persons enter a chamber at the same time.

Inputs:

- release 1
- release 2
- emergency stop (inside)
- emergency stop (outside)
- cleaning (door free)
- door stop (shock stop)
- programm switch
- reset
- radar
- trespassing sensors

Outputs:

- alarm (antivalent potentialfree)
- door is waiting for release
- door is blocked via input "door stop"
- lightning
- LAN Ethernet (Option)

Technical data:

Power supply:	230 V/50-60 Hz
Fuse protection by others:	B16A
Power consumption:	approx. 130 W (without lights)
Lights:	by others
Motor:	DC-motor 60 V DC
Control circuit:	24 V DC/120 W, short-circuit proof
Approvals: (depending on system equipment)	Machinery Directive 98/37/EG with DIN 18650-1,-2: 2005; DIN EN954-1:1997 BGR 232:2003 (German guidelines for power-operated windows, doors and gates) Low Voltage Directive 73/23/EG with EN 60335-1:2005 in connection with DIN 18650:2005 German guidelines for automatic sliding doors in escape routes: 1997
Class of protection:	IP 54
Noise level:	<70dB(A)
Temperature range:	-20°C to +60°C
Air humidity:	dry

Subject to technical amendments.