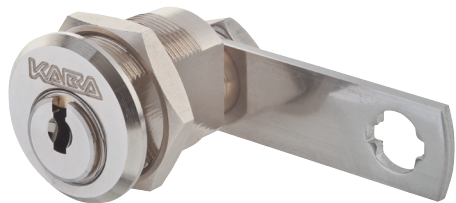


Camlock Cylinders

BMZ.1091



Application:

Lock cylinder with hex fastening nut, suitable for installation in wood and metal. The cam can be used in left and right hinged doors as well as in drawers.

(Standard configuration: closing path A, see "Cam Settings" page 160)

Key rotation 90° to the right

Key can only be removed when locked

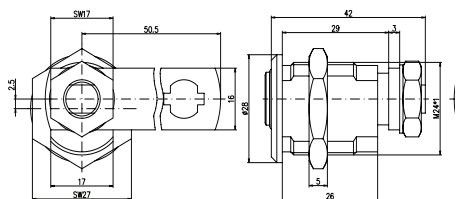
Specification:

Housing supplied in solid natural brass with nickel plating

Zinc-coated steel cam

Nickel-plated brass hex fastening nut

Reversible key made from nickel silver



Included with the cylinder:

2 reversible keys (See "Special Functions and Keys" for key options)

Plastic key clip in dark red for Kaba penta, in dark blue for all other systems

1 standard cam 210.201.701

1 fastening nut M 24 x 1 mm

Security Card for ownership registration and ordering duplicate keys

Installation and Maintenance Instructions

Premier Systems: 6 Kaba penta 7 Kaba quattro pluS 12 Kaba gemini pluS

Patent expired systems

4 Kaba quattro S

2 Kaba gemini S

Old systems

3 Kaba quattro¹⁾

1 Kaba gemini¹⁾

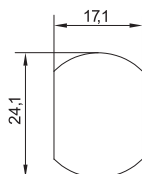
Dealer systems

5 Kaba experT²⁾

19 Kaba maTriX²⁾

Old dealer system

9 Kaba gemini T²⁾



Installation hole

Overall length 42mm

Closing paths: A, D, F, G for standard cam 210.201.701 (See page K.169)

A, D for all other cams

Options (See „Special Functions and Keys“ for details and further options)

BAZ	Construction key	BAZ3	Construction key 3		
2004	Dust and weather cap	2x180	2 key retraction points	H	Home mailbox cam
R1	Renz 1 mailbox cam	R2	Renz 2 mailbox cam	JU1	Junie 1 mailbox cam

Accessories		

Standard Surface Finishes (for lock cylinder)

NI - Nickel plated	MS - Brass natural	
--------------------	--------------------	--

Optional Surface Finishes

BH - brown light	MP - Brass polished	CR - Chrome standard
BM - brown medium	MSA - Brass antique	CRM - Chrom dull
BD - brown dark		CRP - Chrome polished
NIC - chemically nickel plated		
GO - gold plated		

Order Code System

System Code.Camlock.Type.Surface finish.Cam.Option

Example:

6.BMZ.1091.NI.ZK210.201.703 = penta.camlock.1091.nickel plated.cam to drawing number ZK210.201.703

Please note that certain options, finishes and dimensions may be subject to extended factory lead times. Please contact our office via email on sales.uk@kaba.com or telephone (0) 870 000 5625.

¹⁾ Kaba gemini and Kaba quattro are only offered for existing master key systems.

²⁾ Kaba experT, Kaba maTriX and Kaba gemini T are only sold to authorized dealers.