

# Camlock Cylinders

## BMZ.1090



### Application:

Camlock cylinder with hex fastening nut for control cabinets, lockers, mailboxes, key cabinets, etc.

Key rotation 90°, key can only be removed when locked

### Specification:

Housing supplied in solid natural brass with nickel plating

Zinc-coated steel cam

Nickel-plated brass hex fastening nut

Reversible key made from nickel silver

### Included with the cylinder:

2 reversible keys (See "Special Functions and Keys" for key options)

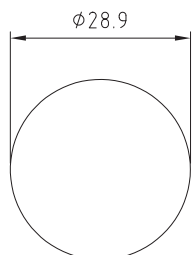
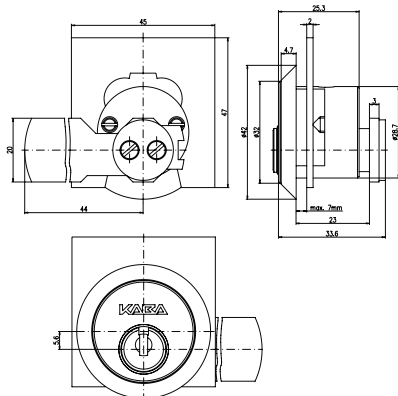
Plastic key clip in dark red for Kaba penta, in dark blue for all other systems

1 standard cam 210.210.701 (other configurations, see page K.164 and K.165)

1 support plate 210.210.703 (other configurations, see page K.166)

Security Card for ownership registration and ordering duplicate keys

Installation and Maintenance Instructions



Installation hole

<b>Premier Systems:</b>	<b>6</b> Kaba penta	<b>7</b> Kaba quattro pluS	<b>12</b> Kaba gemini pluS
Patent expired systems	<b>4</b> Kaba quattro S	<b>2</b> Kaba gemini S	
Old systems	<b>3</b> Kaba quattro <sup>1)</sup>	<b>1</b> Kaba gemini <sup>1)</sup>	
Dealer systems	<b>5</b> Kaba experT <sup>2)</sup>	<b>19</b> Kaba maTriX <sup>2)</sup>	
Old dealer system		<b>9</b> Kaba gemini T <sup>2)</sup>	

**Overall length** 33,6mm

**Closing paths:** A, B, C, D, E, F, G, H (See page K.169)

### Options (See „Special Functions and Keys“ for details and further options)

BAZ	Construction key	BAZ3	Construction key 3	2004	Dust and weather cap
H	Home mailbox cam	SK	Key cabinet cam	R1	Renz I mailbox cam
JU1	Junie mailbox cam	2x180	Two key retractions	R2	Renz II mailbox cam

<b>Accessories</b>		

### Standard Surface Finishes (for lock cylinder)

NI - Nickel plated	MS - Brass natural	
--------------------	--------------------	--

### Optional Surface Finishes

BH - brown light	MP - Brass polished	CR - Chrome standard
BM - brown medium	MSA - Brass antique	CRM - Chrom dull
BD - brown dark		CRP - Chrome polished
NIC - chemically nickel plated		
GO - gold plated		

### Order Code System

System Code.Camlock.Type.Surface finish.Cam.Option

Example:

6.BMZ.1090.NI.ZK210.027.701 = penta.camlock.1090.nickel plated.cam to drawing number ZK210.027.701

Please note that certain options, finishes and dimensions may be subject to extended factory lead times. Please contact our office via email on sales.uk@kaba.com or telephone (0) 870 000 5625.

<sup>1)</sup> Kaba gemini and Kaba quattro are only offered for existing master key systems.

<sup>2)</sup> Kaba experT, Kaba maTriX and Kaba gemini T are only sold to authorized dealers.