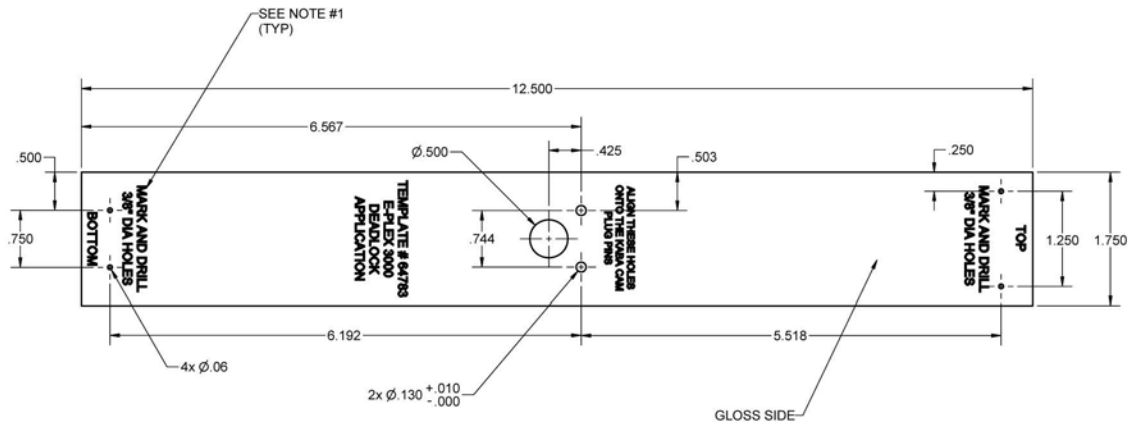


REVISION HISTORY				
ECN	REV	DESCRIPTION	DATE	APPROVED
07181	A	RELEASED FOR PRODUCTION	10/26/2007	kpack
07203	B	DEADLOCK WAS DEADLATCH	12/12/2007	kpack



NOTES:

- 1) UNLESS OTHERWISE SPECIFIED, 1/8" LETTERS ARE TO BE POSITIONED AS SHOWN.
- 2) USE HELVETICA LETTERING.
- 3) TEMPLATE MATERIAL / LETTERING SIMILAR TO P/N 64143.

REFERENCE ONLY, NOT TO SCALE
Do not use as a drilling template.
Call 800-849-8324

PROPRIETARY RIGHTS OF KABA I LCO CORP. are involved in the subject matter of this material and all manufacturing, reproduction, use and sales rights pertaining to such subject matter are expressly reserved. It is submitted in confidence for a specified purpose, and the recipient by accepting this material agrees that this material will not be used, copied or reproduced in whole or in part nor its contents revealed in any manner to any person except to meet the purpose for which it was delivered.

ALL DIMENSIONS ARE IN INCHES
UNLESS OTHERWISE SPECIFIED.

UNLESS OTHERWISE SPECIFIED
TOLERANCES ARE:

FRACTIONS: $\pm 1/64$
 DECIMAL: $XX \pm 01$
 DECIMAL: $XXX \pm 005$
 ANGLES: $\pm 1/2'$

MATERIAL:
120 POINT CAROLINA COVER
COATED ONE SIDE - WHITE

HEAT TREAT

FINISH



THIRD ANGLE PROJECTION

DRAWN BY: kpack	DATE: 26 Oct 07
CHECKED BY:	DATE:
APPROVED BY:	DATE:

KABA

KABA I LCO CORP.
2941 Indiana Ave.
Winston-Salem, NC 27105

DRAWING TITLE: TEMPLATE, DEADLOCK

SIZE: B	DRAWING NO. 64783	REV B
SCALE: 1:1	FILE: 64783_B.kdw	SHEET 1 OF 1