



82132 Combi B 30

Electronic combination lock with deadbolt and mechanic redundancy. Especially suitable for class CEN III-V safes.

The Combi B 30 is the follower of the popular Code Combi B. Apart from a complete reworked and user friendly input unit design the lock provides a significant increased range of functions.

The integrated mechanic redundancy offers maximum reliability: by removing the rotary handle the hidden keyhole can be exposed and the lock can be opened with the double bitted key.

Furthermore a PC software is available, to read the Audit from the lock, respectively to execute easily all programming steps of the lock.

Basic Features

Lock
Order code

Combi B 30 - standard
82132/3xxx

Approvals/Certificates

EN 1300, VdS class 2, VdS approval numbers:
lock system M102323, bolt switch G113062

Codes

- 8 digits (ID + 6 digits)
- 1 Master code
- 30 User codes
- 1 Courier code

Code functions

- Dual mode
- Duress code (silent alarm) (+1/-1)
- Wrong try lock out 1, 2, 4, 8, max. 16 minutes

Time functions

- Time delay: 0-99 minutes
- Opening window: 1-19 minutes

Outputs

- Bolt switch, VdS approval no. G113062
- Silent alarm (only in combination with the alarmbox)

Input

- Remote disabling
 - Time delay override
 - Dual Mode override
 - Duress by omission
- (only one of the mentioned functions selectable, for a VdS compliant application the Alarmbox must be used)

General functions

- Audit > 200 entries
- Power supply monitoring
- Acoustic and optical user support
- Manipulation signal

Lock

- Lock case and bolt die cast
- Electromagnetic bolt release
- Bolt with 2 threads M4, throw 12 mm
- Mechanic redundancy by lever system:
11 levers, double-bitted key retained when in open position
- Weight approx. 1.450 g (incl. input unit)

Admissible mounting positions

- Key and handle opening clockwise



Input unit

- Die cast chrome plated, silicone key pad with red and green LED and buzzer
- Connection cable with plug 400 mm

Admissible mounting positions

Key pad right, above, left and below (turnable key pad unit); standard delivery key pad right, turn knob left



Power supply

2 x AAA / LR03 1,5 Volt batteries (not included in delivery scope; high quality alkaline brand batteries recommended)

82132 Combi B 30



- Input unit with boltwork handle horizontal
- Input unit with boltwork handle vertical

Square Spindle, Accessories, Options & Keys

Square spindle input unit/lock

Square spindle length [mm]	Max. useable length [mm]
135	90,7
175	130,7
190	145,7
235	190,7

Option code

BEW135
BEW175
BEW190
BEW235

Accessories

- Alarmbox, VdS approval numbers:
Remote disabling G113064, silent alarm G113065 and bolt switch G113066
- Programmingsoftware Set (PC-Stick, USB-extension cable, Software CD, Dongle)
- Auditsoftware Set (PC-Stick, USB-extension cable, Software CD)
- Power supply unit 9V with plug for lock
- Power supply unit 12V for Alarmbox (lock powering by Alarmbox)
- Boltwork handle chrome plated with bearing bush and rosette chrome plated
- Boltwork handle chrome plated with bearing bush without rosette
- Cylinder head screw, galvanised, DIN 84 - BSW ¼" x 29 mm - 4.8, with lamellar disc, for lock fixing
- Cylinder head screw, galvanised, DIN 84 - M6 x 29 mm - 4.8, with lamellar disc, for lock fixing
- 1,5 Volt AAA/LR03 alkaline battery

Order number

82132Z0003
82132Z0001
82132Z0007
3 002 501 220
3 002 501 230
90050/0002
90050/0001

3 118 000 030

3 118 000 031
0 516 000 010

Options

- User-specific label rotary handle (on request)
- Painted surface (on request)

LFK
OLA

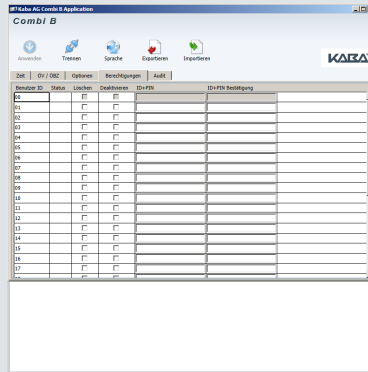
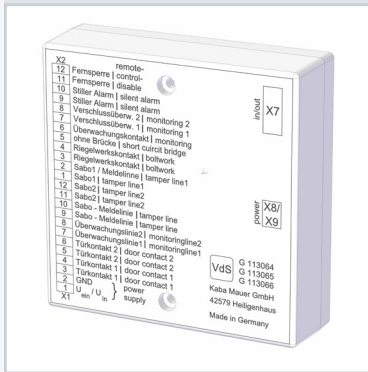
Keys

Material	Length, Ø stem	Key bow [mm]	Max. useable length [mm]
Die cast	120, Ø 6/7	Mauer	065
Die cast	150, Ø 6/7	Mauer	095
Die cast	164, Ø 6/7	Mauer	109
High strength brass	150, Ø 6/7	Oval	095
High strength brass	160, Ø 6/7	Oval	105
High strength brass	190, Ø 6/7	Oval	135
Special lengths on request			

Option code

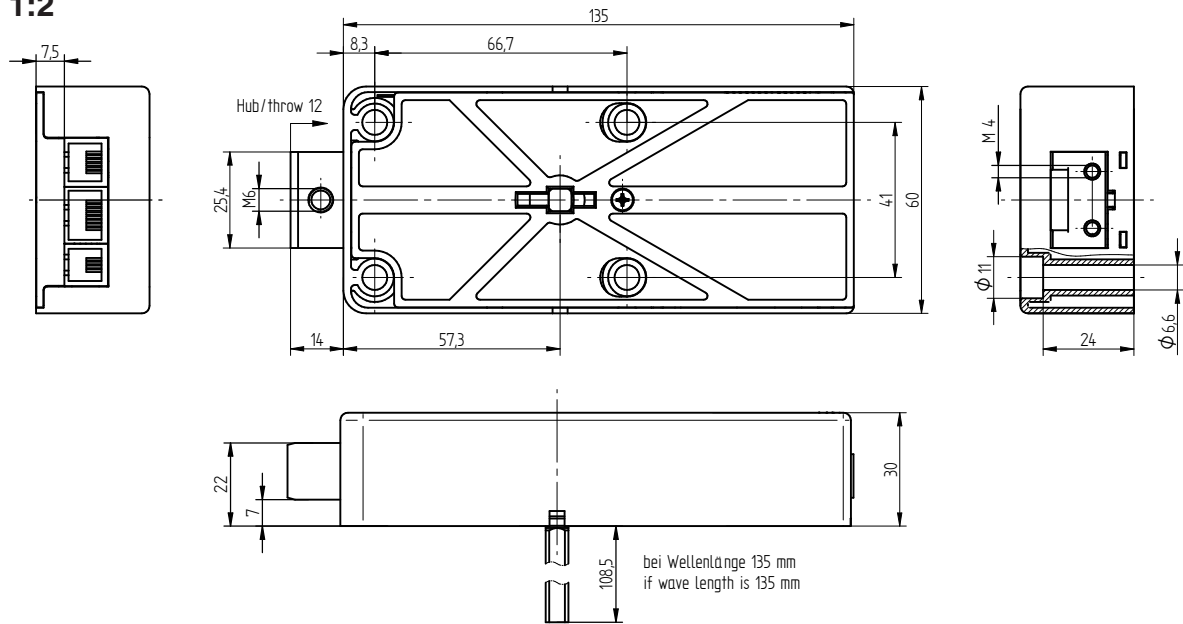
DSD120
DSD150
DSD164
DSS150
DSS160
DSS190

82132 Combi B 30

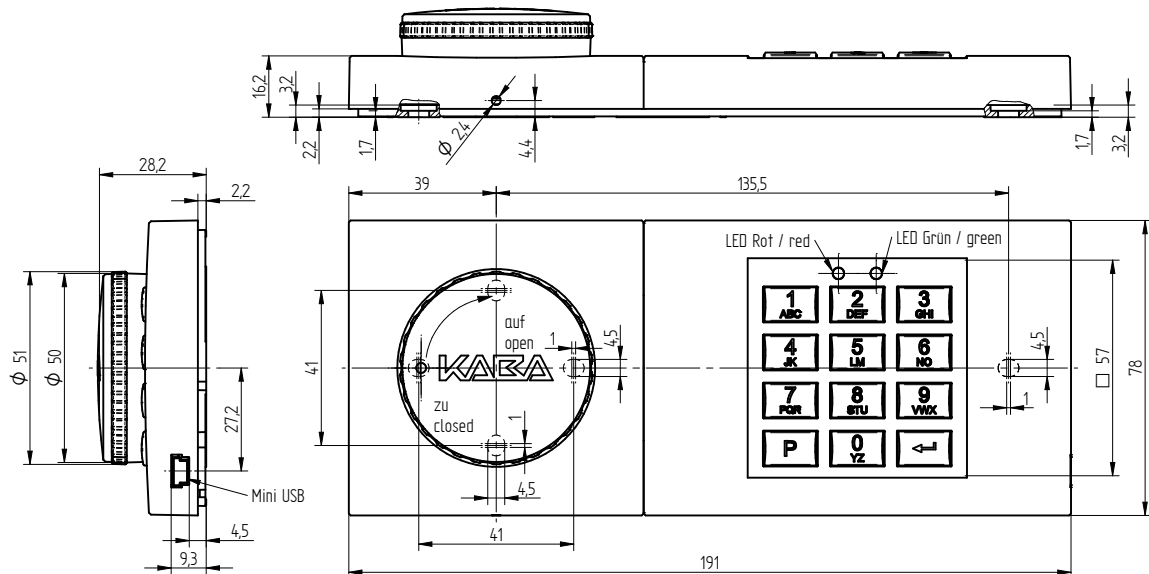


- Alarmbox
- PC Software

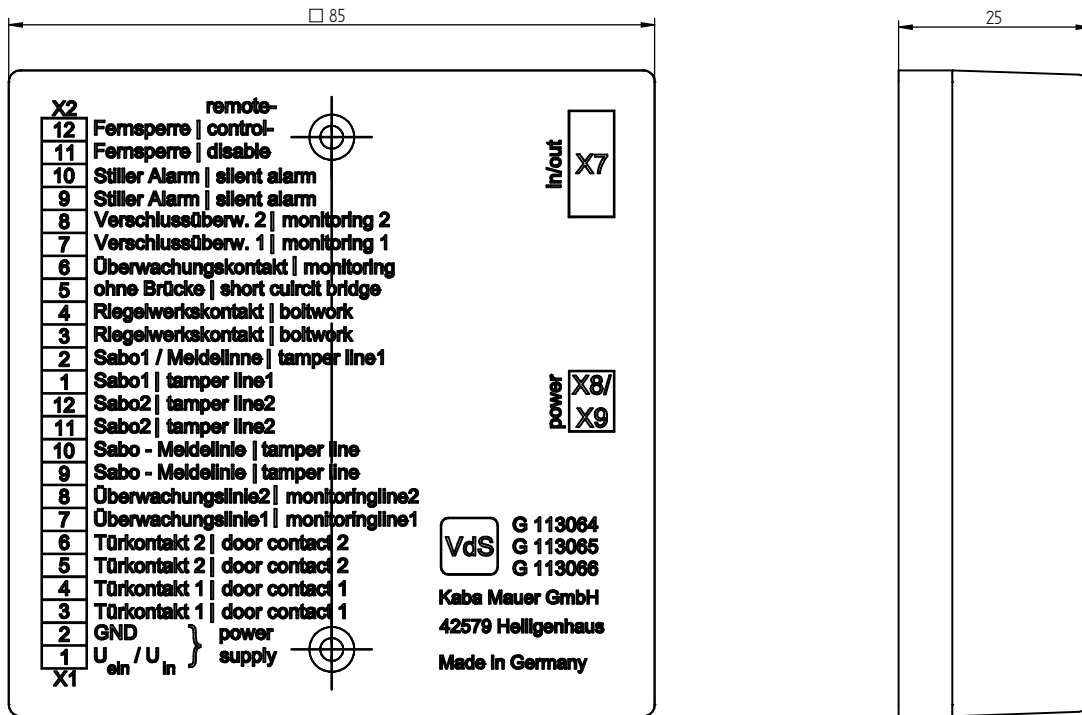
M 1:2



M 1:2



M 1:1



M 1:2

