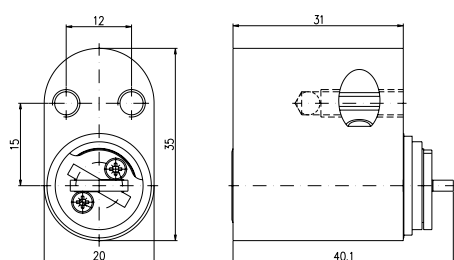


Cylinder in Scandinavian Oval Profile

OZ.2048



Outside cylinder types OZ.2048 and OZ.2048D



Application:

For use in Scandinavian type mortise locks.

Specification:

Housing supplied in solid natural brass with nickel plating
 Reversible key made from nickel silver
 Bored for cylinder fastening screw
 "SCAND" version: Insert and sleeve for all cylinder surfaces finishes in brass, natural
 Optional drilling protection type OZ.2048D
 Inside cylinder type OZ.2048F

Included with the cylinder:

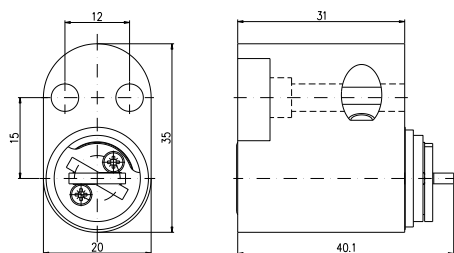
2 reversible keys (Specify separately, see "Special Functions and Keys" for options)
 Plastic key clip in dark red for Kaba penta, in dark blue for all other systems
 1 cylinder fastening screw M5 x 65 mm
 Security Card for ownership registration and ordering duplicate keys
 Installation and Maintenance Instructions

Premier Systems: 6 Kaba penta 7 Kaba quattro pluS 12 Kaba gemini pluS
 Patent expired systems 4 Kaba quattro S 2 Kaba gemini S
 Old systems 3 Kaba quattro¹⁾ 1 Kaba gemini¹⁾
 Dealer systems 5 Kaba experT²⁾ 19 Kaba maTriX²⁾
 Old dealer system 9 Kaba gemini T²⁾

Length 40.1 mm



Inside cylinder types OZ.2048F



Options (See „Special Functions and Keys“ for details and further options)

OZ.2048	Outside oval cylinder	OZ.2048D	Outside oval cylinder with drilling protection		
OZ.2048F	Inside oval cylinder				
BAZ	Construction key				

Standard Surface Finishes

NI - Nickel plated	MS - Brass natural	
--------------------	--------------------	--

Optional Surface Finishes

BH - brown light	MP - Brass polished	CR - Chrome standard
BM - brown medium	MSA - Brass antique	CRM - Chrom dull
BD - brown dark		CRP - Chrome polished
NIC - chemically nickel plated		
GO - gold plated		

Order Code System

System Code.Cylinder Type.Surface finish.Option

Example: 5.OZ.2048.NI.SCAND = experT.oval cylinder.nickel plated.brass insert

Please note that certain options, finishes and dimensions may be subject to extended factory lead times. Please contact our office via email on sales.uk@kaba.com or telephone (0) 870 000 5625.

¹⁾ Kaba gemini and Kaba quattro are only offered for existing master key systems.

²⁾ Kaba experT, Kaba maTriX and Kaba gemini T are only sold to authorized dealers.