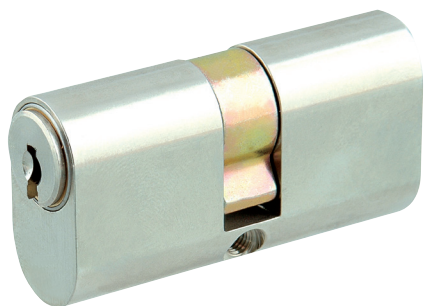


Double Cylinder, Union Profile DZUN



Application:

For all mortise door locks in Union (UK) oval profile. The cam operated the bolt and latch in door locks with key latch operation.

Specification:

Housing supplied in solid natural brass with nickel plating

Reversible key made from nickel silver

Emergency key function

(Please order emergency key separately, see chapter "Special Functions and keys").

Included with the cylinder:

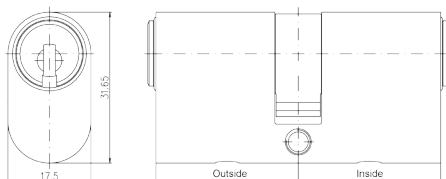
2 reversible keys (Specify separately, see "Special Functions and Keys" for options)

Plastic key clip in dark red for Kaba penta, in dark blue for all other systems

1 cylinder fastening screw M5 x 65 mm

Security Card for ownership registration and ordering duplicate keys

Installation and Maintenance Instructions



Premier Systems: 6 Kaba penta 7 Kaba quattro pluS 12 Kaba gemini pluS

Patent expired systems

4 Kaba quattro S

2 Kaba gemini S

Old systems

3 Kaba quattro¹⁾

1 Kaba gemini¹⁾

Dealer systems

5 Kaba experT²⁾

19 Kaba maTrix²⁾

Old dealer system

9 Kaba gemini T²⁾

Lengths Standard - each side from 30 to 100 mm in 5 mm steps

Special over 100 mm

Options (See „Special Functions and Keys“ for details)

DF	Duplo function	PF	Priority function	BSZ	Both side override
BAZ	Construction key	BAZ3	Construction key 3	GF	Emergency key
FL360	Freewheel cam		Special Cams	KT	Electrical contact
FZG	Freewheel cam for gear operated (panic) locks			BL	Blind on one side
RB	Relative cam movement			SSW	Weather protection
DIN.ZS	DIN18252 certified: pulling protection			DIN	Drilling protection
VDSB.ZS	VdS certified : Pulling and drilling protection			VDSB	Pulling protection
LAM	Pulling protection with steel shims in housing			ST	Steel housing

Standard Surface Finishes

NI - Nickel plated	MS - Brass natural	
--------------------	--------------------	--

Optional Surface Finishes

BH - brown light	MP - Brass polished	CR - Chrome standard
BM - brown medium	MSA - Brass antique	CRM - Chrom dull
BD - brown dark		CRP- Chrome polished
NIC - chemically nickel plated		
GO - gold plated		

Order Code System

System Code.Cylinder Type.Length(function)+Length(function).Surface finish.Option

Example:

6.DZUN.30+40.NI = penta.double cylinder union profile.30+40.nickel plated

¹⁾ Kaba gemini and Kaba quattro are only offered for existing master key systems.

²⁾ Kaba experT, Kaba maTrix and Kaba gemini T are only sold to authorized dealers.

Please note that certain options, finishes and dimensions may be subject to extended factory lead times. Please contact our office via email on sales.uk@kaba.com or telephone (0) 870 000 5625.